

3576

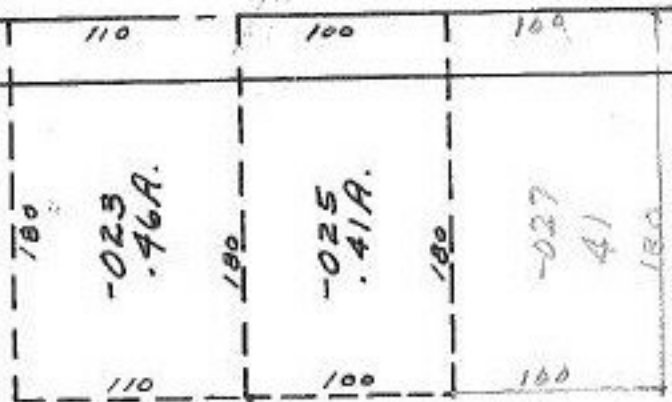
57

ELYRIA - MEDINA

79°14'

100°46'

233.76



-028
-026
8.93A.
8.52A.

510.50

90°

3576 P.L.C.
S.P.

APPROVED
LORAIN CO.
MAP DEPT.
DATE 3/3/70
11-00-100-B
BY
R.J. Kelling

-021
5.94 A.

JUN 5 ENT'D

R.J. Kelling