

24

PT 3360

1.00A

6.48

6.48  
8078

375

934.80

Pt. -018  
Pt. 3.28 A.

1 .08  
-001 60

2 150  
-002 "

934.47

3 -003 "

1251.46

101

Pt. -019  
Pt 1.77A

934.23

4 -004 "

5 173  
-027 "

Pt. -020  
Pt. 4.67A.

6 -027 "

7 173

8 700 - 7

9 800 - 8

10 600 - 6

11 150  
89.52

12 -025 10

13 324.27

14 -026

15

16

153.15

80 5.0

266.45

866.5

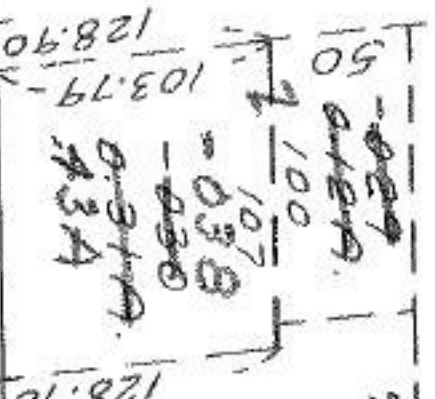
107

78

65

160.2

RE



475.44

50

100

100

100

100

100

100

100

100

100

100

100

100

100

3360-026  
1.00A.

437.90

1.00A.

0.50A.

437.90

93.20

160.68

128.70

130

315

24.65

100

53.24

46.54

435.65

1.00A.

437.90

1.00A.

1.00A.

1.00A.

1.00A.

1.00A.

1.00A.

1.00A.

1.00A.

1.00A.

SEE 6-25

