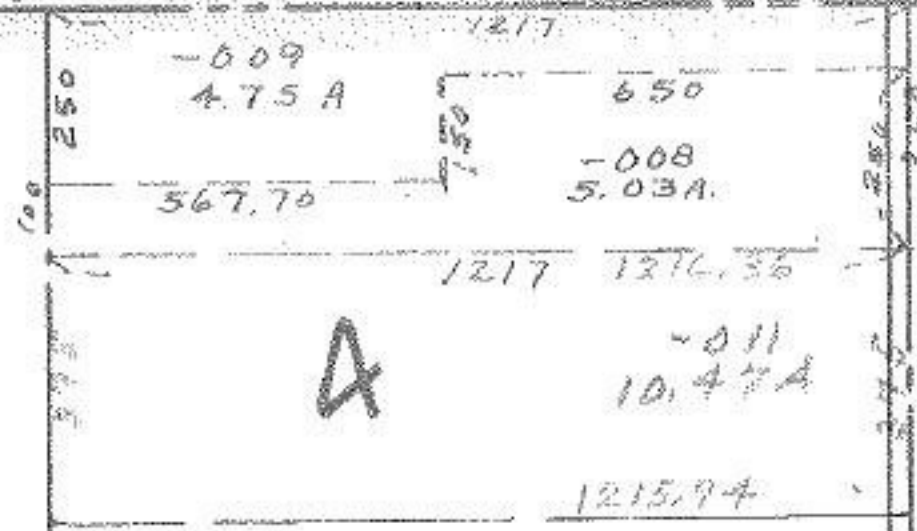


2389.20

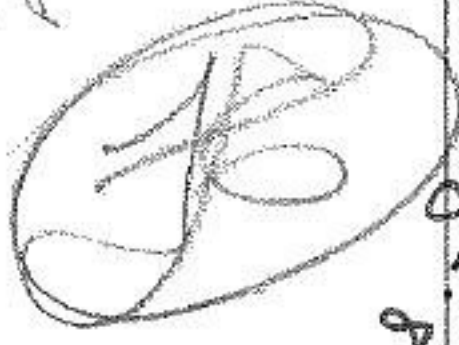
3327



JAN 6 1969

Pt. -012  
86.40

Pt. 86.40 A  
75.71



APPROVED  
LORAIN CO.

MAP DEPT.

DATE 12/2/69

Pg 19-B

BY  
B. V. Kelling

9.9.31

-001  
120.00 A.

T

2

C

SEE 19-04-001-B

LATTASBURG - ELYRIA

3327

(60)