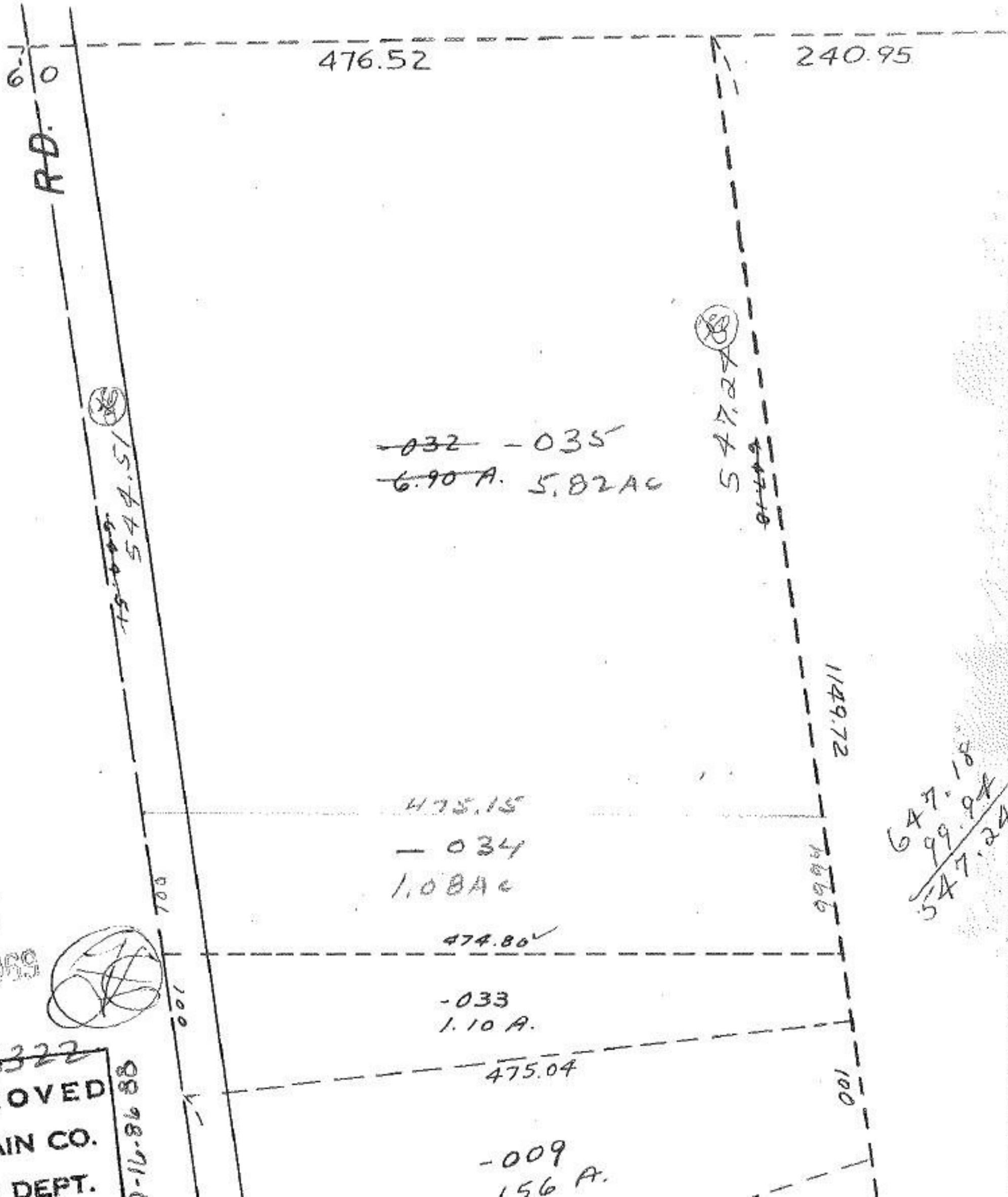


# 3322



476.52

240.95

6.0

R.D.



547.51

75-0-0-9

~~-032~~ -035  
~~6.90 A.~~ 5.82 AC



547.24

~~647.18~~

1149.72

475.15

-034  
1.08 AC

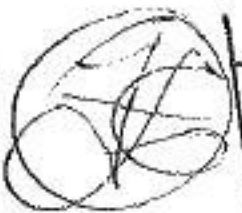
1986.6

647.18  
+ 99.94  
-----  
547.24

474.80

-033  
1.10 A.

DEC 5 1959



#3322  
APPROVED  
LORAIN CO.  
MAP DEPT.

88-16-86-88

475.04

-009  
1.56 A.

100