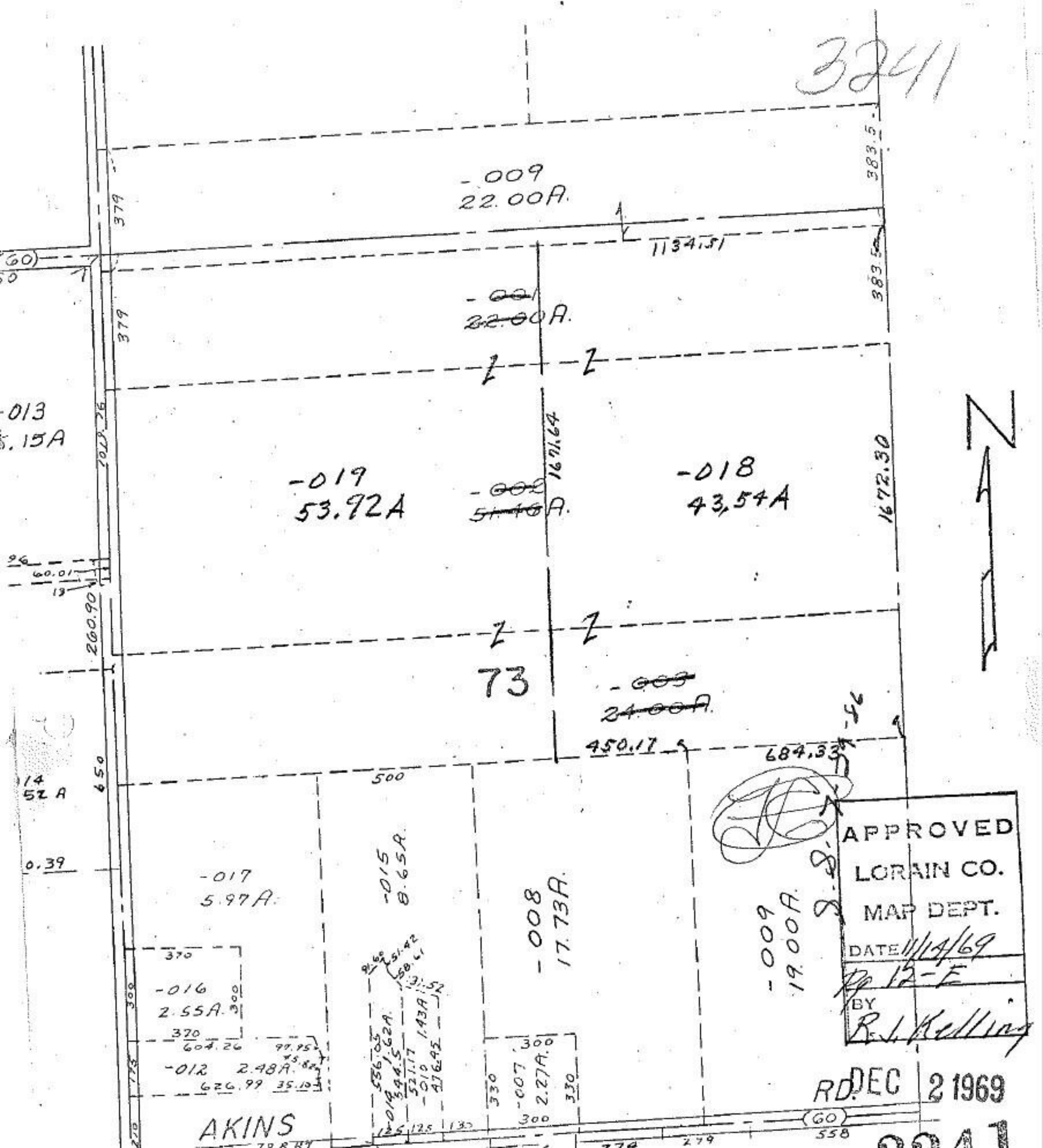


32411



-009
22.00A.

~~-001~~
~~22.00A.~~

-019
53.92A

~~-002~~
~~51.48A.~~

-018
43.54A

73

~~-003~~
~~24.00A.~~

-017
5.97A.

-015
8.65A.

-008
17.73A.

-016
2.55A.

~~-019~~ 536.05
~~-018~~ 394.562A
~~-010~~ 521.17
~~-012~~ 1.43A
~~-011~~ 476.92

-012 2.48A.

-007 2.27A.0

-009
19.00A.

APPROVED
LORAIN CO.
MAP DEPT.

DATE 11/14/69

BY R. J. Kelling

RD. DEC 2 1969

AKINS

