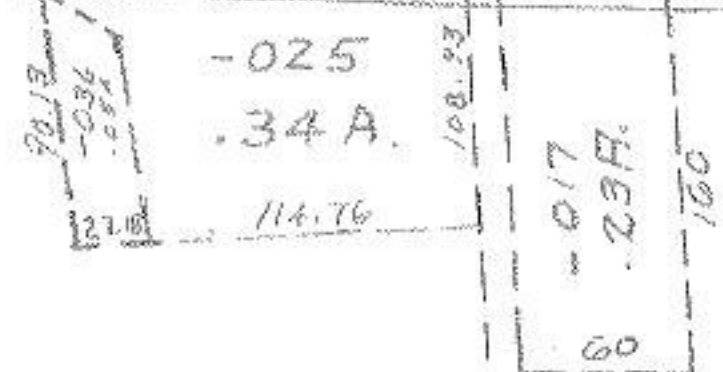


392.69 SUGAR RIDGE 628.66 150 60 100 3229 129.52



-045
4.35 A

317.83



APPROVED
LORAIN CO.
MAP DEPT.
DATE 11/10/69
BY R. J. Kelling

-044
~~-044~~
7.84 A
3.51

Pt. - 010
Pt. 13.32 F.

DEC 2 1969

3229

EDY