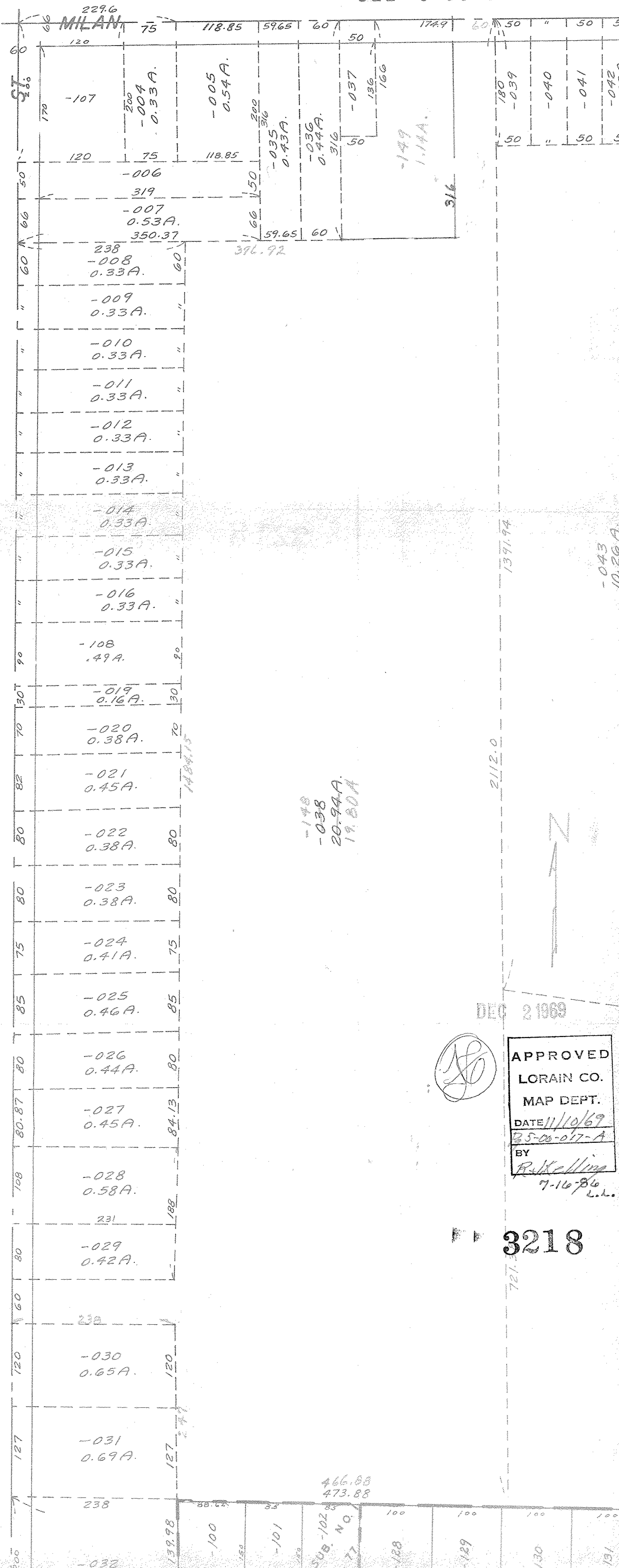


SEE 5-00-004-B



DEC 2 1969



APPROVED
 LORAIN CO.
 MAP DEPT.
 DATE 11/10/69
 25-00-017-A
 BY
 R. Kelling
 7-16-86
 L.L.

3218

-148
 -038
 20.94A.
 19.80A

-043
 10.26A

466.88
 473.88

SUB-102
 6.77