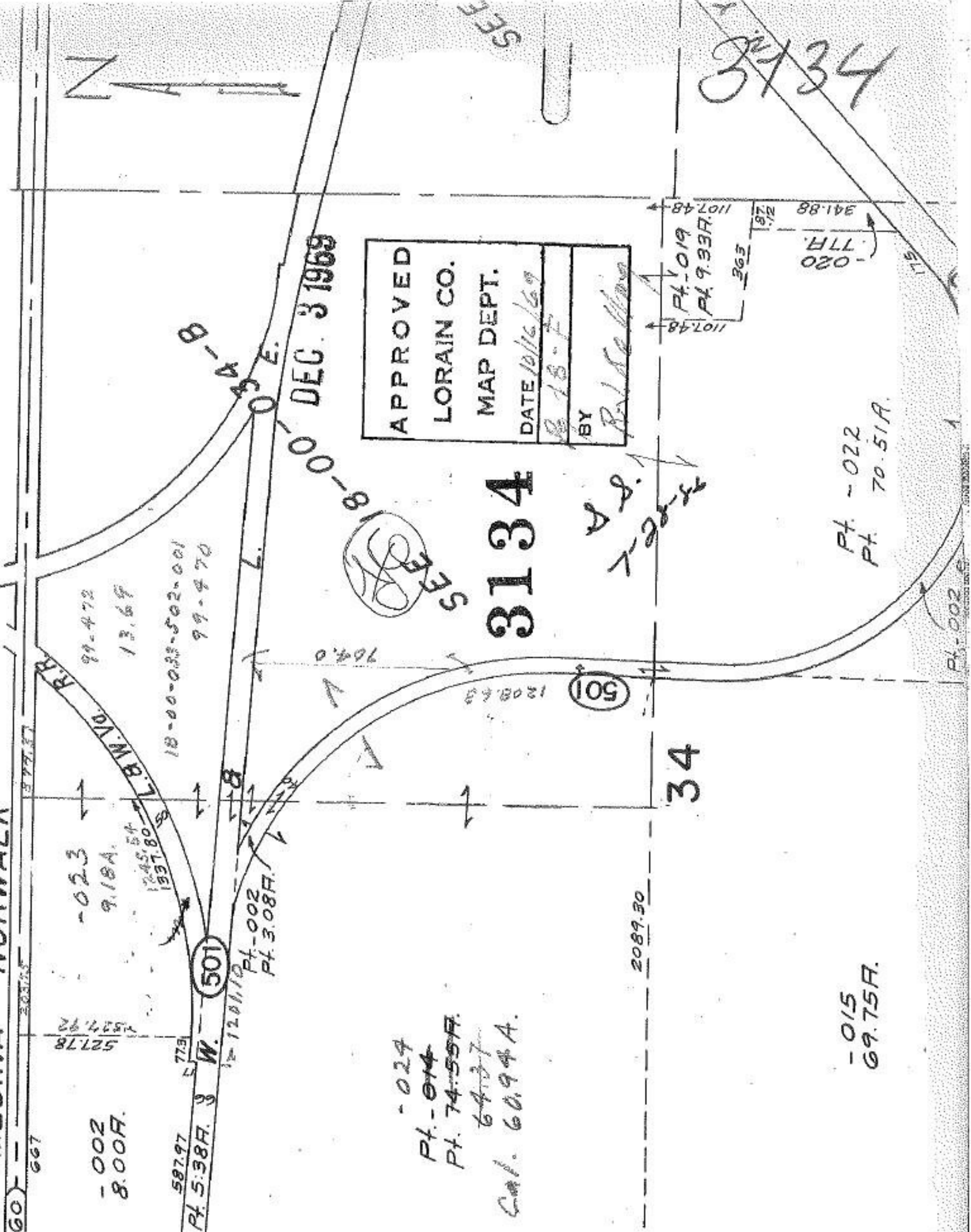


SEE 18-B

MEDINA NORWALK



527.78
1527.92

-023
9.18A.

99.472
13.69

18-00-033-502-001
99-470

12.45.54
1337.80

587.97
Pt. 5.38A.

573
W. 501

12-120110
Pt. 3.08A.

DEC. 3 1969

SEE 18-B

APPROVED
LORAIN CO.
MAP DEPT.
DATE 10/16/69
BY [Signature]

3134

501

2089.30

34

1107.48
Pt. 0.19
Pt. 9.33A.
363
1107.48

341.88
-020
-77A.

-015
69.75A.

Pt. -022
Pt. 70.51A.

A.S.
2-22-69

3434

SEE 18-B

-024
Pt. -014
Pt. 74.55A.
64.37
Cal. 60.94A.

Pt. -002