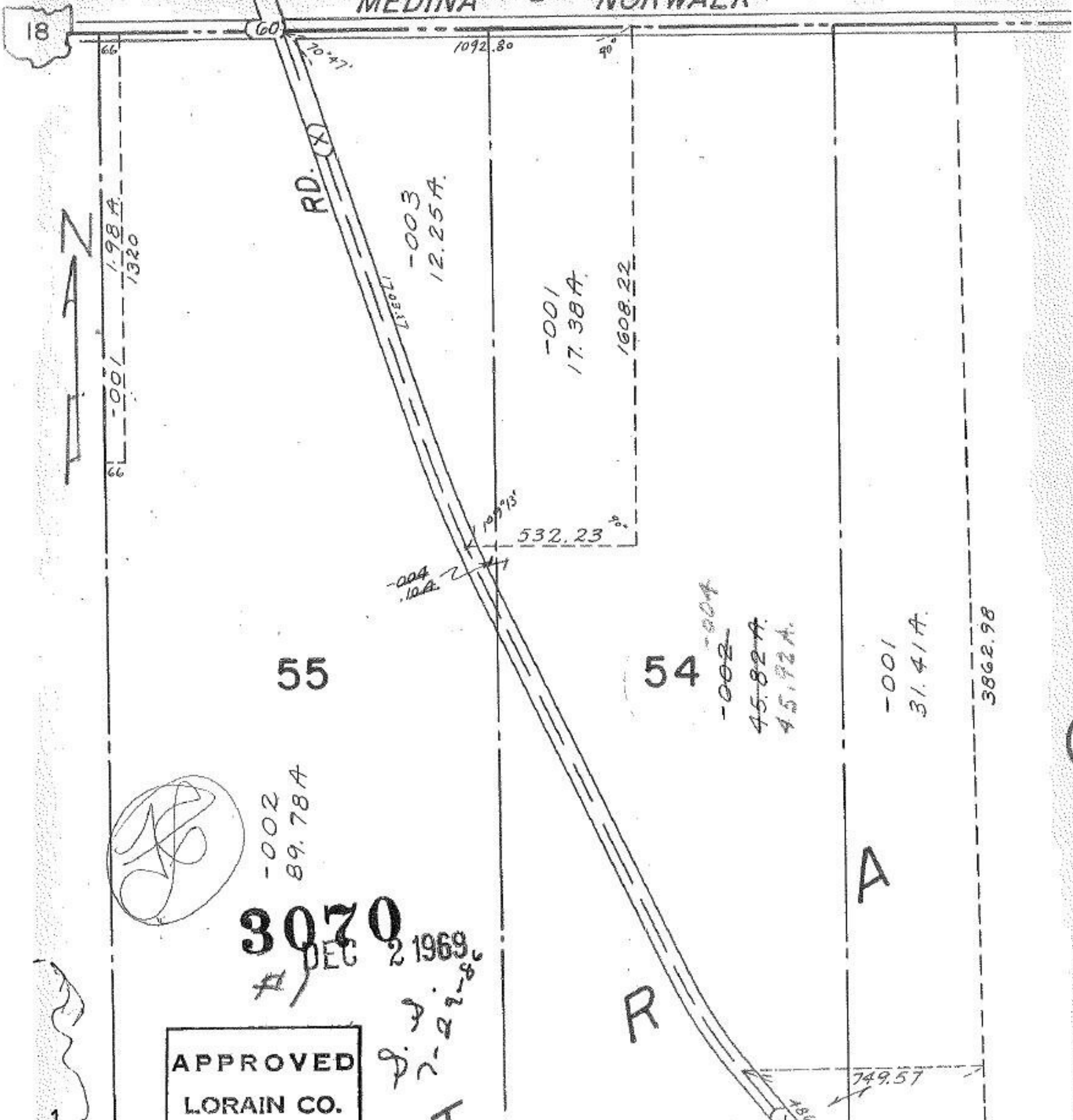


MEDINA - NORWALK

3070



18

55

54

A

R

APPROVED
LORAIN CO.

3070
DEC 2 1969
D. J. 2-22-86

-002
89.78 A

-002
45.82 A.
45.92 A.

-001
31.41 A.

3862.98

-003
12.25 A.

-001
17.38 A.
1608.22

532.23

1.98 A.
1320

-001

1092.80

90°

70° 47'

105° 13'

-004
10 A.

749.57

486°