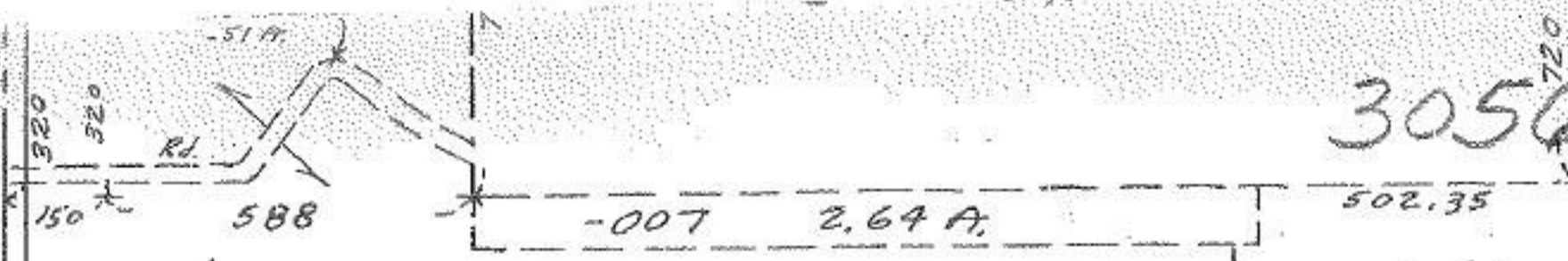
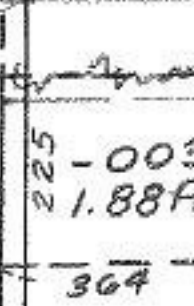
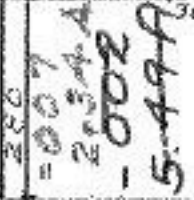
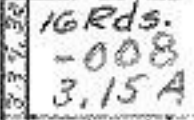
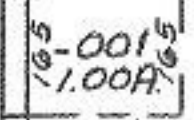


3056



Pt. - 004  
Pt. 101.96 A.

940



- 004  
67.63 A.



- 00  
15.0

22

3056

APPROVED  
LORAIN CO.  
MAP DEPT.

DATE 9/22/69

15-A

- 005  
74.50 A.

129.  
.69

- 003  
4.50 A.

OCT 8 1969

1340  
150  
320  
320  
51 ft  
588  
-007  
2.64 A.  
502.35  
720  
1340  
240  
240  
132 A.  
240  
240  
364  
165  
165  
1.00 A.  
165  
165  
364  
16 Rds.  
1008  
3.15 A.  
165  
165  
364  
250  
250  
2.34 A.  
5.49 A.  
250  
250  
364  
225  
225  
1.88 A.  
225  
225  
364  
300  
15 A.  
6