

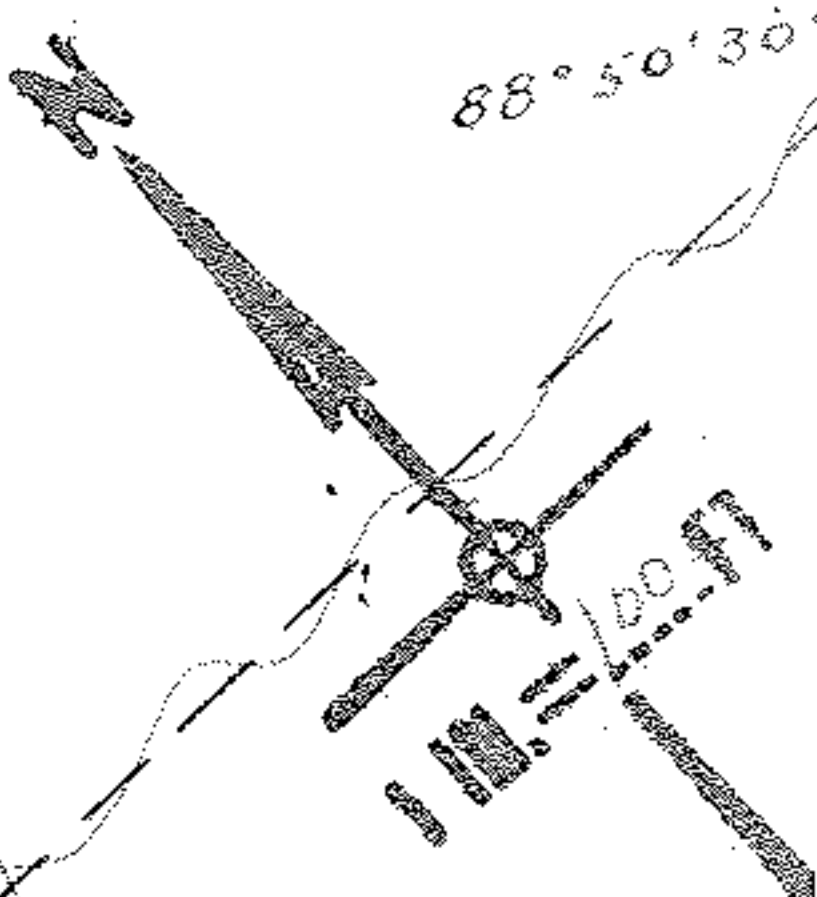
SEE 9-00-090-B

3041

3041

APPROVED  
LORAIN CO.  
MAP DEPT.  
DATE 9/16/67  
BY [Signature]

S.S. 7-03-58



Pt. 09-00-089-000  
- 025  
Pt. 3.86A.

420.24  
- 054  
44A.  
393.84  
63+78 393 84

- 056  
80A.  
238.08  
237.48

63°07'  
165.22

420.61

- 025  
775A.

99

- 026  
9.11A.

233.02 to  
50°05'30"

- 072  
7.33A.

- 020  
12.52A.

- 073  
12.94A.

88°50'30"

1 IN. = 100 FT.