

3023

3023
78-32-88

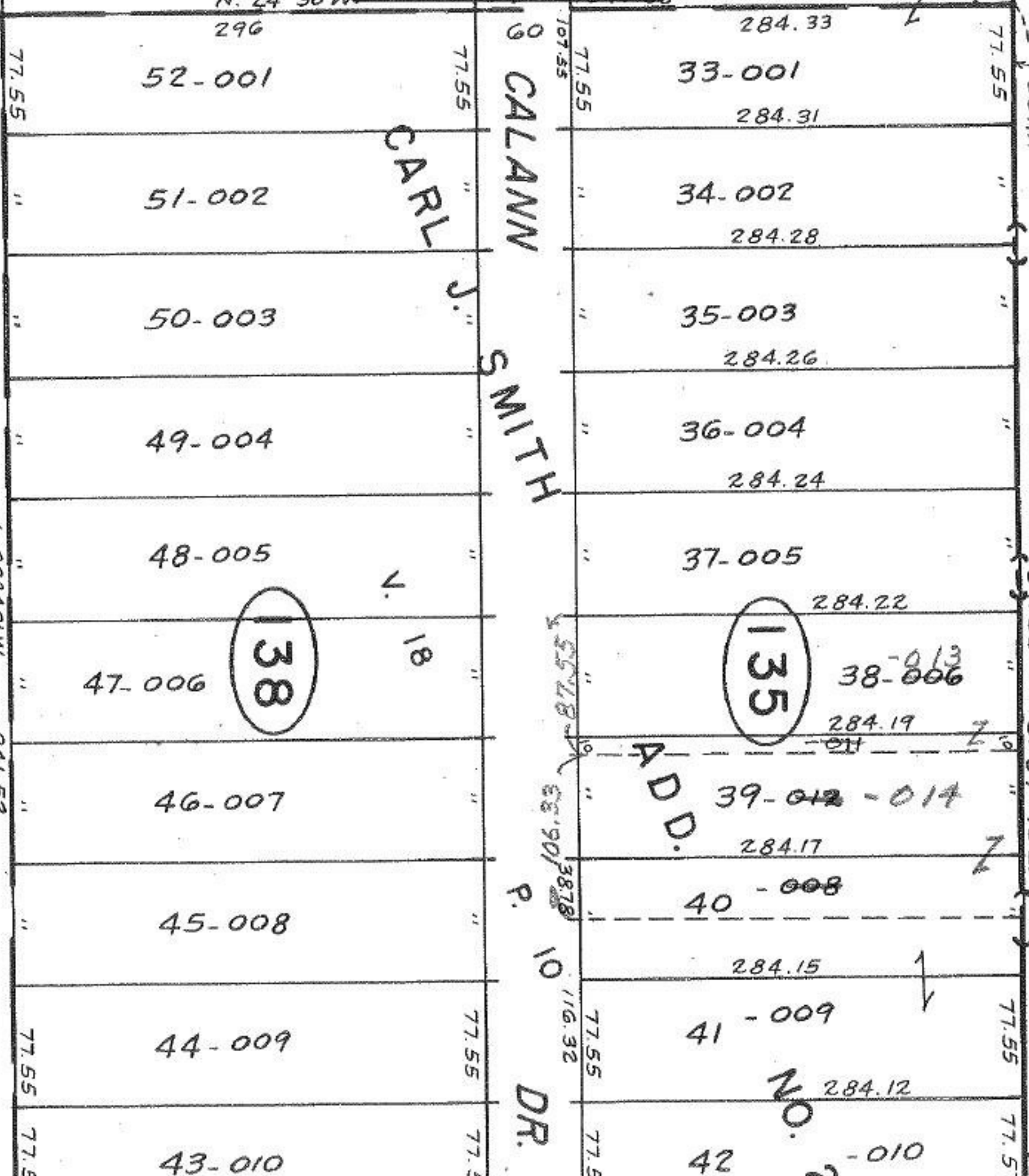


APPROVED
LORAIN CO.
MAP DEPT.
DATE 9/19/88
BY R.J. Williams

S. 89° 36' E.

60 GARFORD AVE. 60

N. 24° 30' W



SEE 6-140

LINE 7

N. 89° 43' W.

841.52

841.52

S. 89° 42' E.

P.

10

DR.

D.D.

70

2