

1349.19
830.9

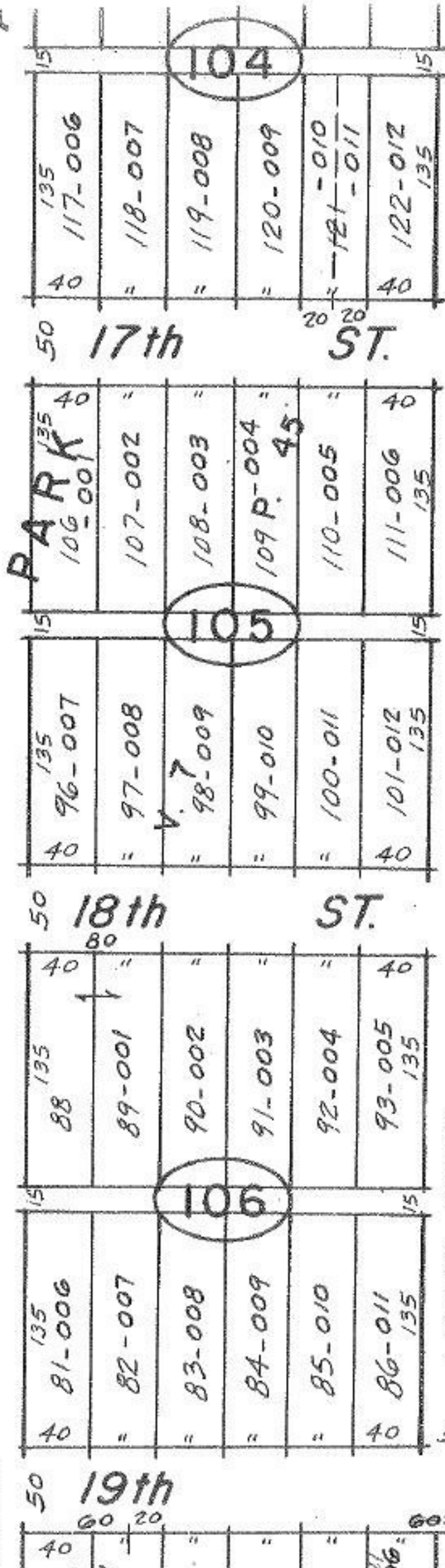
532.80

71-004
70-005
69
68-006
67-007
66-008
65-009
64-010
63-011
62-012
61-013
60-014
59-015
58-016
57
56
55-019
54-020
53-021
52-022

BIRMINGHAM

GLAS

A



3012

3012

(Handwritten signature)

APPROVED
LORAIN CO.
MAP DEPT.
DATE 9/4/69
BY [Signature]

7-23-69

ST.

53.11