

2983

Pt. -022  
Pt. 43.70 A.

Pt. -022  
Pt. 43.70 A.

2983

APPROVED
LORAIN CO.
MAP DEPT.
DATE 8/22/67
BY [Signature]

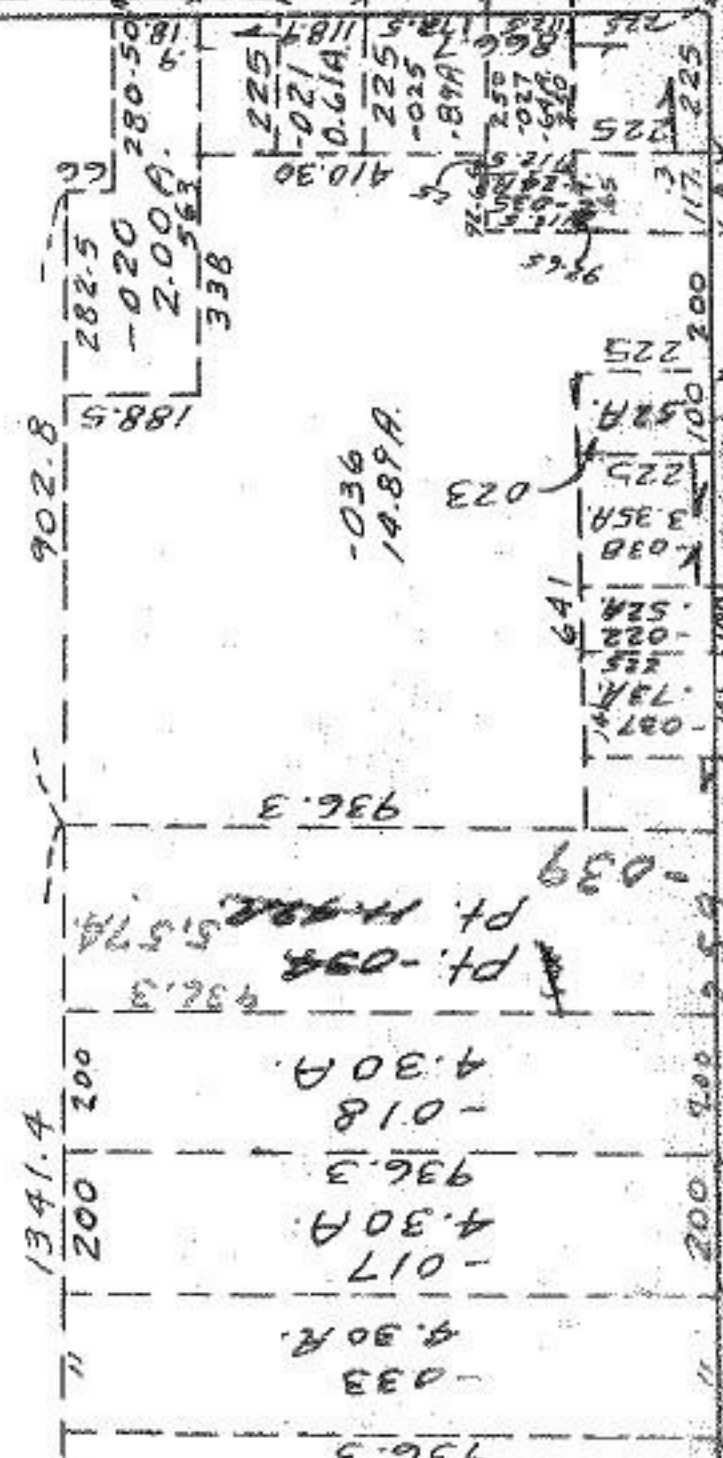
102

101

RD

-011  
74.40 A.

-013  
50.00 A. Dup.  
56.68 A. Map.  
52.36 A. Pl.



ARSONS

