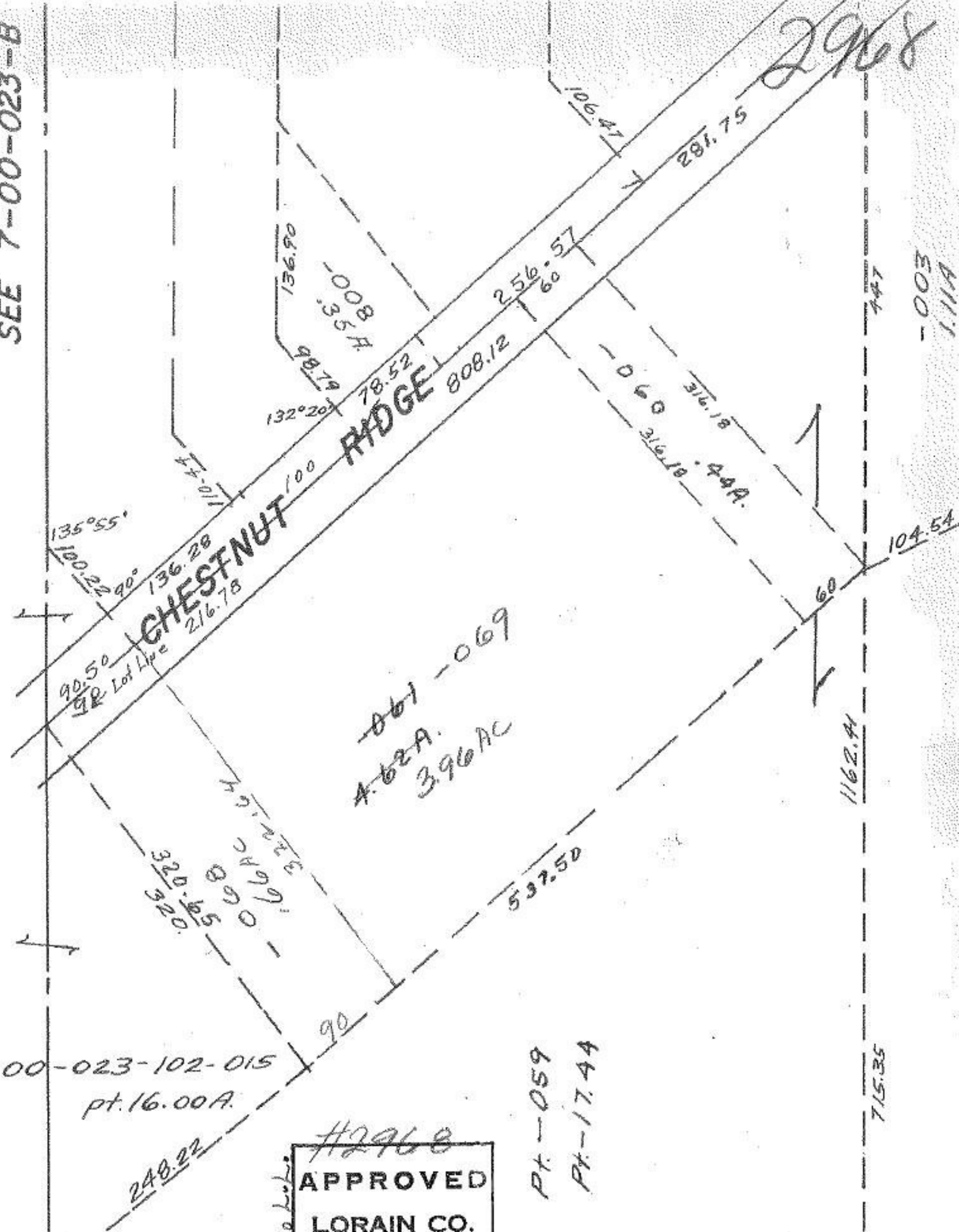


SEE 7-00-023-B

2968



Pt. 07-00-023-102-015
Pt. 16.00A.

#2968
APPROVED
LORAIN CO.

Pt. -059
Pt. -17.4A

-003
1.11A

715.35

1162.41

104.54

447

281.75

106.47

256.57
60

808.12

136.90

132°20'

135°55'

136.28
216.78

90.50
90

320.92

50.90

166.91

90

537.50

60