

-006
40.00 A.

-007
28.00 A.

839.8

839.8

360

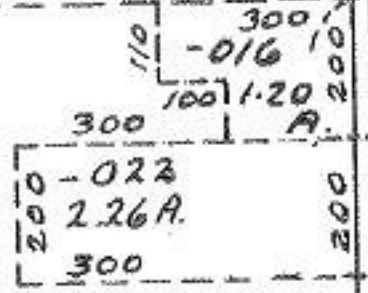
1452

-008
12.00 A.

360

1452

-020
.69 A.



-015
1.03 A.

-017
1.03 A.

-003
48.24 A.

1287.83
1289.83

-004
26.54 A.

1283.50

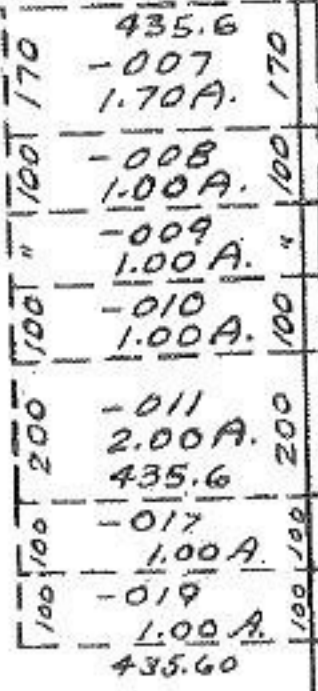
1885.52

1016.48

-024
59.41 A.

29

2805



1150

(150)

APPROVED

LORAIN CO.

AUG 18 1969