

625.46

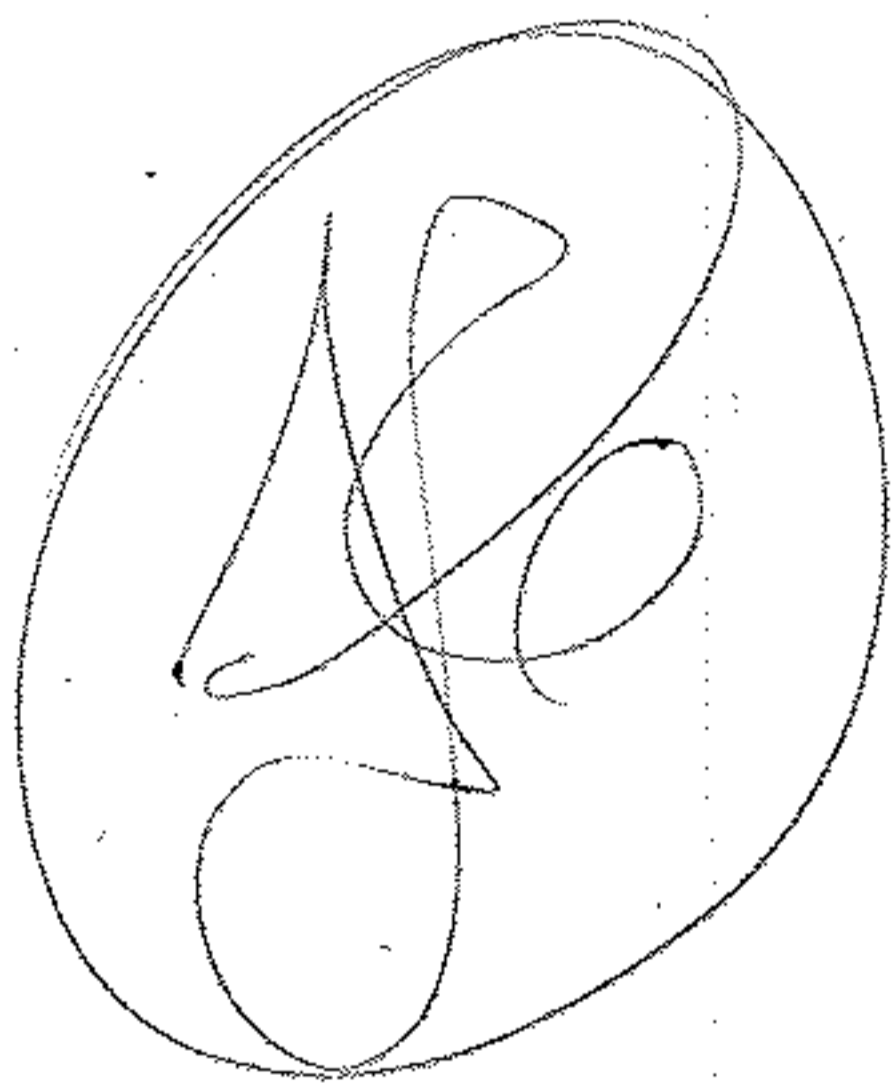
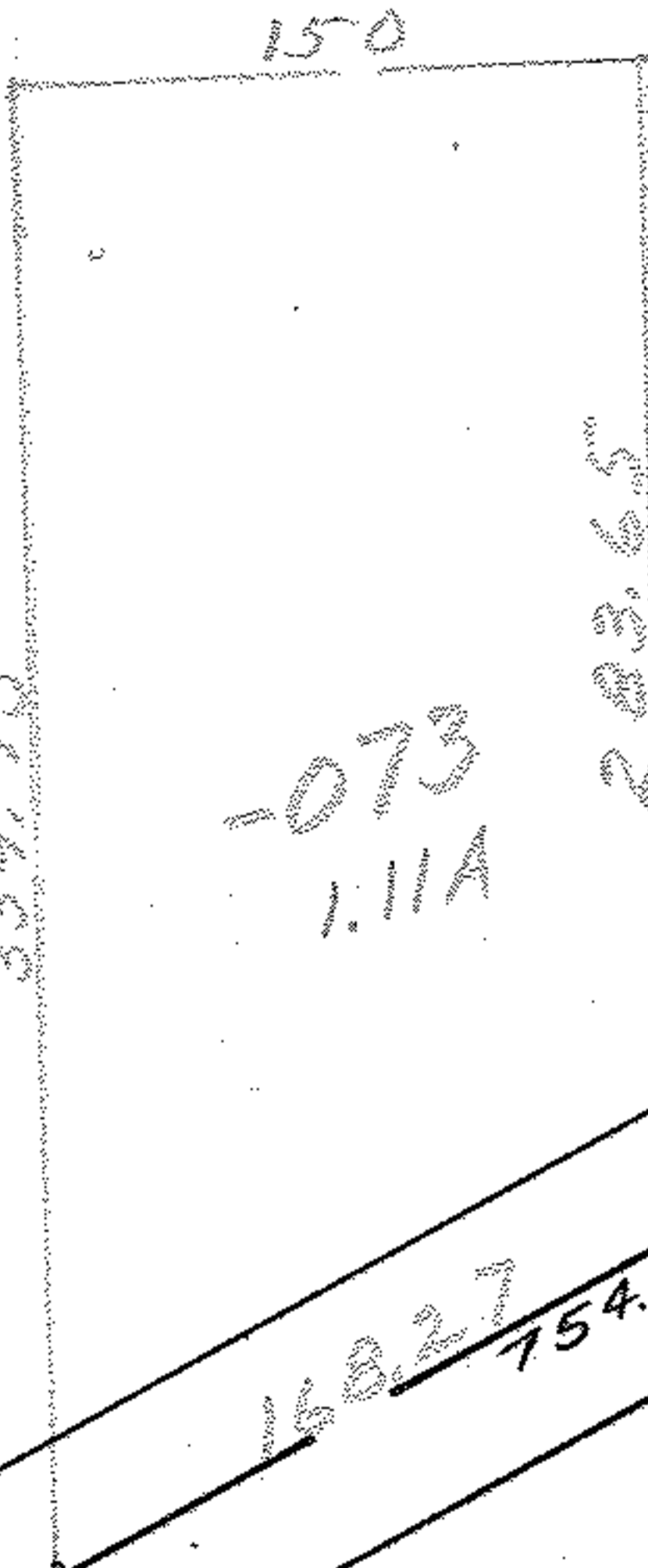
639.46

1521.42

-074  
-024  
19.03A  
17.72

558.85

SEE 4-00-003-H



RD.

7-16-84

APPROVED
LORAIN CO.
MAP DEPT.
DATE 7/23/69
4-01-003-B
BY
<i>B. J. Keating</i>

2890

-002 AUG 15 1969  
8.89A.

103

674.70  
674.55

245.02

83.65

173.35

4-00-003-G