

2871

-001  
54.00 A.

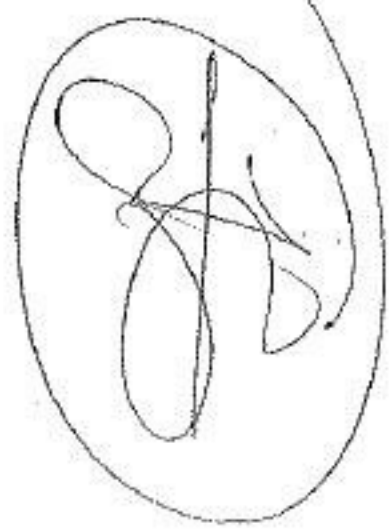
-002  
27.75 A.

94

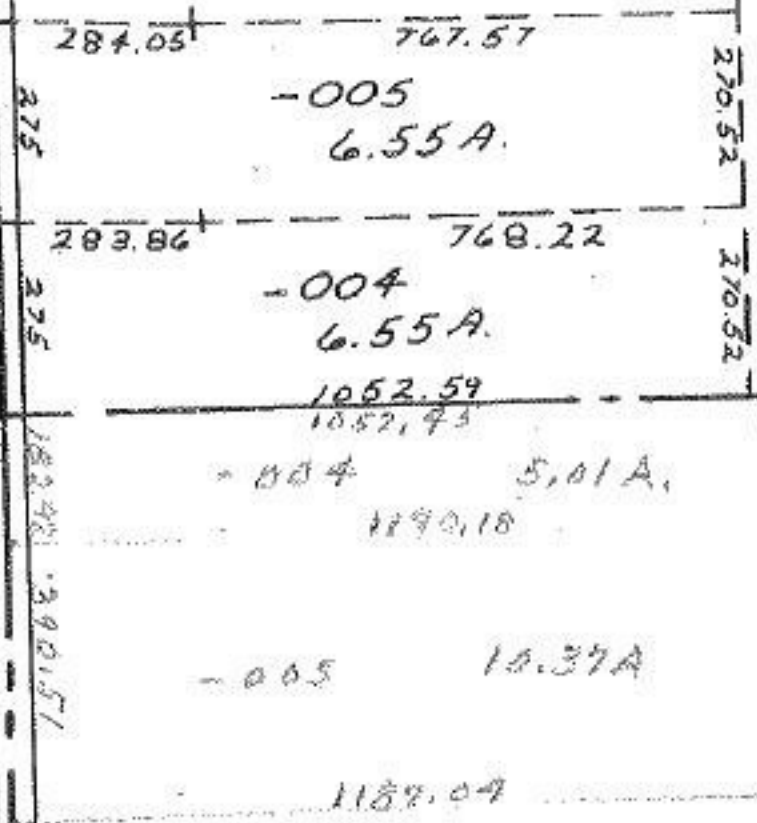
AUG 4 1969

APPROVED
LORAIN CO.
MAP DEPT.
DATE 9/15/69
BY [Signature]

-006  
~~-003~~  
~~71.25 A.~~  
~~55.87 A.~~



RD.  
(502602)



TWP.

LOTS 54, 55, 66, 67, 71, 75,