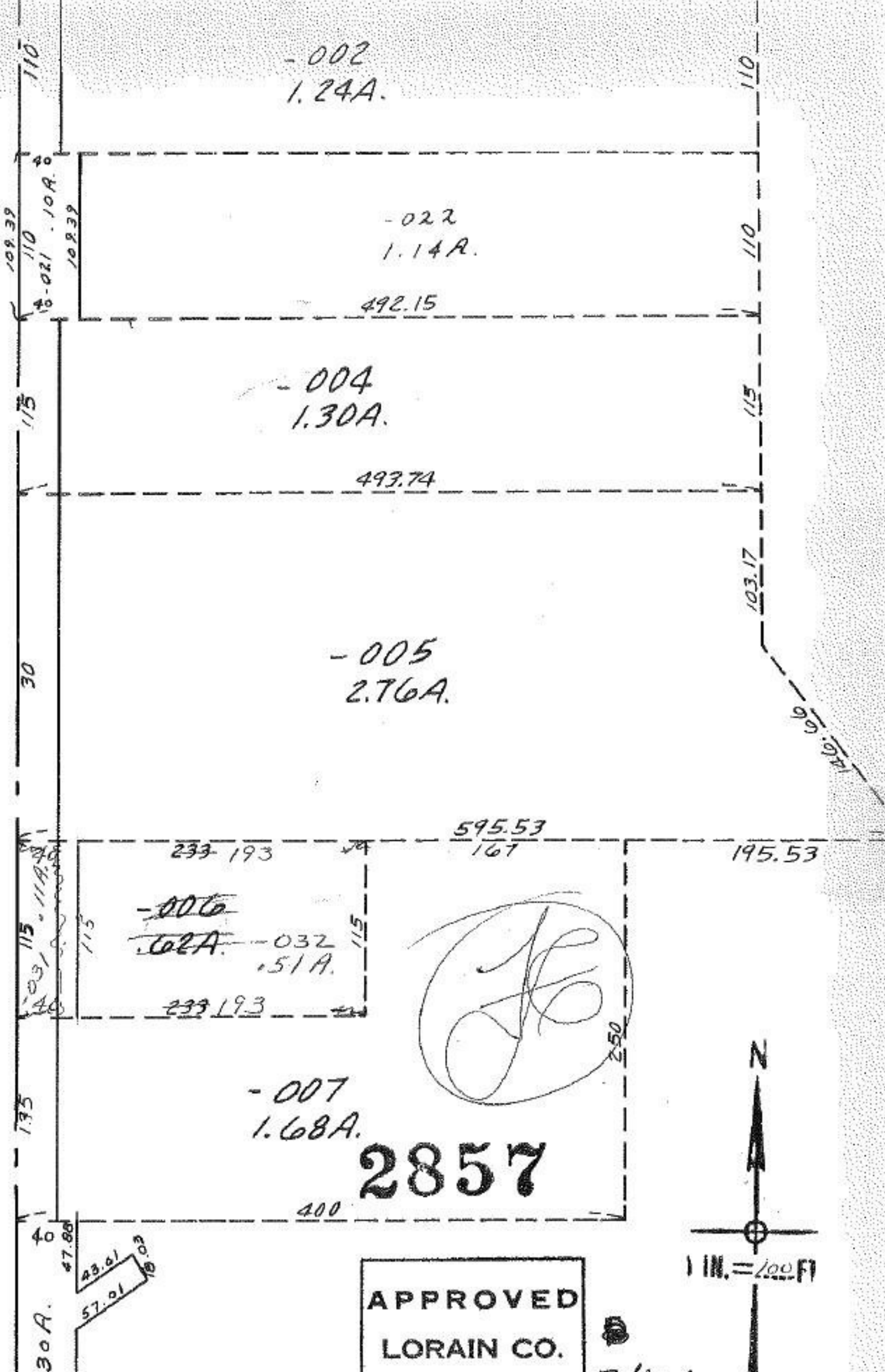


-B



- 002
1.24A.

- 022
1.14A.

492.15

- 004
1.30A.

493.74

- 005
2.76A.

595.53
167

~~- 006~~
~~1.62A.~~ - 032
.51A.

233.193

- 007
1.68A.

2857

400

30A.
47.88
43.61
57.01
18.03

APPROVED
LORAIN CO.

