

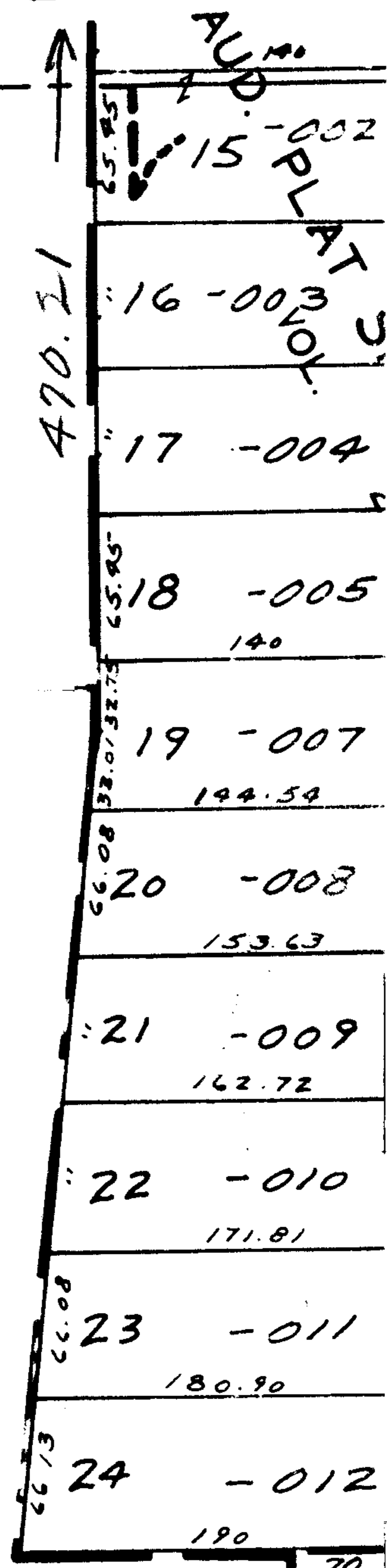
Lot 12
Lot 13

267.65
Lot 8

703.47
968.12

SEE 2-02-013A

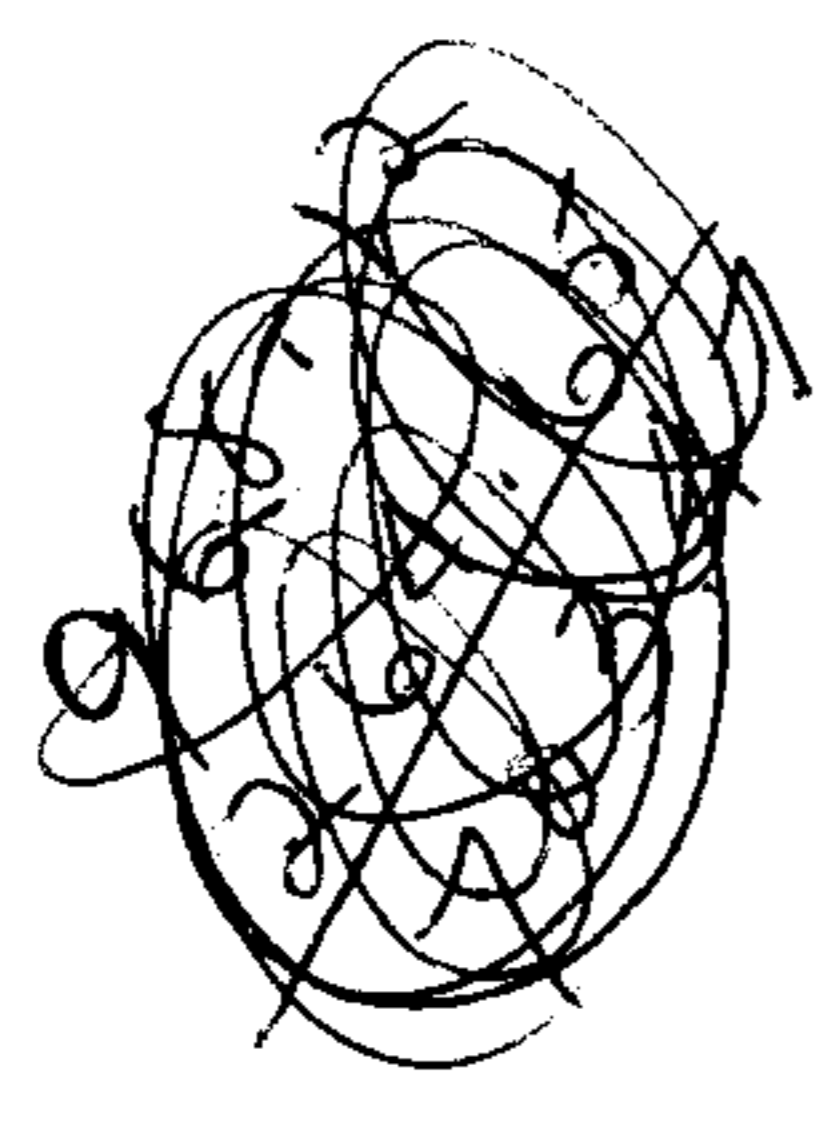
-016
3.34



101

-017
-015
14.34A.
11.00

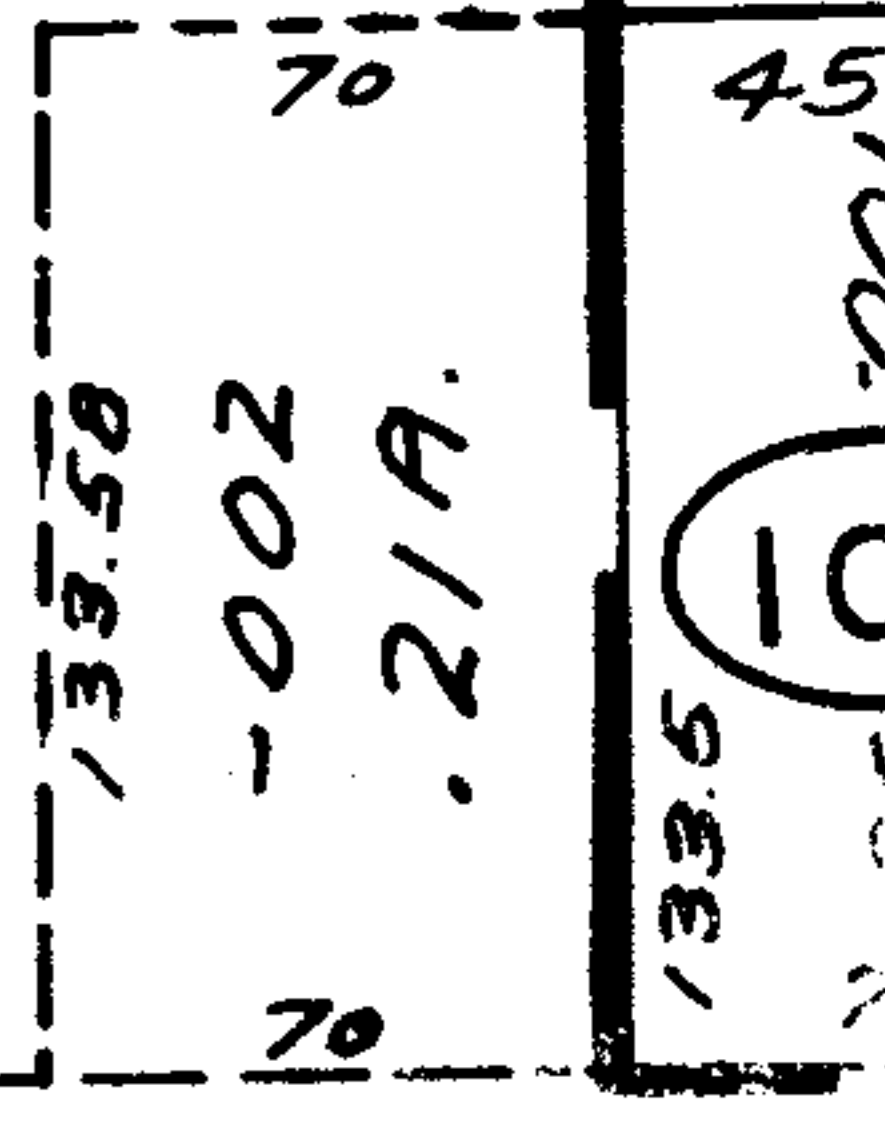
JUN 12 1969 2725



APPROVED
LORAIN CO.
MAP DEPT.
DATE 5/21/69
BY R. J. Melling

SKYLINE PARK
VOL. 23

SUB. NO. 1
PG. 69



89°32'

2259