

SEE 10-00-020-



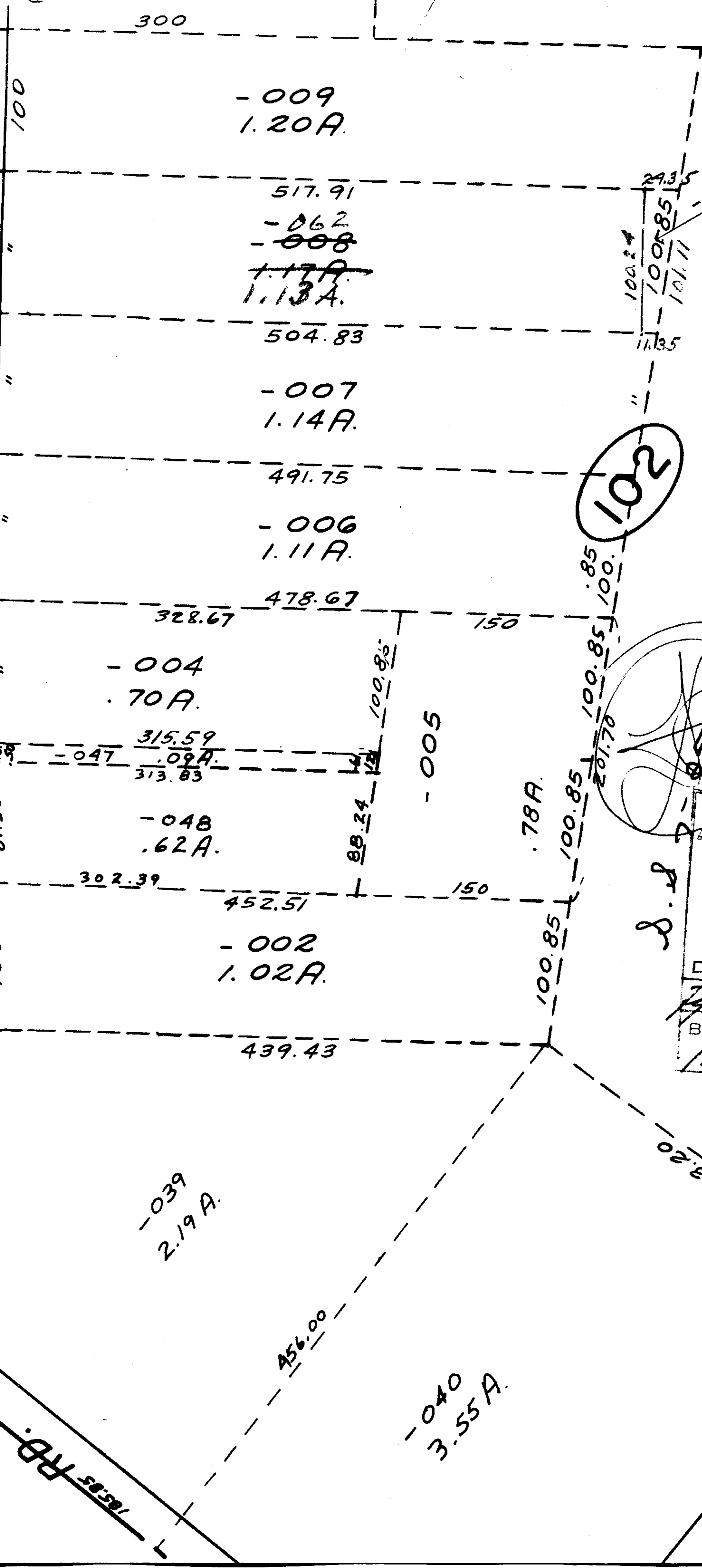
OBERLIN - ELYRIA

237.28

259.64

60

RD.



-009
1.20A

517.91

-062
~~-008~~

~~1.17A~~
1.13A

504.83

-007
1.14A

491.75

-006
1.11A

478.67

-004
1.09A

315.59

-047
1.09A

313.83

-048
1.02A

302.39

452.51

-002
1.02A

439.43

-039
2.19A

-040
3.55A

102

100.24

100.85

100.85

100.85

100.85

100.85

100.85

100.85

100.85

100.85

100.85

100.85

100.85

100.85

100.85

100.85

100.85

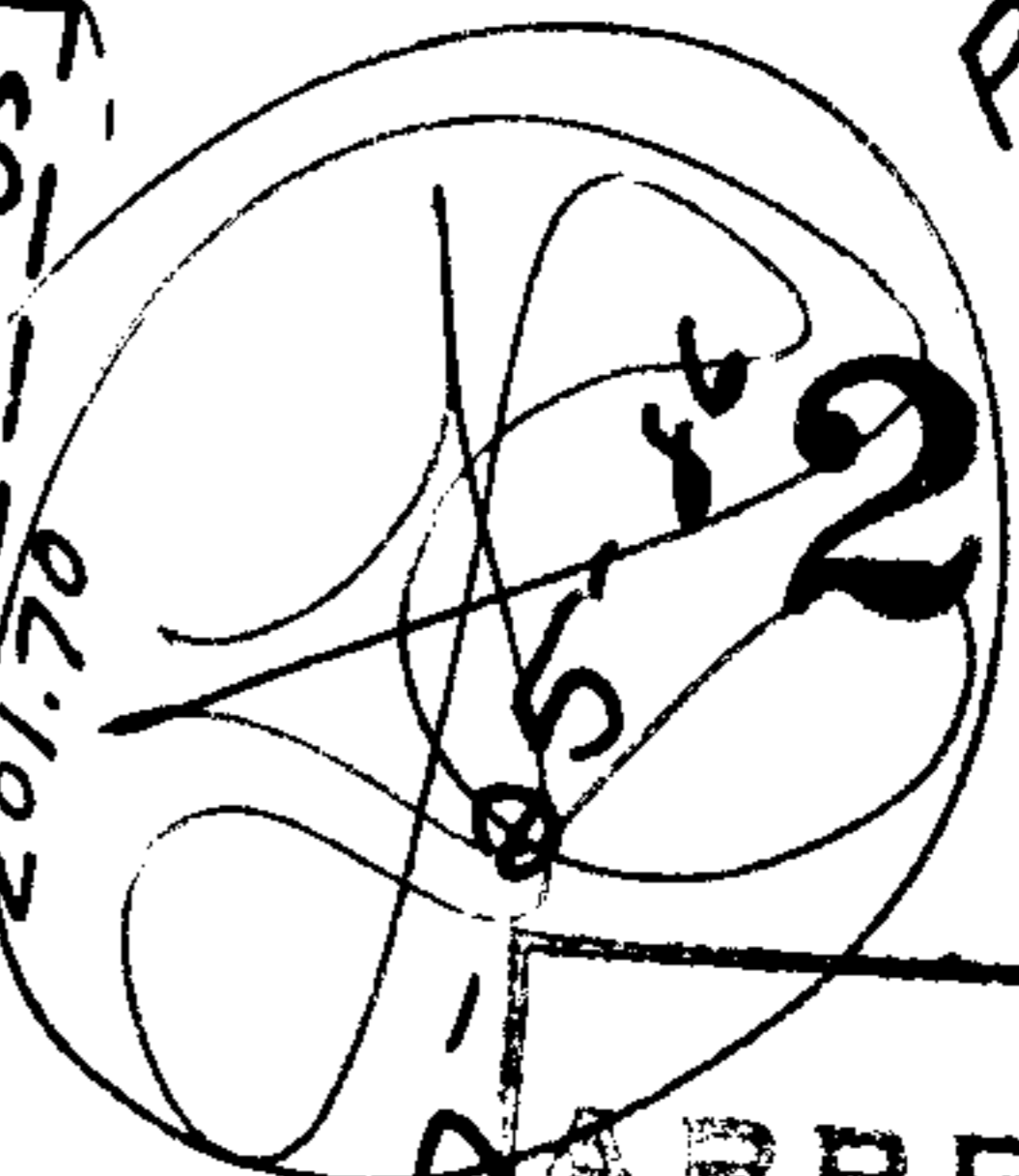
100.85

100.85

100.85

100.85

517.91
24.35
493.56



Pt. 052
Pt. 12.10A

APPROVED
LORAIN CO.
MAP DEPT.
DATE 5/15/69
10-00-020-E
BY
A.J. Kelling

393.20

HINGS 454.7

906.38
906.2