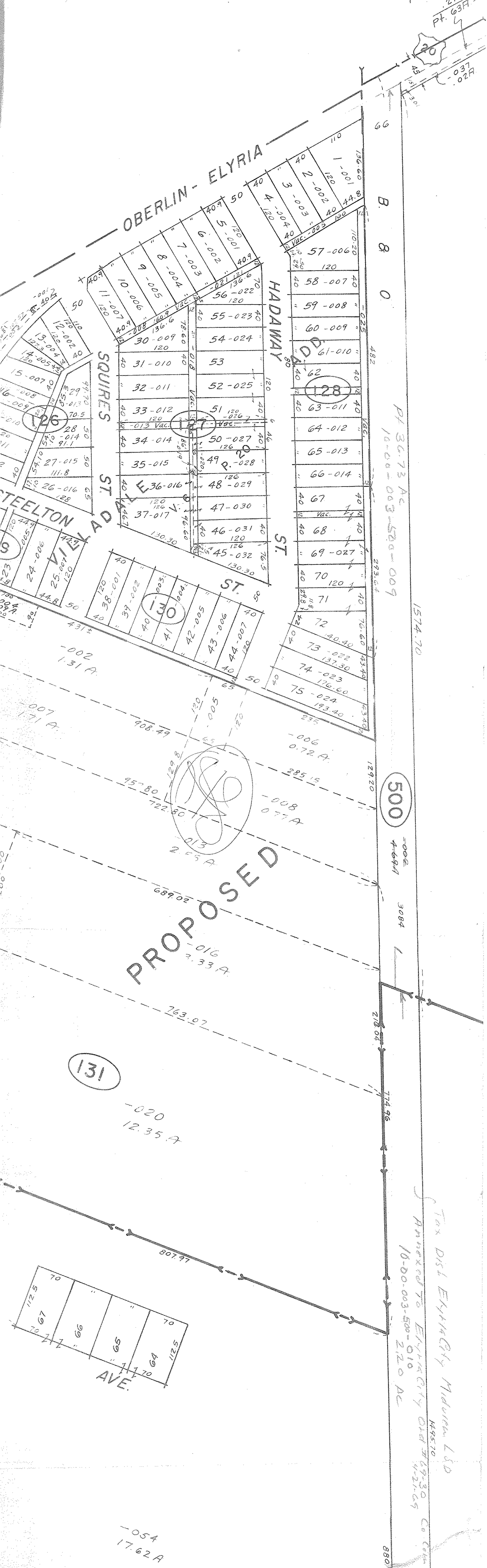


Pt. 10-00-003-12
36A - Dup
27A - Du
Pt. 63A - Tc



Pt. 36.73 Ac
10-00-003-500-009

1574.70

500

PROPOSED

131

Tax Dist Elyria City Midway L&D
Annexed to Elyria City Dist 49-30 Co. Comm. Res. 69-111
10-00-003-500-010
2120 AC

AUG 1 1969

Note These Changes
on Counter Maps
& Cronaflex Tracings
LWHall

APPROVED
LORAIN CO.
MAP DEPT.
DATE 5/14/69
10-00-003-500-010
BY LWHall

WLY. PT. S.E. 1/4

#2700
Note 36.73 Ac
P.P. No 10-00-003-500-009
To be placed on all
B&O R.R. R/W on Pgs →

SEC. 3
106
014 EV
014 EV
014 EV
104B
104B