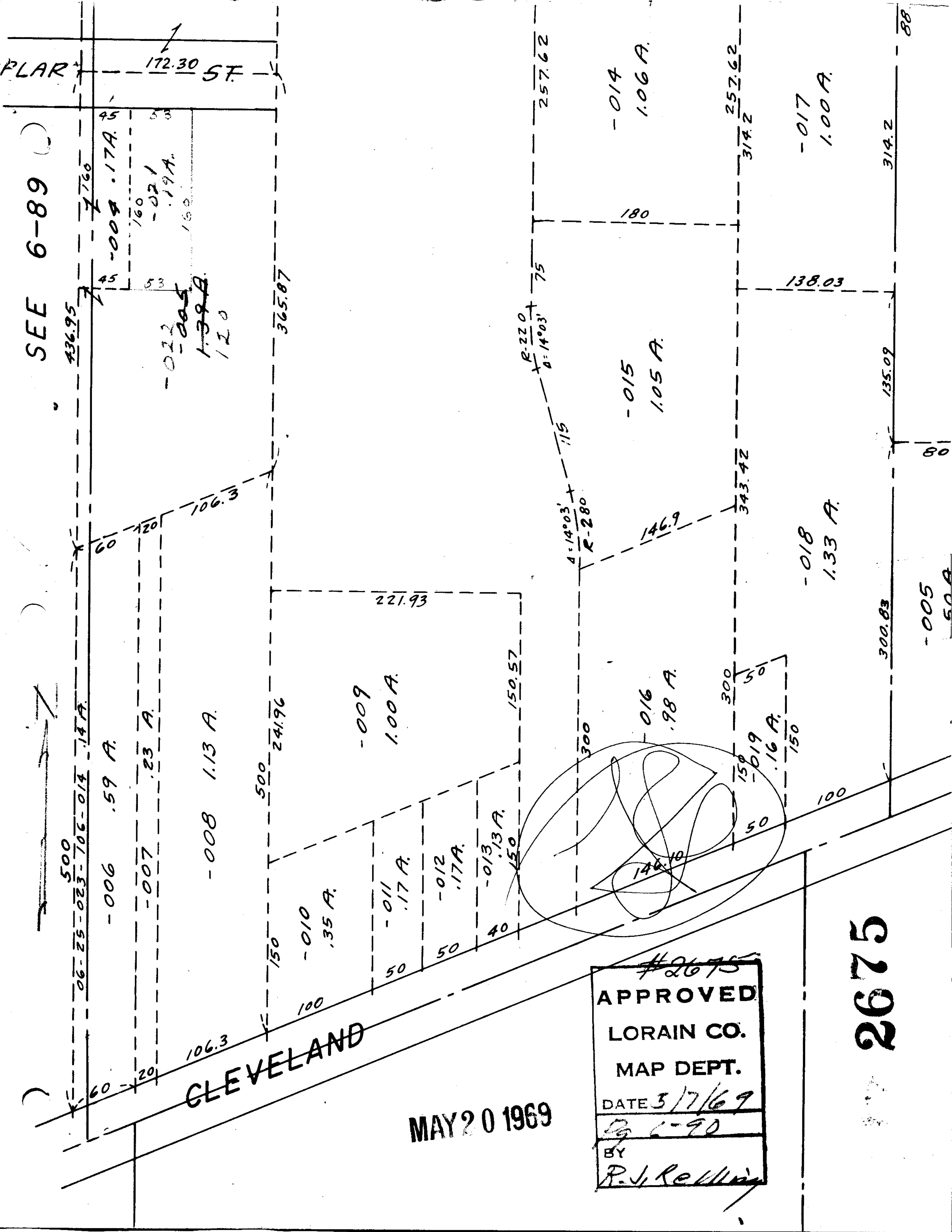


SEE 6-89



CLEVELAND

MAY 20 1969

#2675
APPROVED
LORAIN CO.
MAP DEPT.
 DATE 3/7/69
 BY
 P. J. Reilly

2675

-005
50 A.

-018
1.33 A.

-015
1.05 A.

-014
1.06 A.

-017
1.00 A.

135.09

300.83

314.2

88

500
06-25-023-706-014 .14 A.

-006 .59 A.

-007 .23 A.

-008 1.13 A.

-010 .35 A.

-011 .17 A.

-012 .17 A.

-013 .13 A.

-016 .98 A.

300

50

-019

.16 A.

150

221.93

500 241.96

150.57

300

146.9

343.42

138.03

180

257.62

314.2

80

80

436.95

176

-004 .17 A.

160

-021

.19 A.

160

-022

-005

1.39 A.

120

365.87

R-220
4=14°03'

R-280
4=14°03'

4=14°03'

75

115

257.62

PLAR 172.30 ST.