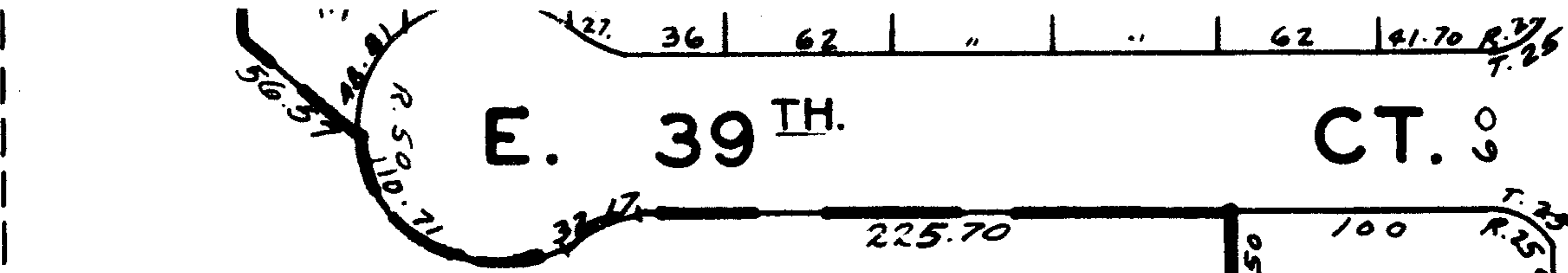


E. 39<sup>TH</sup> CT. 0



Pt. 5.58A

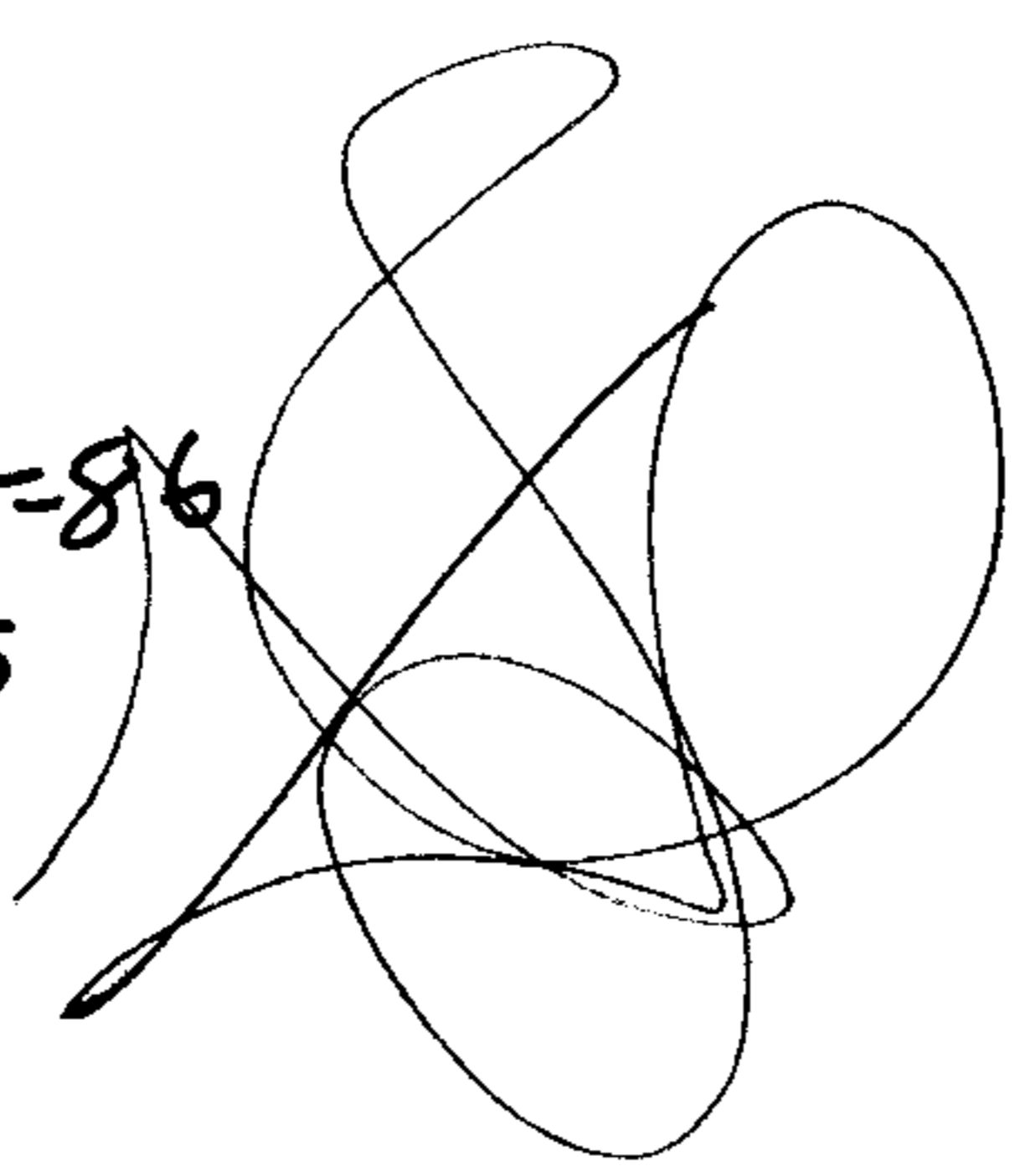
MAY 20 1969

108

**APPROVED**  
**LORAIN CO.**  
**MAP DEPT.**  
 DATE 4/30/69  
 P. 3-00-100-A  
 BY R. J. Kelling

-003  
5.56 A.

7-15-86  
S.S



NO.

- 349-024
- 350-022
- 351-023
- 352-024
- 353-025
- 354-026
- 355-027

475.70

600.70

PG. 87

SUB.

439.93  
519.93

BLK. A.

-029  
-028  
6.07 A.

VOL. 24

ACRES

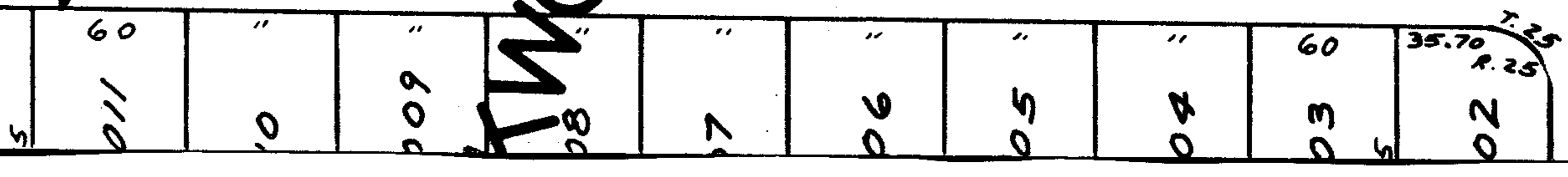
2655

575.70

Pt. 03-00-100-900-001  
1280.70

Pt. 5.58A.

ST. 80



TIMWOOD

879.43

414.93

