

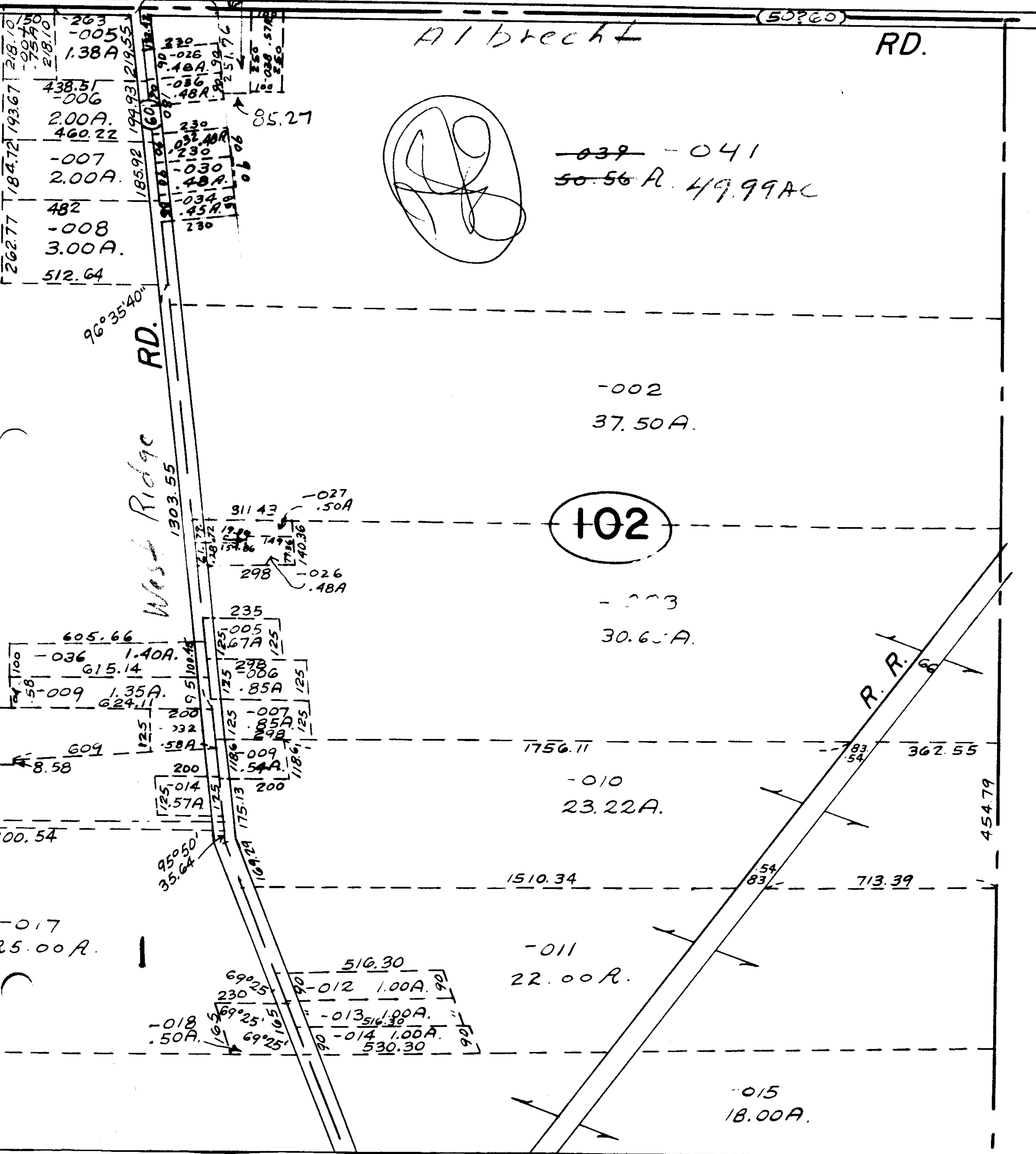
10A



#2648
 APPROVED
 DATE 4-25-69
 BY L.W. [Signature]

MAY 20 1969

31.62
 57 AC
 - 040
 15.0



262.77 184.72 193.67 218.10
 -004 1.50A
 438.51
 -006 2.00A
 460.22
 -007 2.00A
 482
 -008 3.00A
 512.64

605.66
 -036 1.40A
 615.14
 -009 1.35A
 624.11

-017
 25.00A

516.30
 -012 1.00A
 -013 1.00A
 -014 1.00A
 530.30

Albrecht RD.

West Ridge RD.

R.R.

102

-002
 37.50A

-003
 30.65A

-010
 23.22A

-011
 22.00R

-015
 18.00A

~~-039 - 041~~
~~50.56 A. 49.99 AC~~

(50?60)

RD.