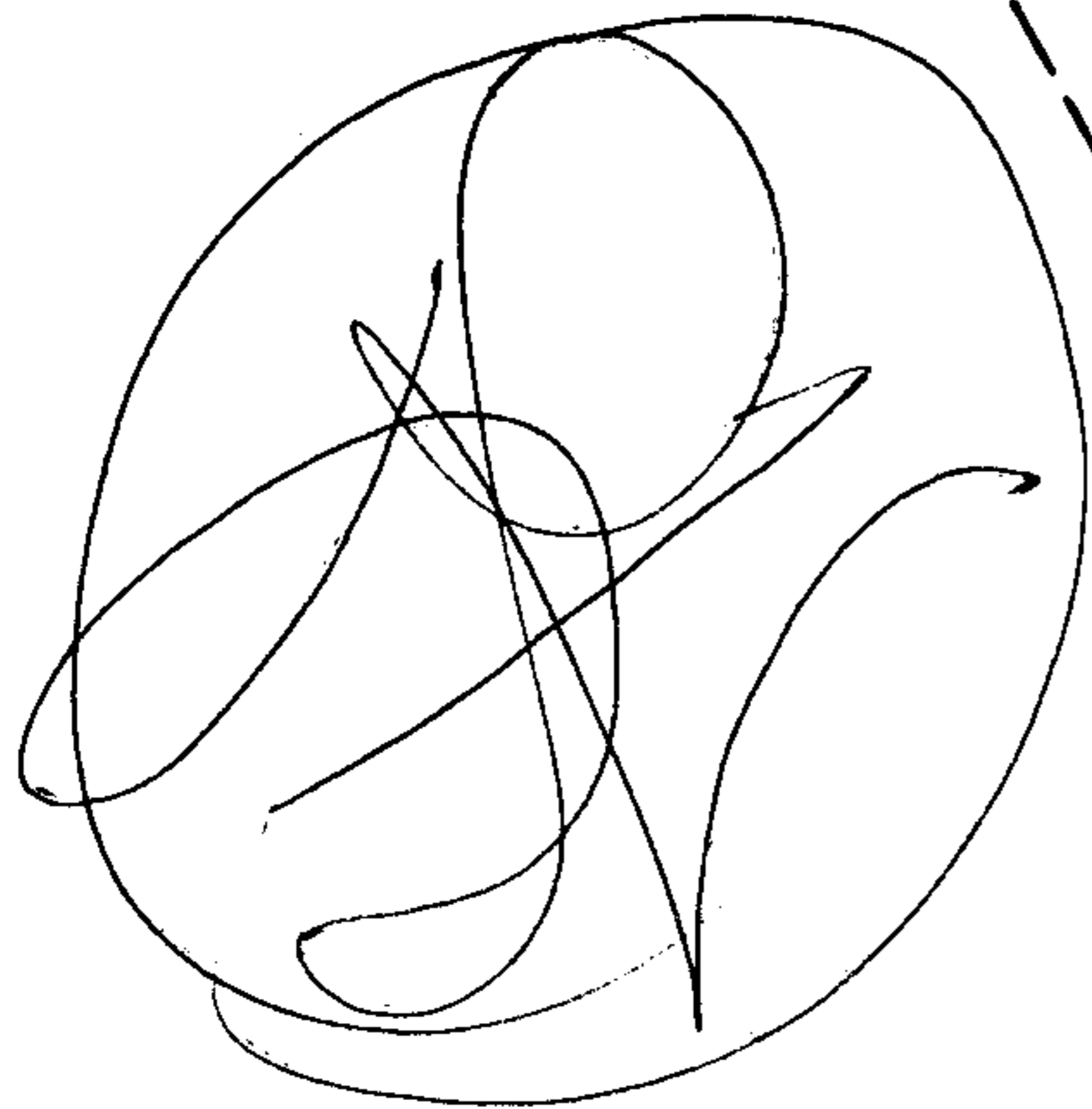


MAY 3 1969

2623

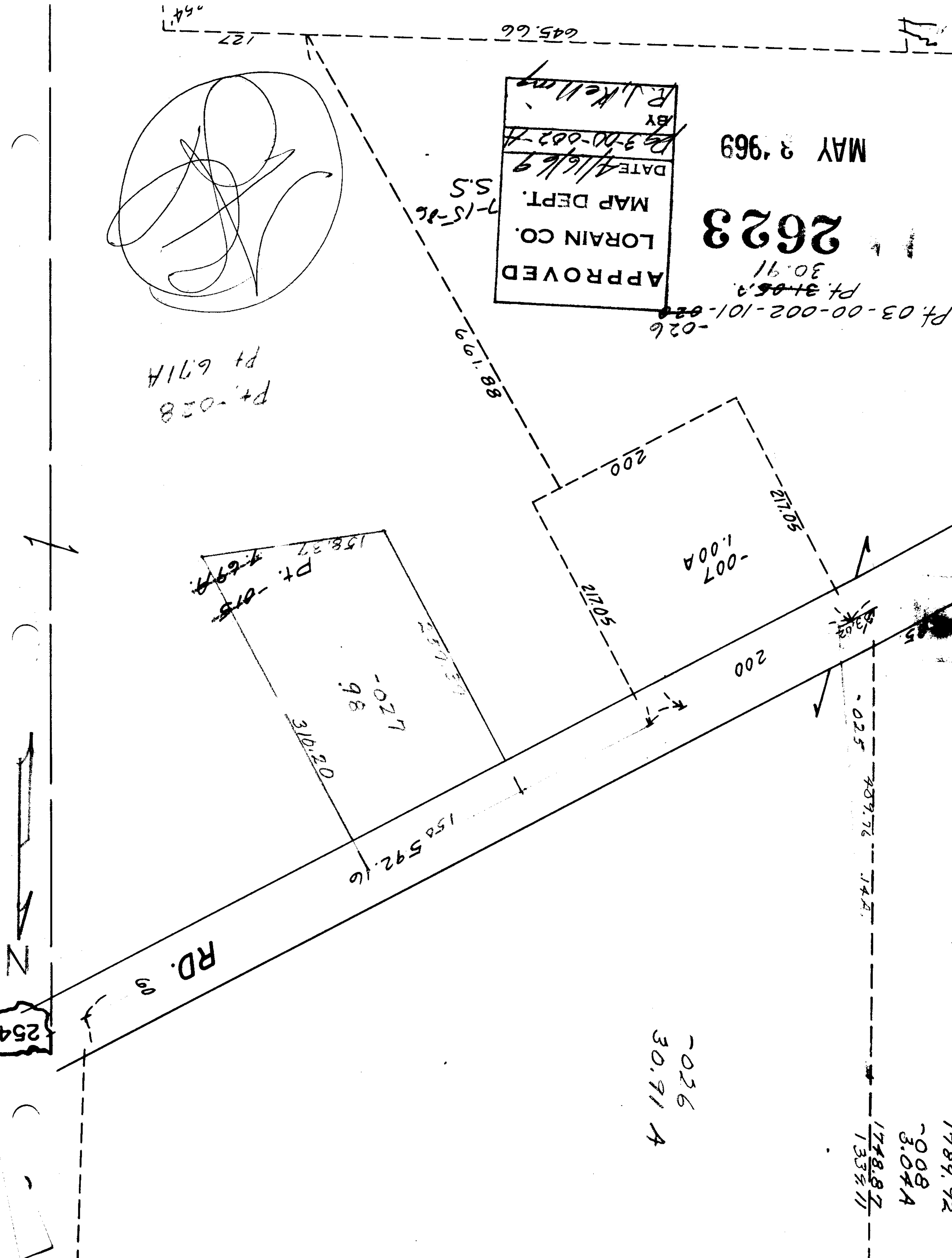
APPROVED
 LORAIN CO.
 MAP DEPT.
 DATE 4/16/69
 BY R. J. Kelly
 13-3-00-002-A

Pt. 3+05.0
 30.91
 P. 03-00-002-101-026
 -026



Pt. -028
 Pt 671A

7-15-86
 S.S



-026
 30.91 A

1789.92
 -008
 3.04A
 1748.87
 1334.11

254

RD. 99

Pt. -015
 4-6-99

-027
 98

-007
 1.00A

-025
 489.76

14A

1748.87

1334.11

645.66

127

64'

N