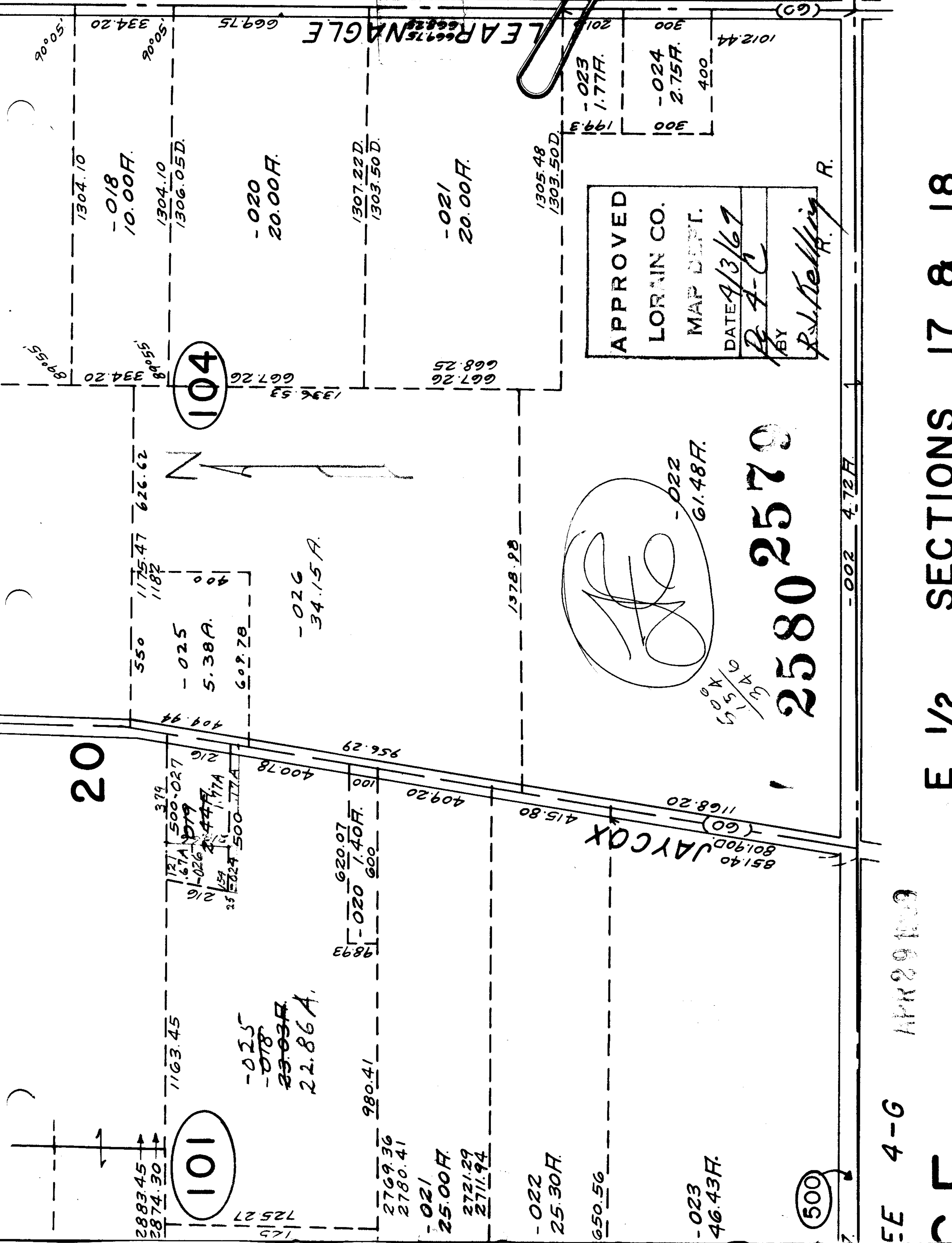


20

101

104



APPROVED  
 LORAIN CO.  
 MAP DEPT.  
 DATE 4/3/67  
 BY R. S. Kellogg R.

*S*  
 -022  
 61.48F.

25802570

JAYCOX  
 851.40  
 801.90D  
 1168.20

EE 4-G APR 29 1967

E 1/2 SECTIONS 17 & 18

500

-002 4.72F

-023  
 46.43F.

-022  
 25.30F.

-021  
 25.00F.  
 2721.29  
 2711.94

2769.36  
 2780.41

-025  
 -018  
 23.03F.  
 22.86A.

2883.45  
 2874.30

1163.45

121.67A  
 1.67A  
 1.026  
 2.447  
 1.59  
 1.97A  
 500.17A

550  
 1175.47  
 1187  
 626.62  
 -025  
 5.38A.  
 609.28

-026  
 34.15A.

1378.98

667.26  
 668.25

1336.53  
 667.26

-021  
 20.00F.

1307.22D.  
 1303.50D.

-020  
 20.00F.

1304.10  
 1306.05D.

-018  
 10.00F.

1304.10

1305.48  
 1303.50D.

-023  
 1.77F.

-024  
 2.75F.

400

1012.44

(60)



LEARN NAGLE

50°06'

50°06'

669.75

334.20

8955

8955

334.20

7