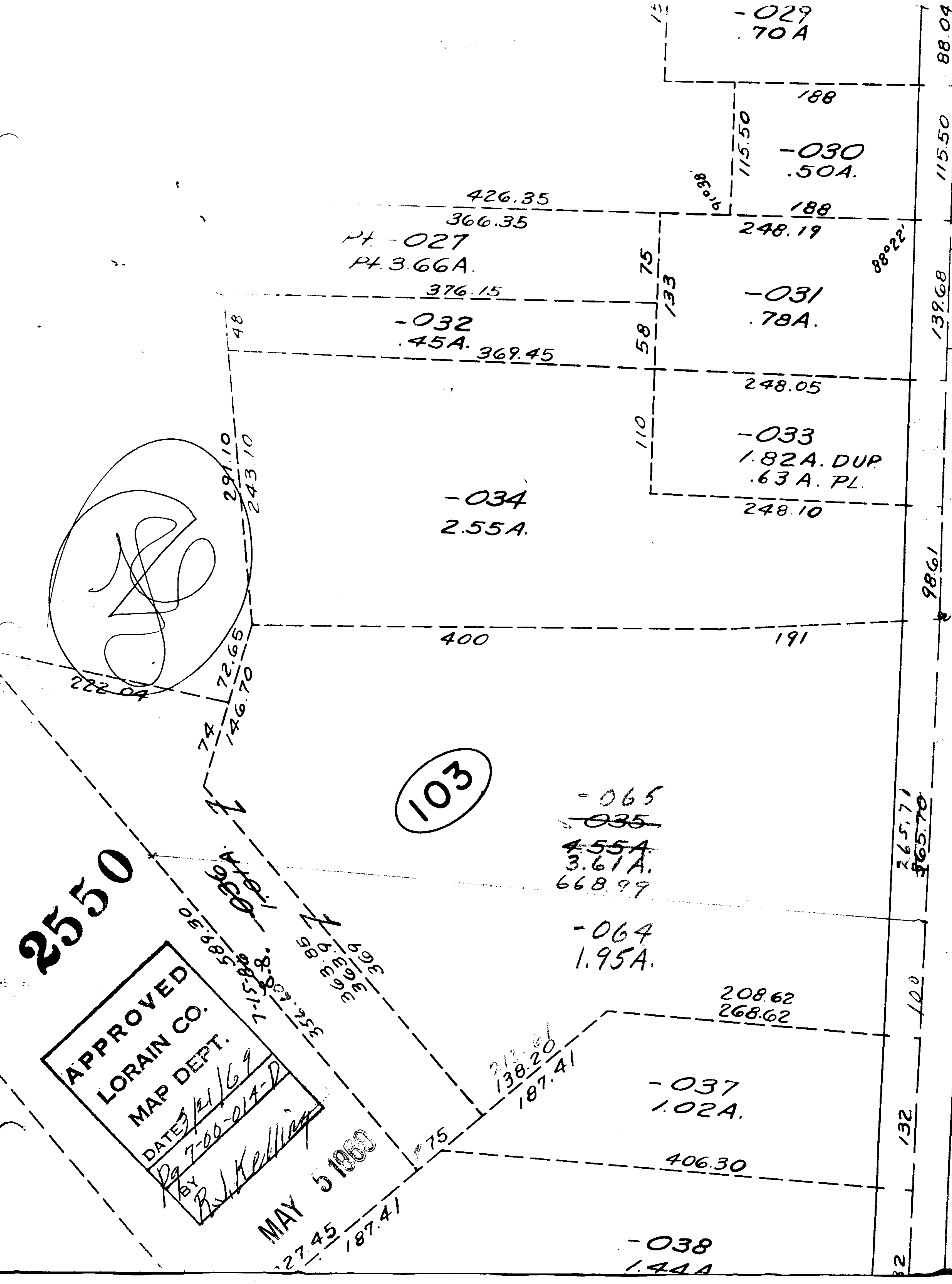


2550

APPROVED
LORAIN CO.
MAP DEPT.
DATE 3/21/69
BY [Signature]
7-00-014-D

MAY 5 1969

103



PT. -027
PT. 3.66A.

-032
.45A. 369.45

-034
2.55A.

-065
~~035~~
~~4.55A.~~
3.61A.
668.99

-064
1.95A.

-037
1.02A.

-038
1.44A

-029
70A

-030
.50A.

-031
.78A.

-033
1.82A. DUP
.63A. PL.

208.62
268.62

88.04
115.50
139.68
98.61
265.71
365.70
100
132
82