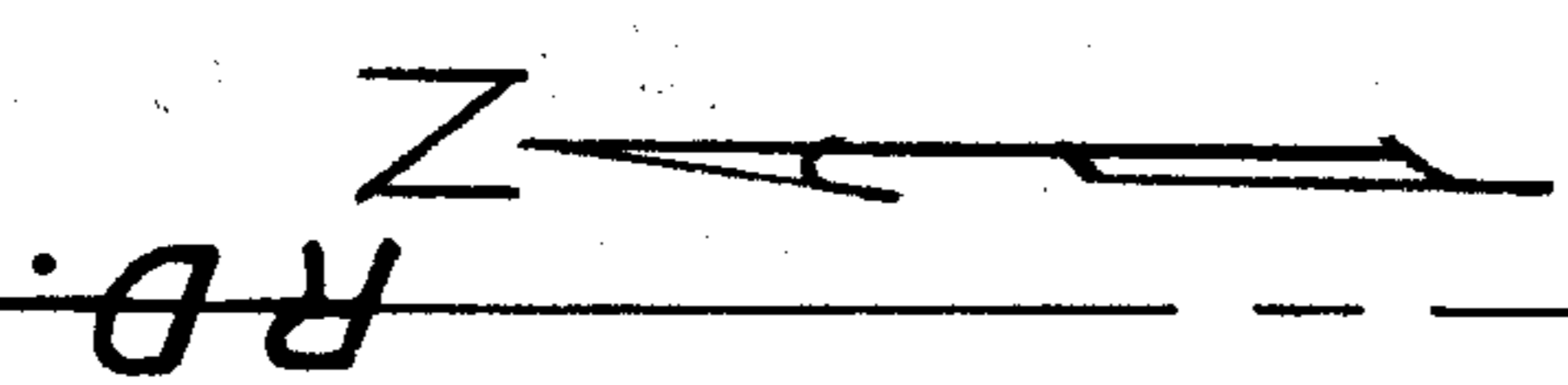


SEE DETAIL ON 6.52

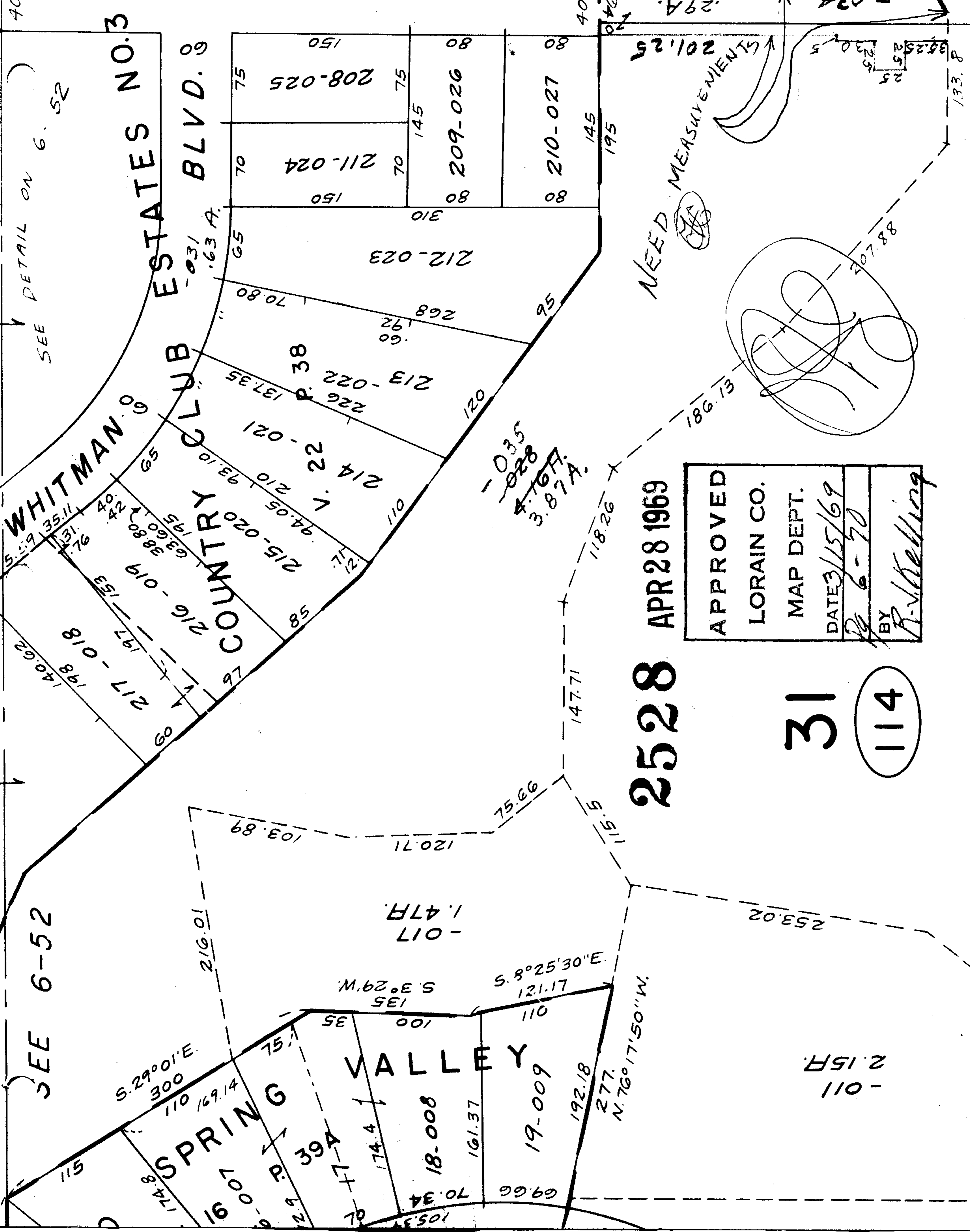
SEE 6-52

WHITMAN CLUB ESTATES NO. 3
COUNTRY CLUB BLVD. 09

SEE SPRING VALLEY



R.D.



2528 APR 28 1969

APPROVED
LORAIN CO.
MAP DEPT.
DATE 3/15/69
BY 6-70
BY R. V. Bell

31 114

NEED MEASUREMENTS

291.50 -034

-011 2.15 F.

-017 1.47 F.

253.02

147.71 118.26 115.5

120.71 75.66 103.89

S. 29° 01' E. 300'

S. 8° 25' 30" E. 121.17'

M. 62° 08' S 3° 29' W. 135'

N. 76° 17' 50" W. 277'

SEE SPRING VALLEY