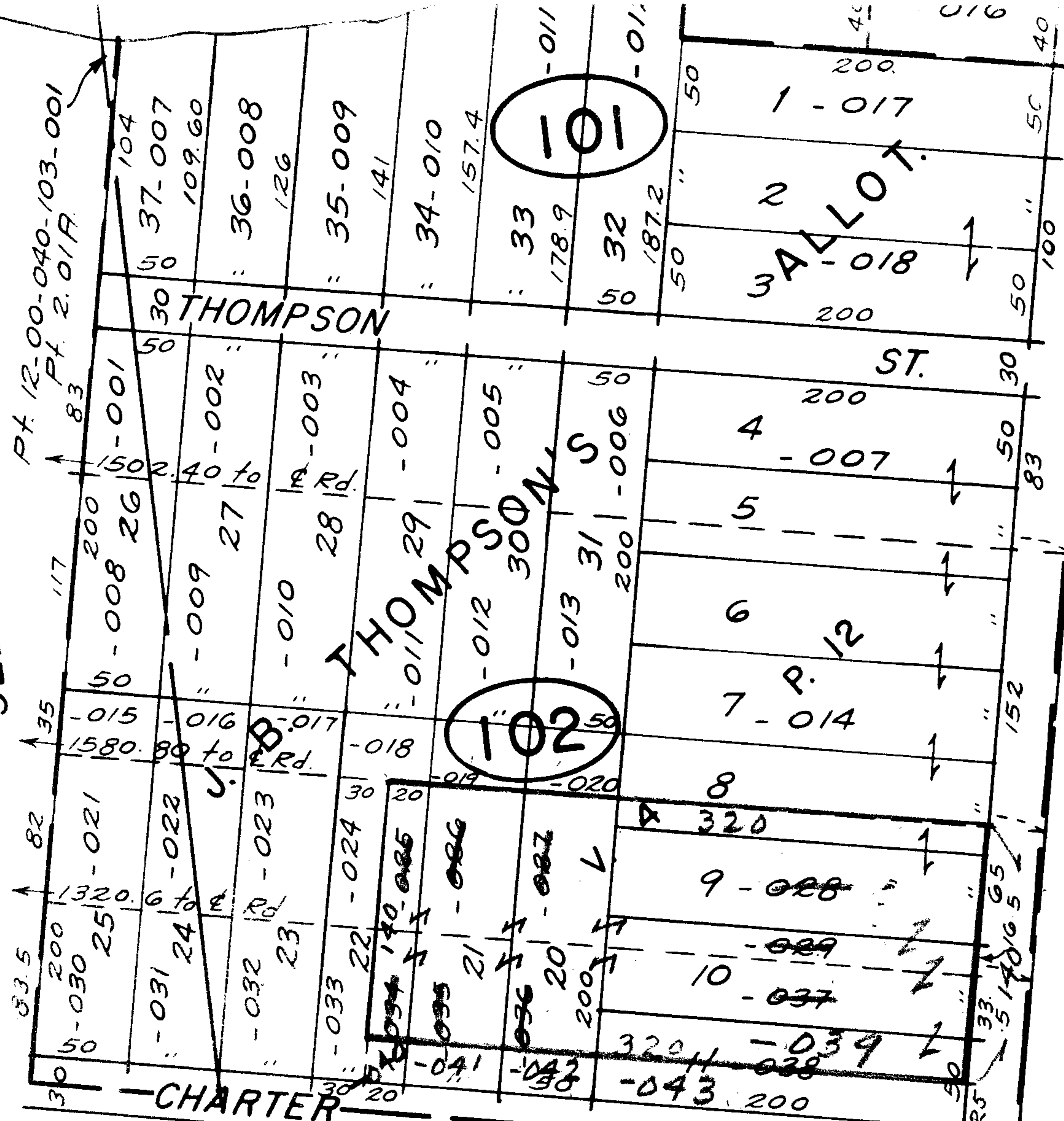
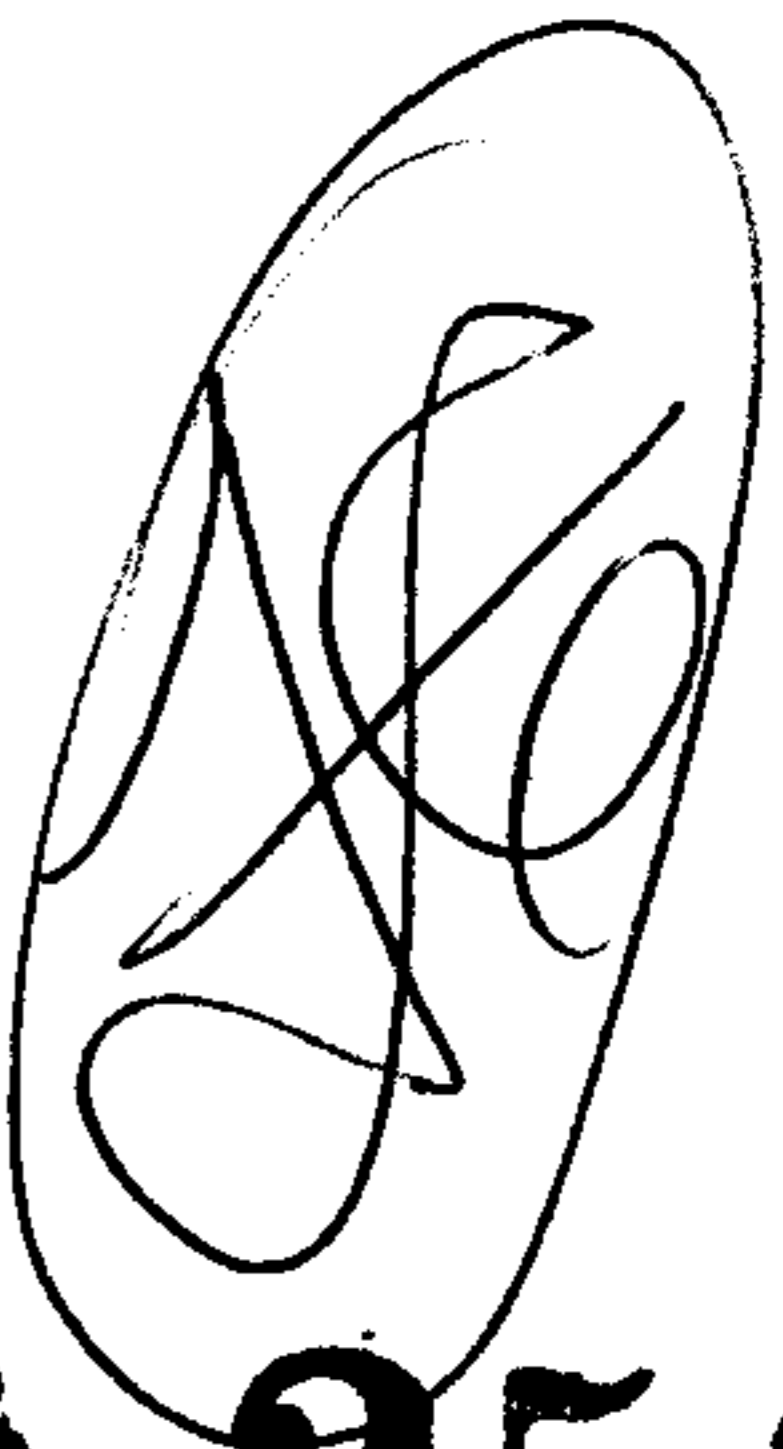


SEE 12-00-040-B



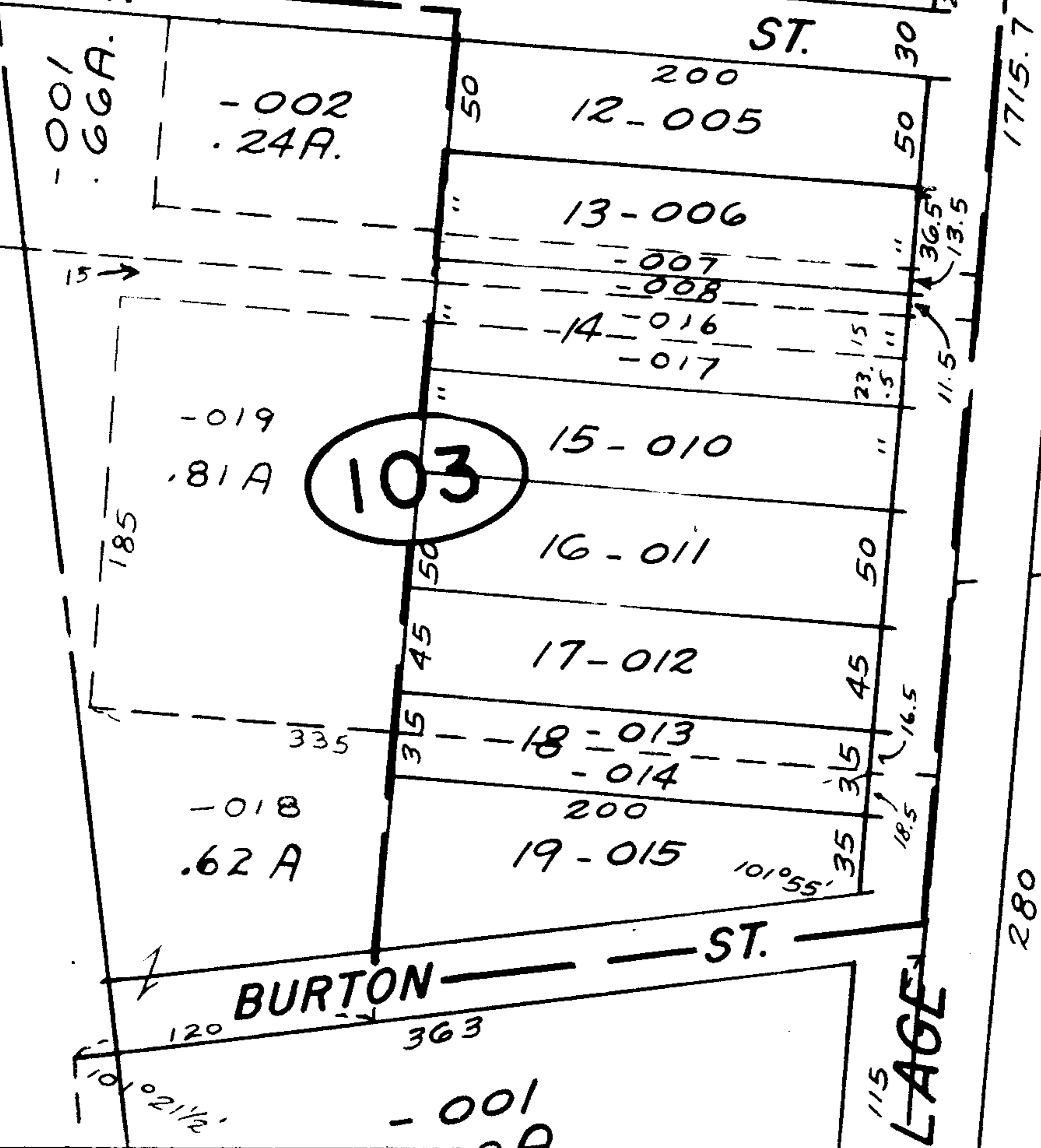
252

S.S. 7-25-66



2502  
MAY 20 1969

APPROVED  
LORAIN CO.  
MAP DEPT.  
DATE 3/10/69  
BY 12-00-021-A  
R. J. Kelling



10  
Pt -  
Pt 1

158.8  
- 011  
1.00A.

280  
190  
79.65  
- 012  
20A.  
120