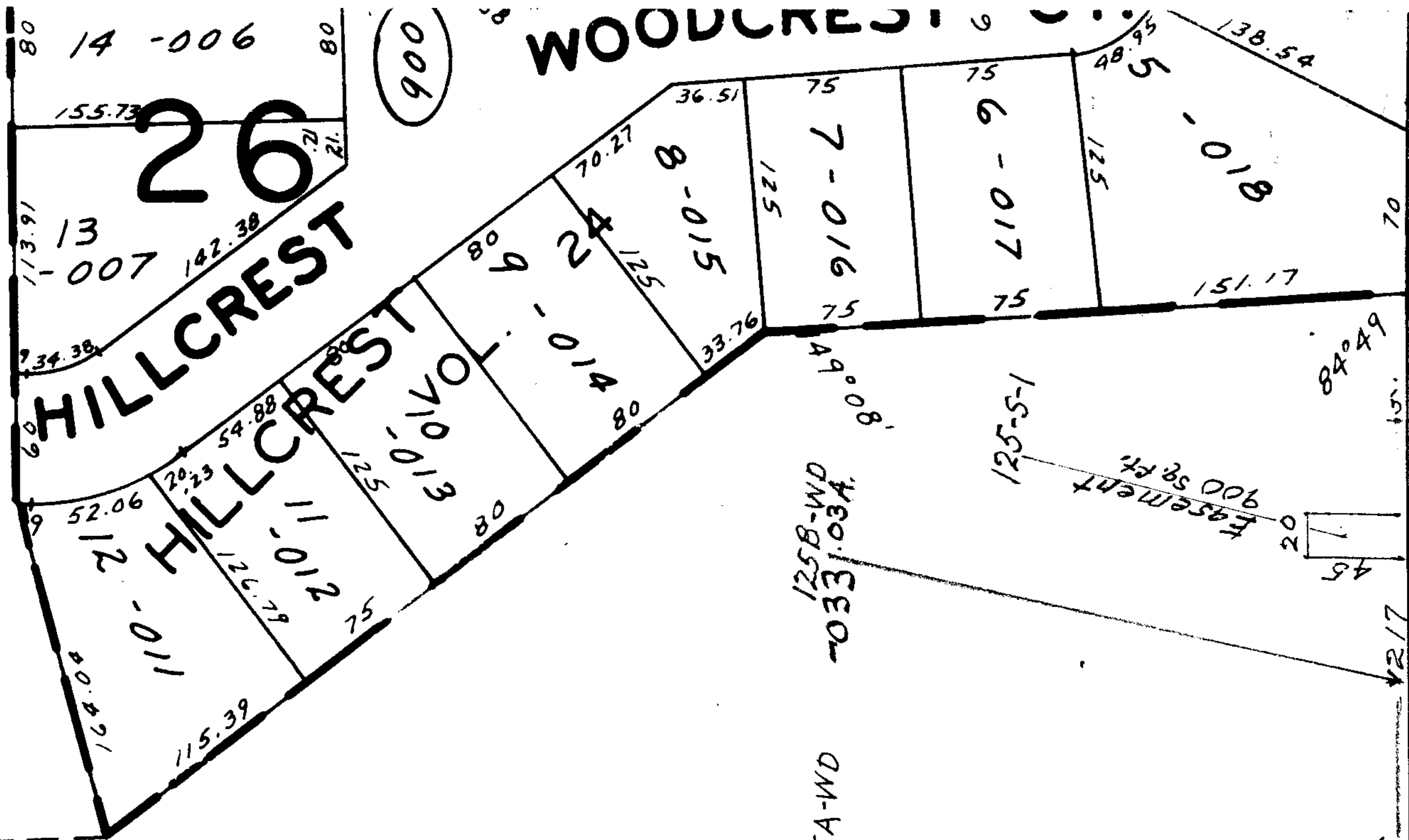


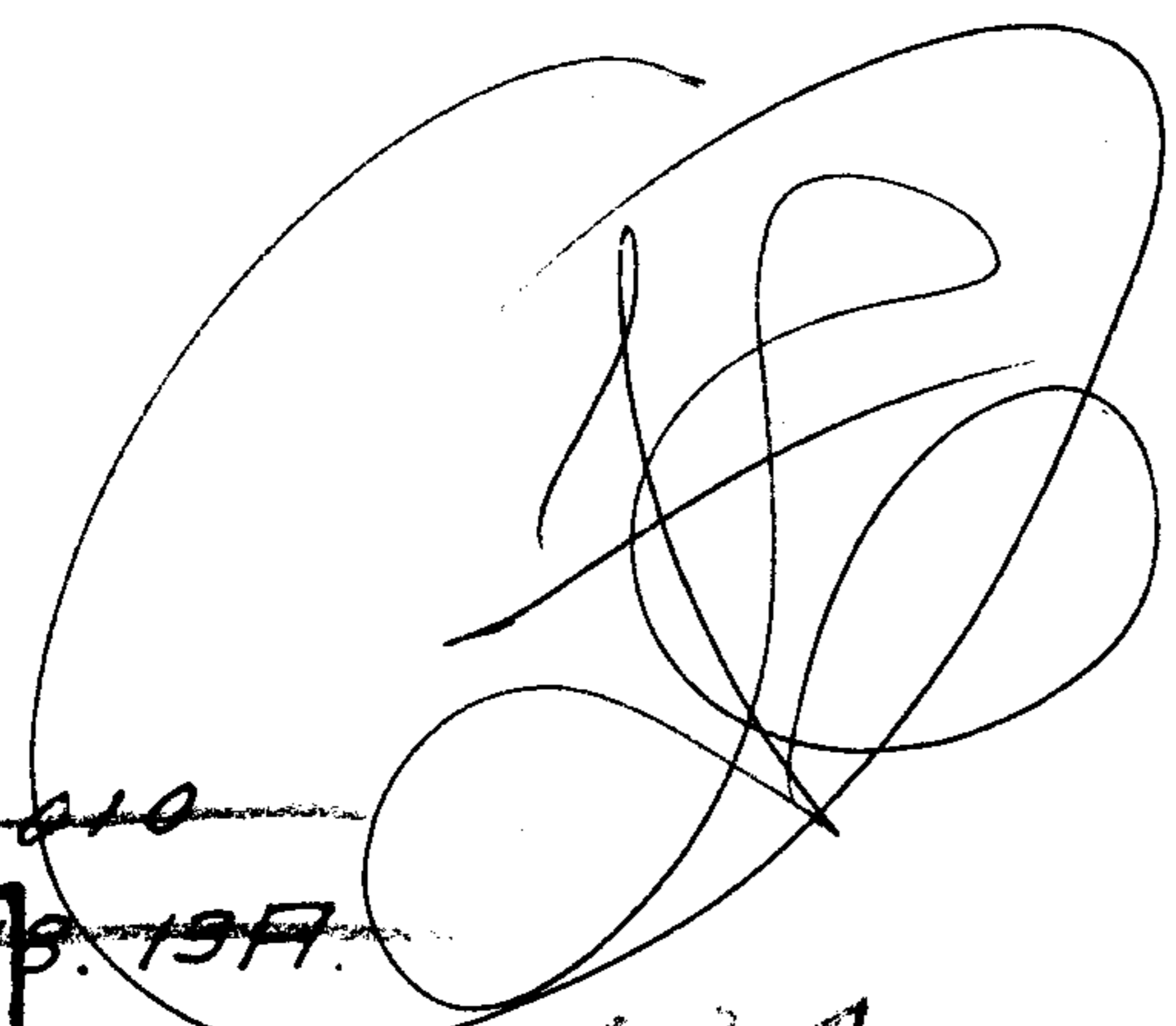
WOODCREST



900

26

MAR 26 1969



APPROVED  
 LORAIN CO.  
 MAP DEPT.  
 DATE 3/5/69  
 BY R. J. Kelling

17.96 A  
 3 Deeds  
 2 Sewer Ea.

2486

2485

2484

W. D. To Lorain County 839.33

SEE 6-35



029  
791A.

165.65  
5.20 57.30" W

798

287.55

1187.36

1102+00  
1102+78

1105+55  
1106+18.79

700 sq. ft. Easement

900 sq. ft. Easement

