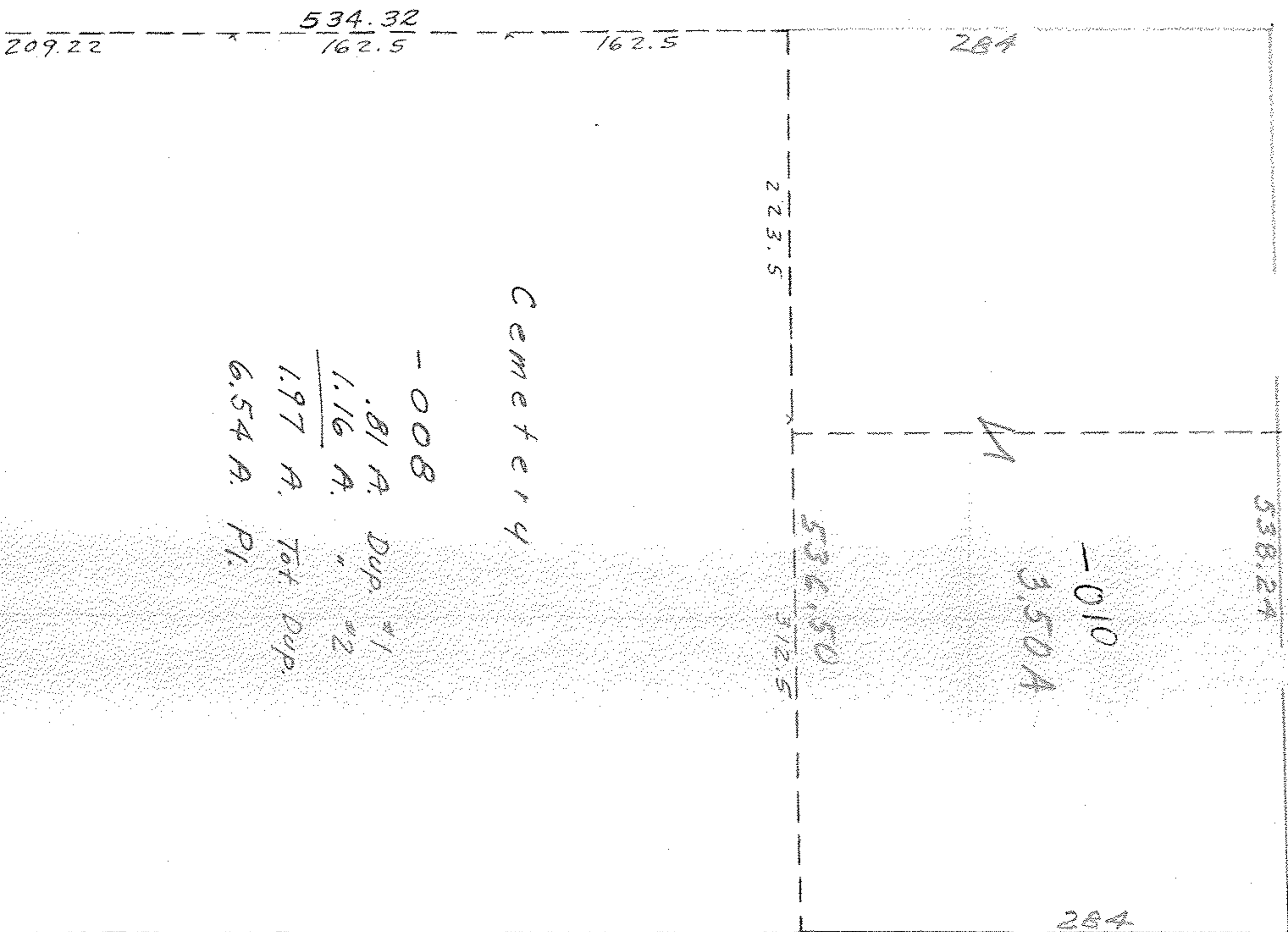


-008  
21.30A.

20 ft  
variable

KIPTON  
EAST



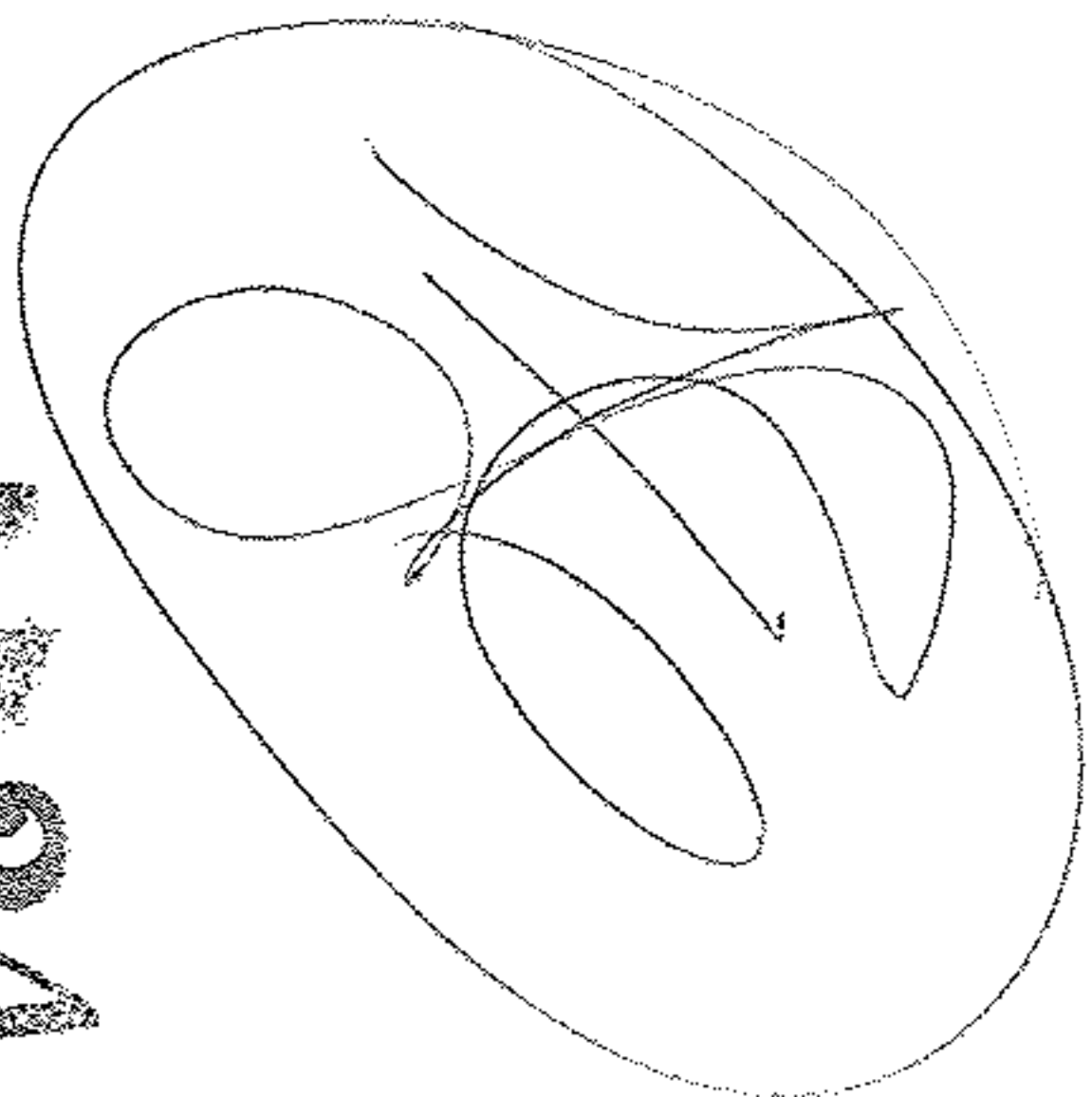
Cemetery

-008

.81 A.	Dup. #1
1.16 A.	" #2
1.97 A.	Tot Dup.
6.54 A.	Pl.

-011  
-007  
~~14.38A~~  
32.12A

-006  
2.13A.



2472

MAR 26 1969

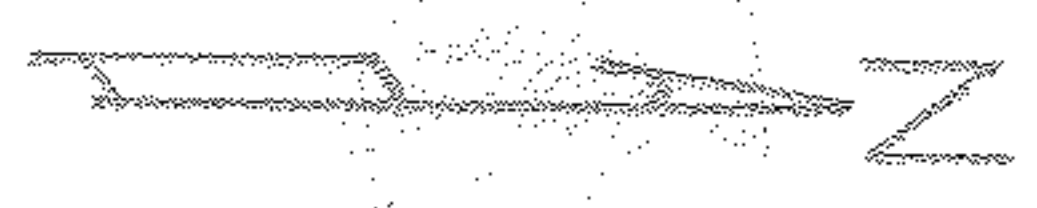
APPROVED  
LORAIN CO.  
MAP DEPT.

DATE 2/27/69  
BY R.J. Kelling

433.55  
RD.

120 ft  
variable

GIFFORD



SEE