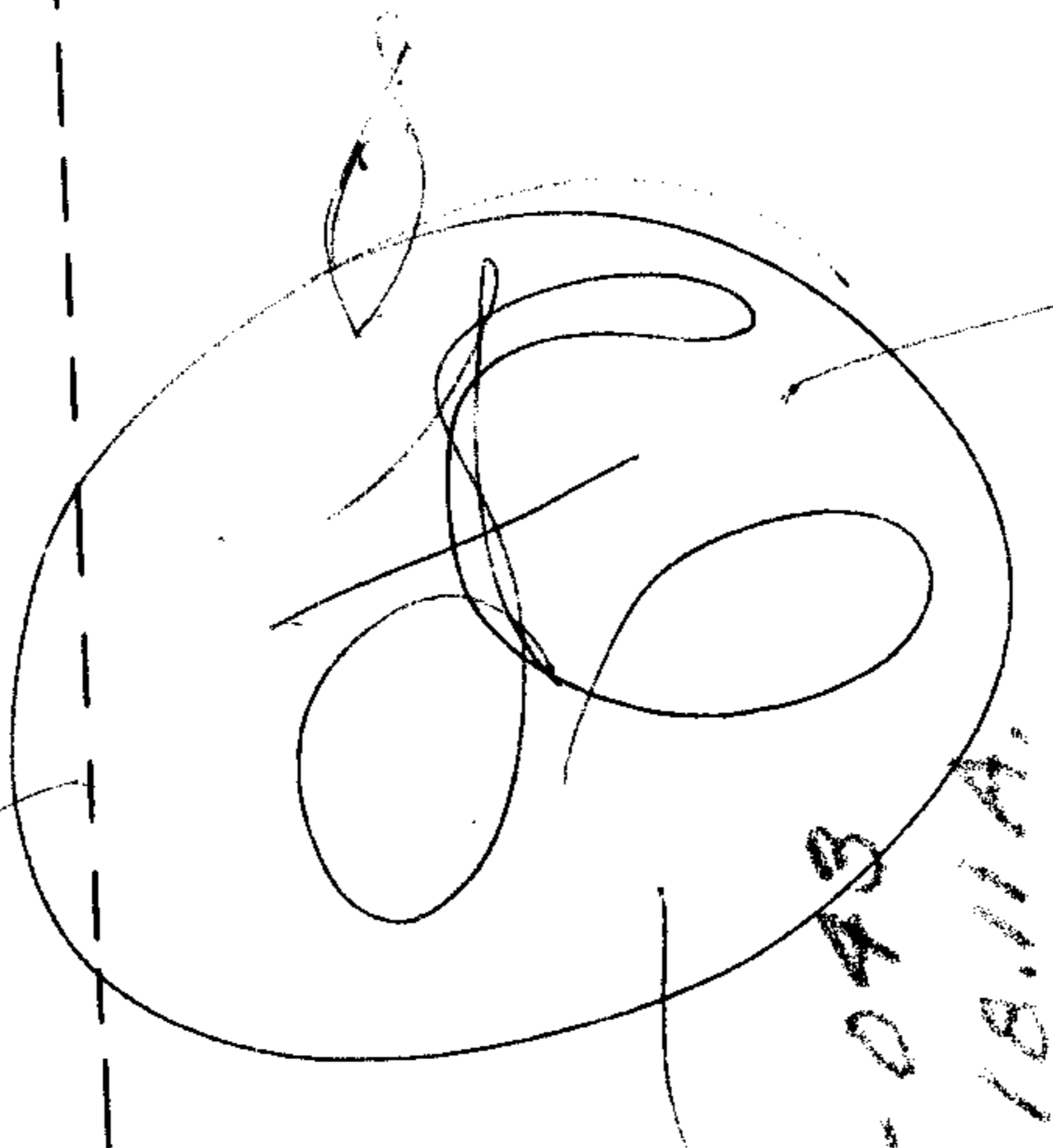


APR 5 1969

2455

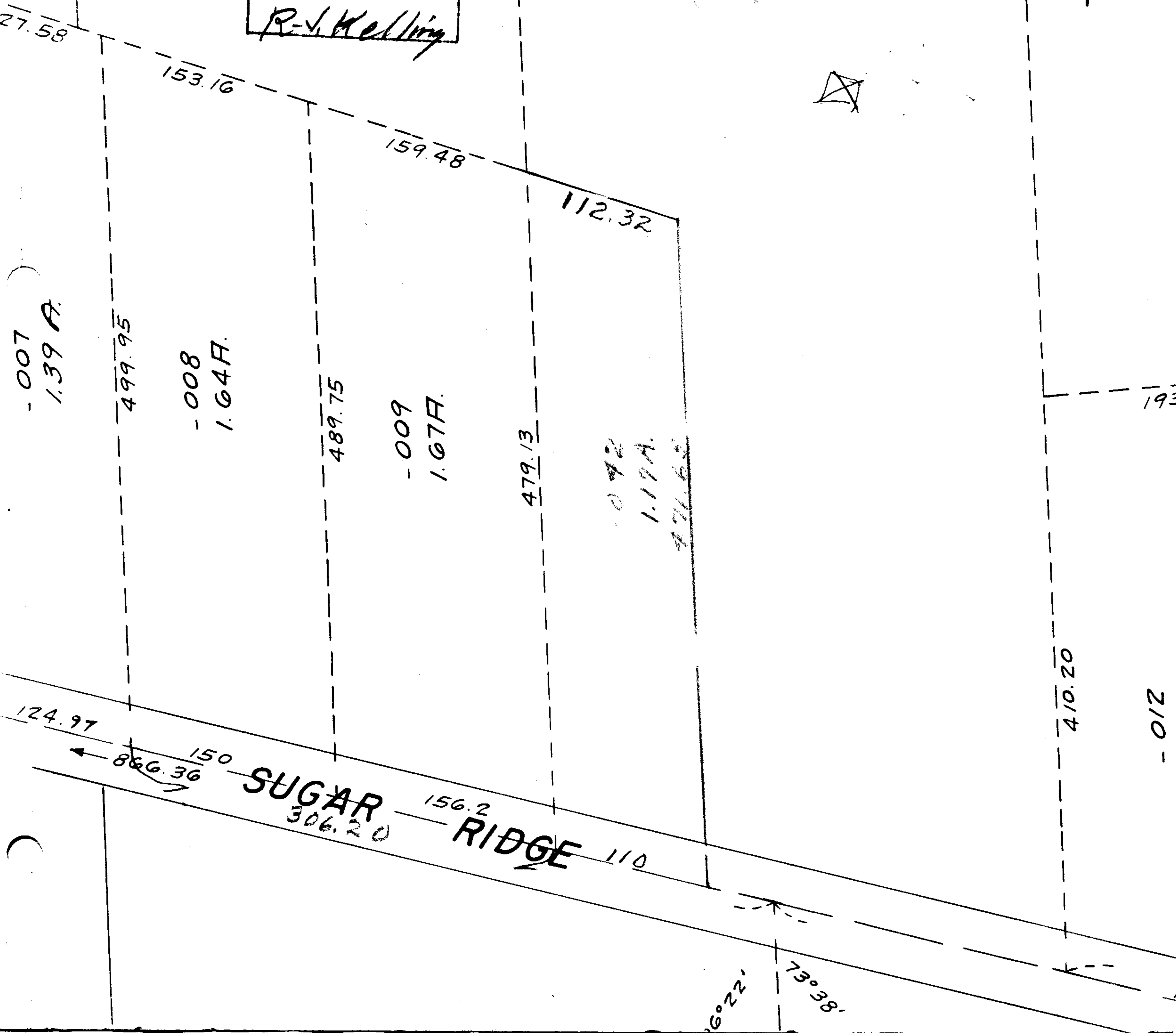
APPROVED  
 LORAIN CO.  
 MAP DEPT.  
 DATE 2/20/69  
 BY 6-126  
 R-V. Kelling



7



SEE 6-125



-007  
1.39 A.

-008  
1.64 A.

-009  
1.67 A.

SUGAR RIDGE  
306.20

6°22'

73°38'

-012