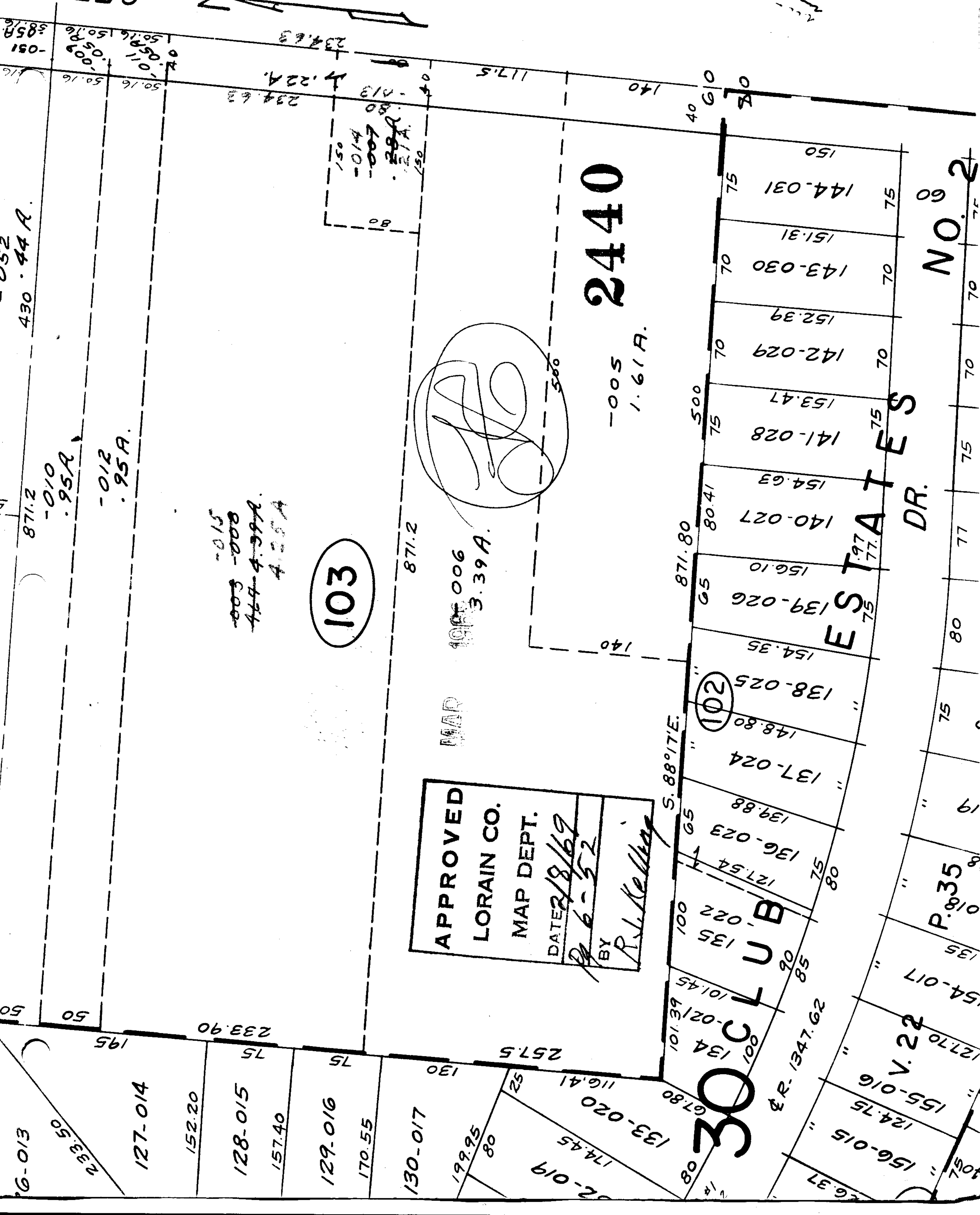
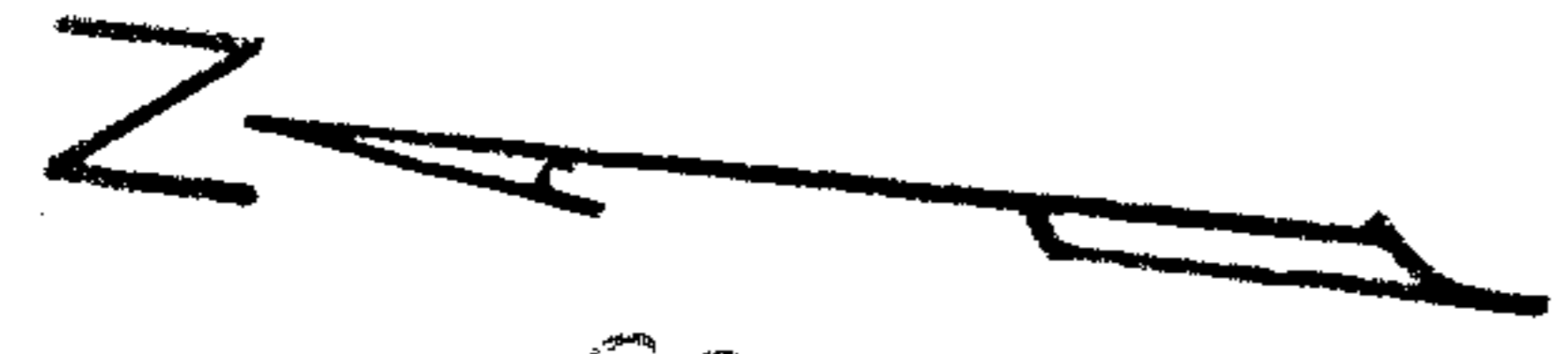


SEE 6-

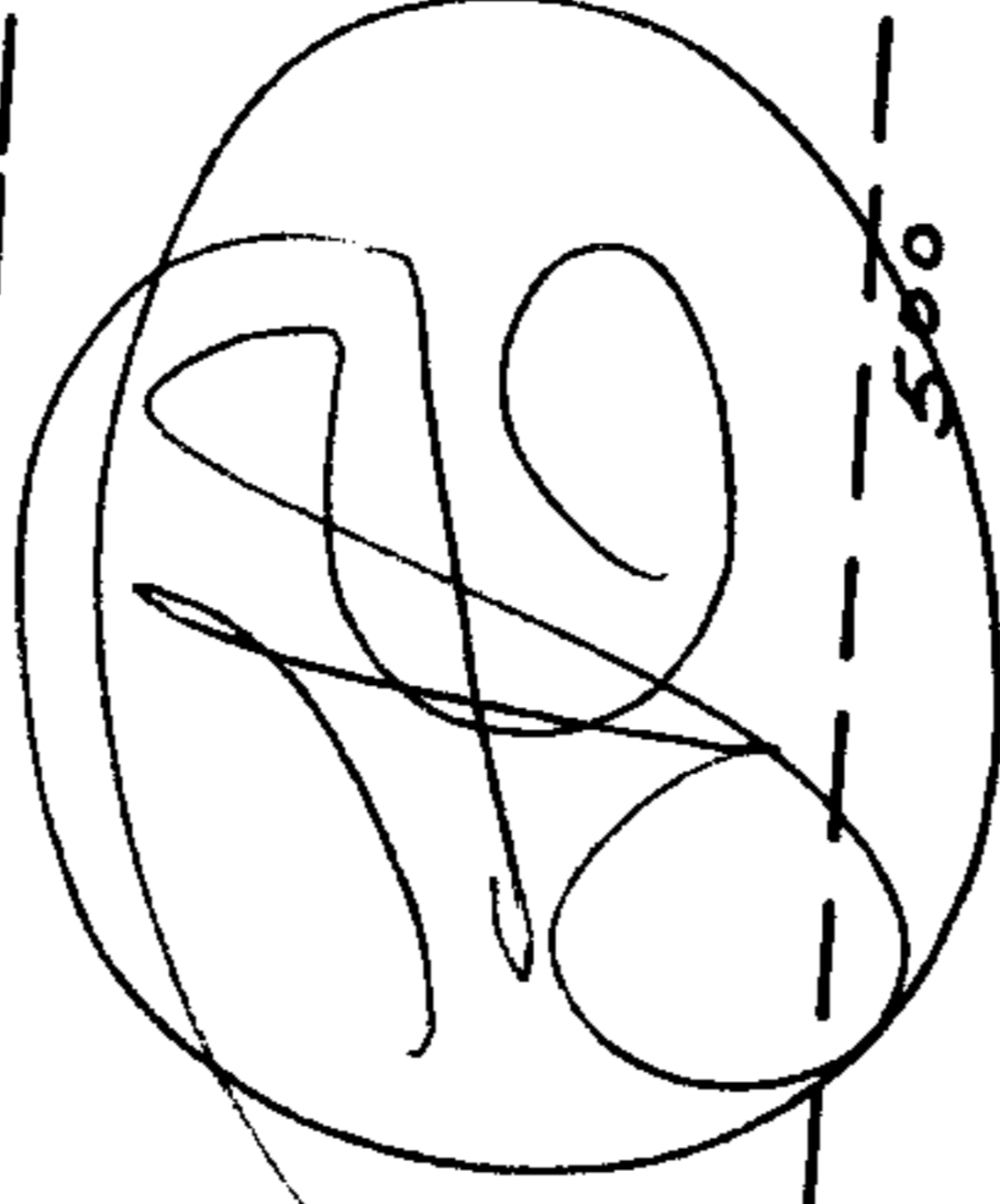


871.2
-010
.95A
-012
.95A

~~003 -008~~
~~464-4.99A~~
4.25A

103

APPROVED
LORAIN CO.
MAP DEPT.
DATE 2/8/69
BY R.L. Kelley



MAP 1965 006
3.39A

2440

-005
1.61A

30 CLUB

ESTATES
DR.

NO. 2

P. 35