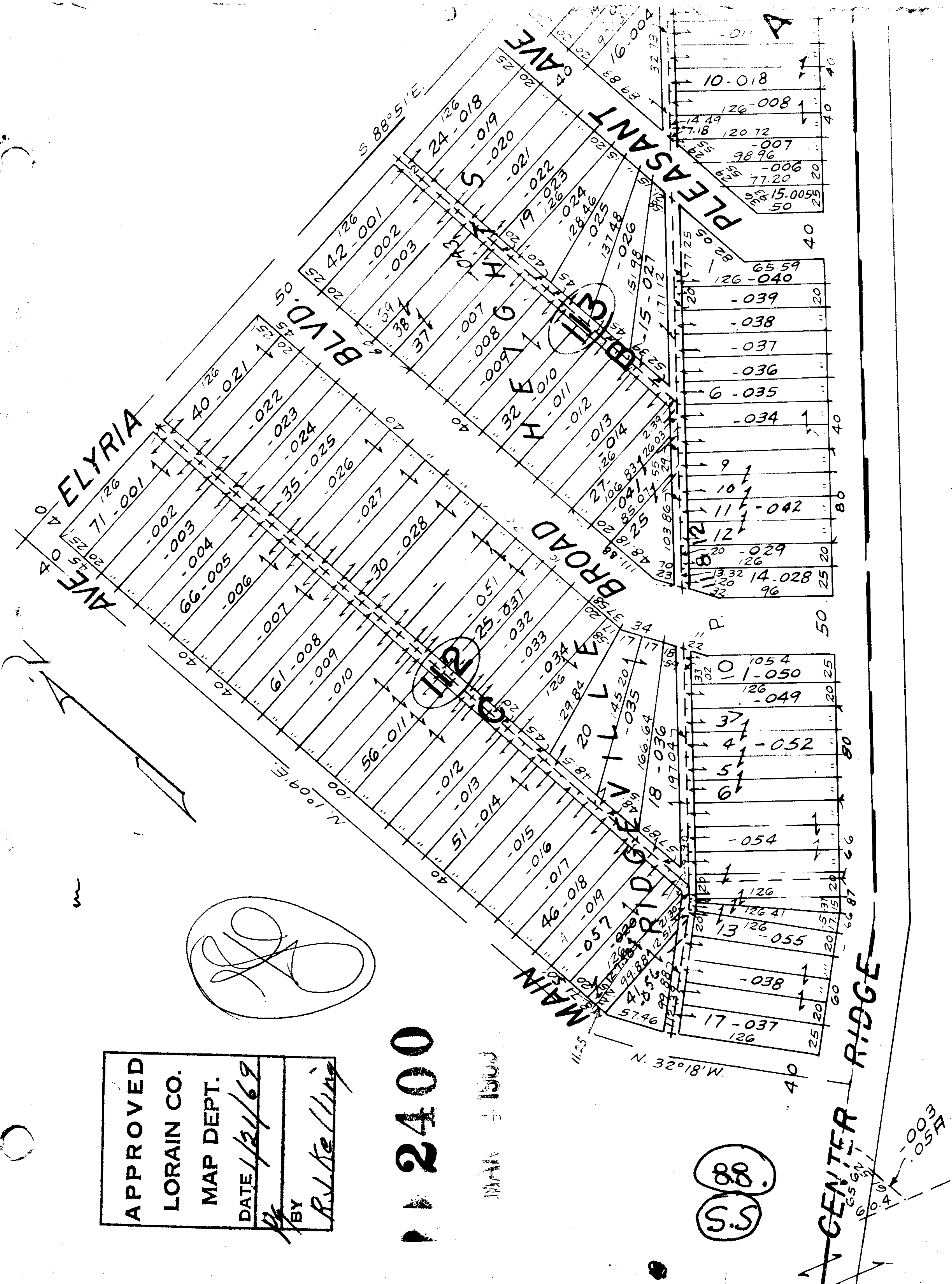


APPROVED
 LORAIN CO.
 MAP DEPT.
 DATE 1/21/69
 BY *R. K. Telting*

2400

MAN 1500

(S.S.)
 (88)



CENTER RIDGE

MAIN AVE

BROAD AVE

PLEASANT AVE

ELYRIA AVE

BLVD. 018

A

40

40

40

20

20

40

20

20

40

40

80

20

25

25

50

20

20

80

66

66

66

66

66

66

66

66

66

66

66

66