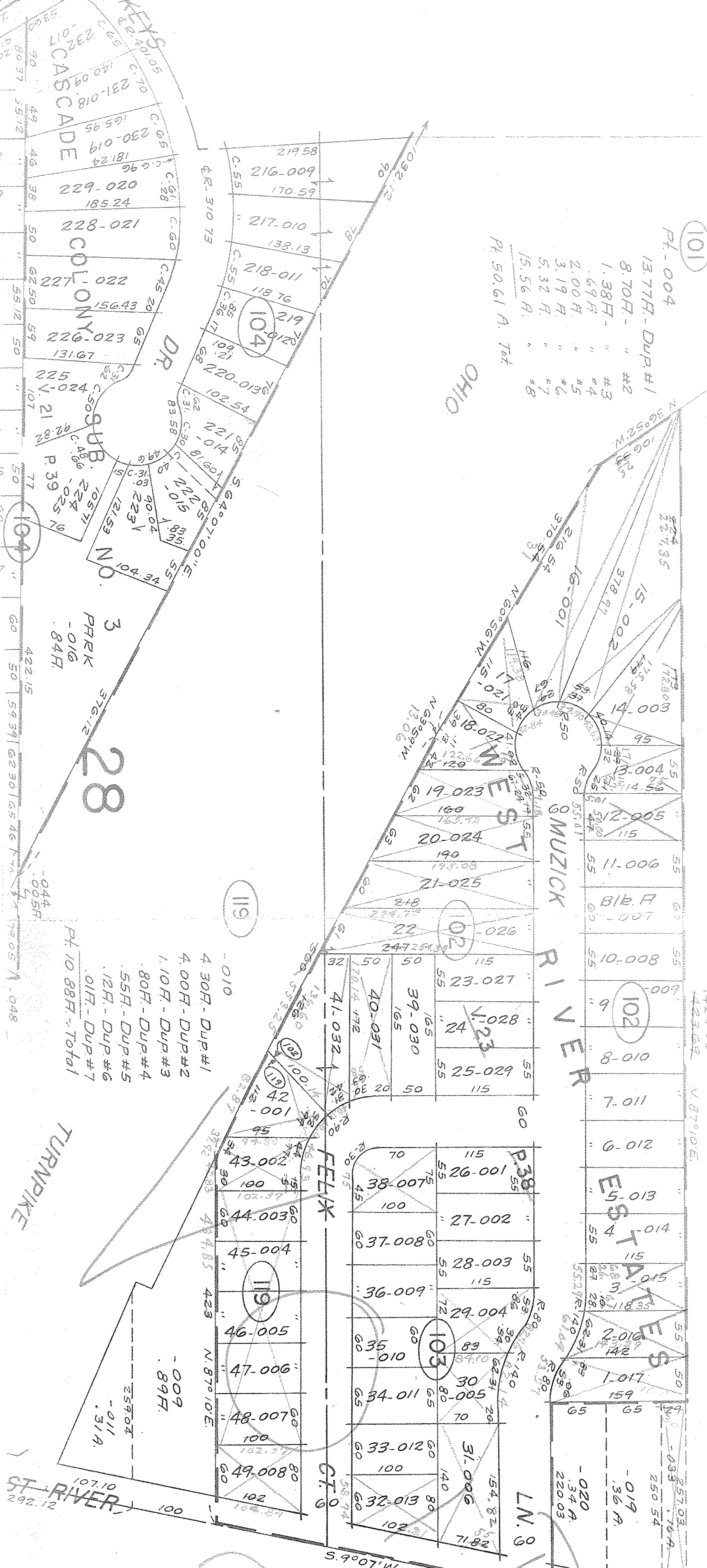


101

Pt. 004
 13.77H - Dup #1
 8.70H - " #2
 1.38H - " #3
 .69H - " #4
 2.00H - " #5
 3.19H - " #6
 5.32H - " #7
 15.56H - " #8
 Pt. 50.61 A. Tot



4.30H - Dup #1
 4.00H - Dup #2
 1.10H - Dup #3
 .80H - Dup #4
 .55H - Dup #5
 .12H - Dup #6
 .01H - Dup #7
 Pt. 10.88H - Total

4.30H - Dup #1
 4.00H - Dup #2
 1.10H - Dup #3
 .80H - Dup #4
 .55H - Dup #5
 .12H - Dup #6
 .01H - Dup #7
 Pt. 10.88H - Total

Replat of the
 # 238 &
 00-24-09
 00-26-05