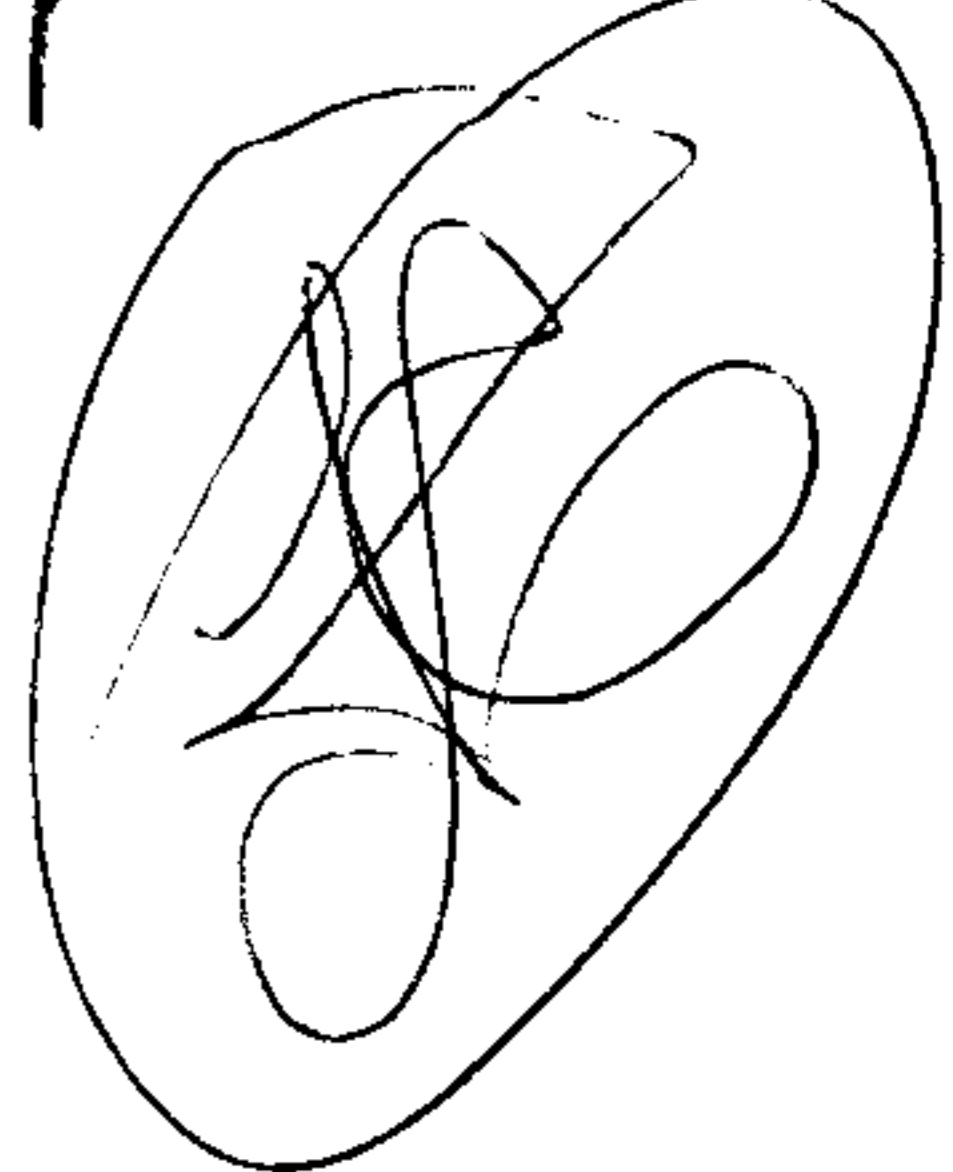
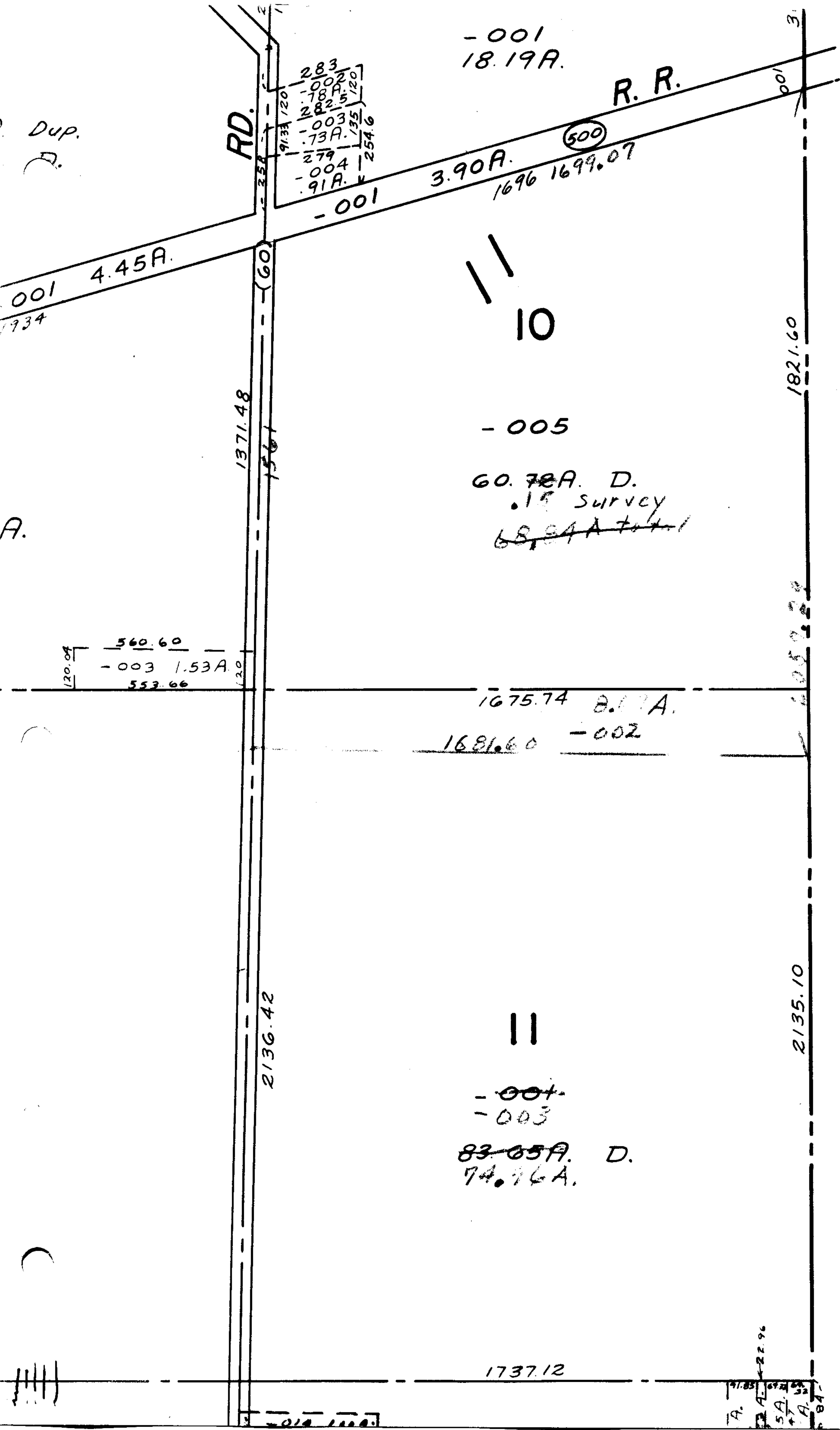


Dup.



2386

MAR 5 1969

APPROVED  
LORAIN CO.  
MAP DEPT.

DATE 1/15/69

By 13'D

R.J. Kelling

7-25-86 h.k.

-001  
18.19A.

R. R.

500

3.90A.

1696 1699.07

-001

4.45A.

10

-005

60.78A. D.  
.15 SURVEY  
~~68.84A. D.~~

560.60  
-003 1.53A.  
553.66

1675.74 8.17A.

1681.60 -002

11

-004  
-003

83.85A. D.  
74.76A.

1737.12