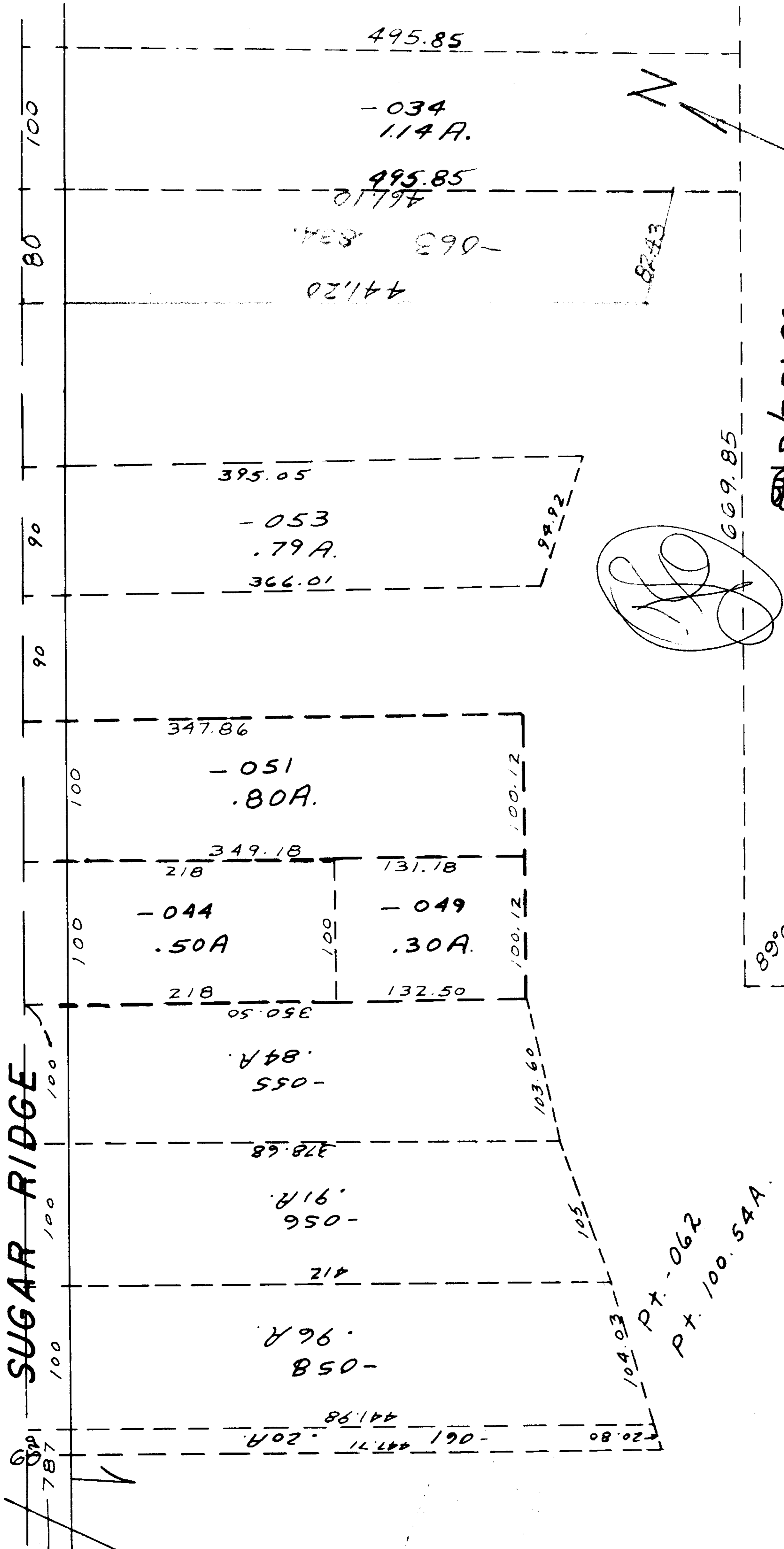


SEE 7-00-38-B



APR 7-31-86
APPROVED
LORAIN CO.
MAP DEPT.
 DATE 1/3/69
 BY R.J. Kelling

2370

JAN 20 1969

-064
99.91

104.03
PT. -062
PT. 100.54A.

89°00'

25'

82.43

103.60

105

669.85

100.12

100.12

100.12

100.12

100.12

100.12

495.85

-034
1.14 A.

495.85

461.10
-063
82.43

441.20

395.05

-053
.79 A.

366.01

347.86

-051
.80 A.

349.18

-044
.50 A.

218

350.50

-055
.84 A.

378.68

-056
.91 A.

412

-058
.96 A.

441.98

-061
447.71
.20 A.

100

80

90

90

100

100

100

100

100

787

0.00