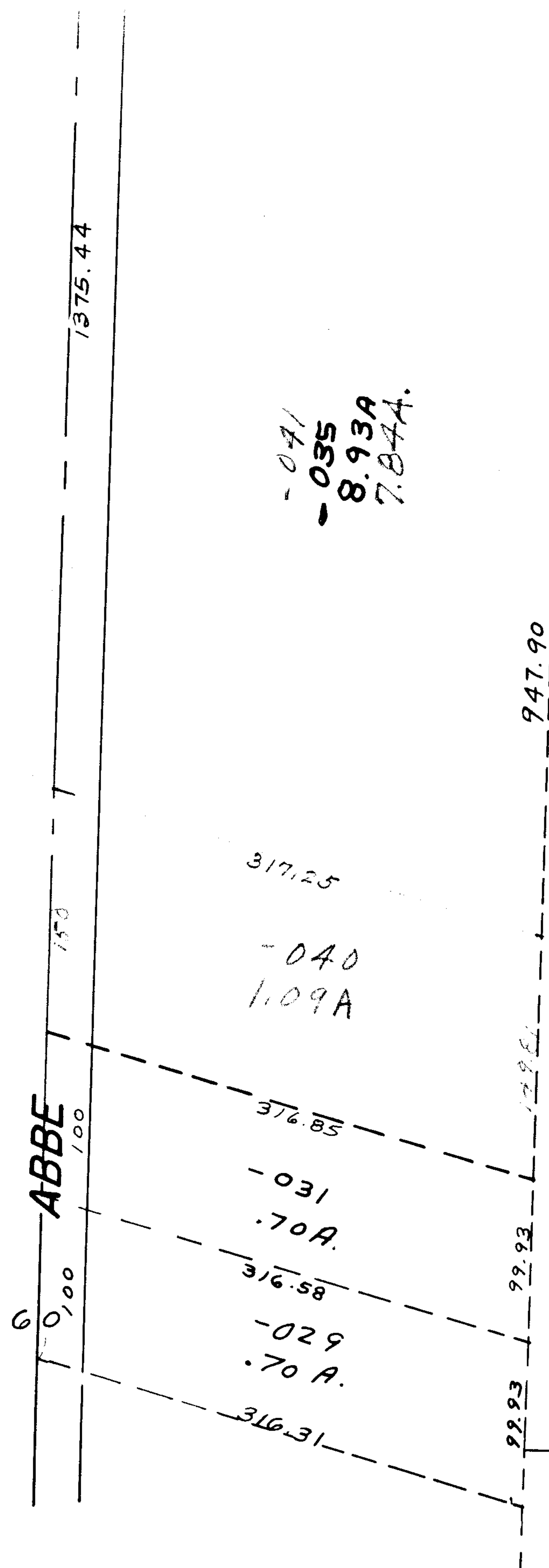
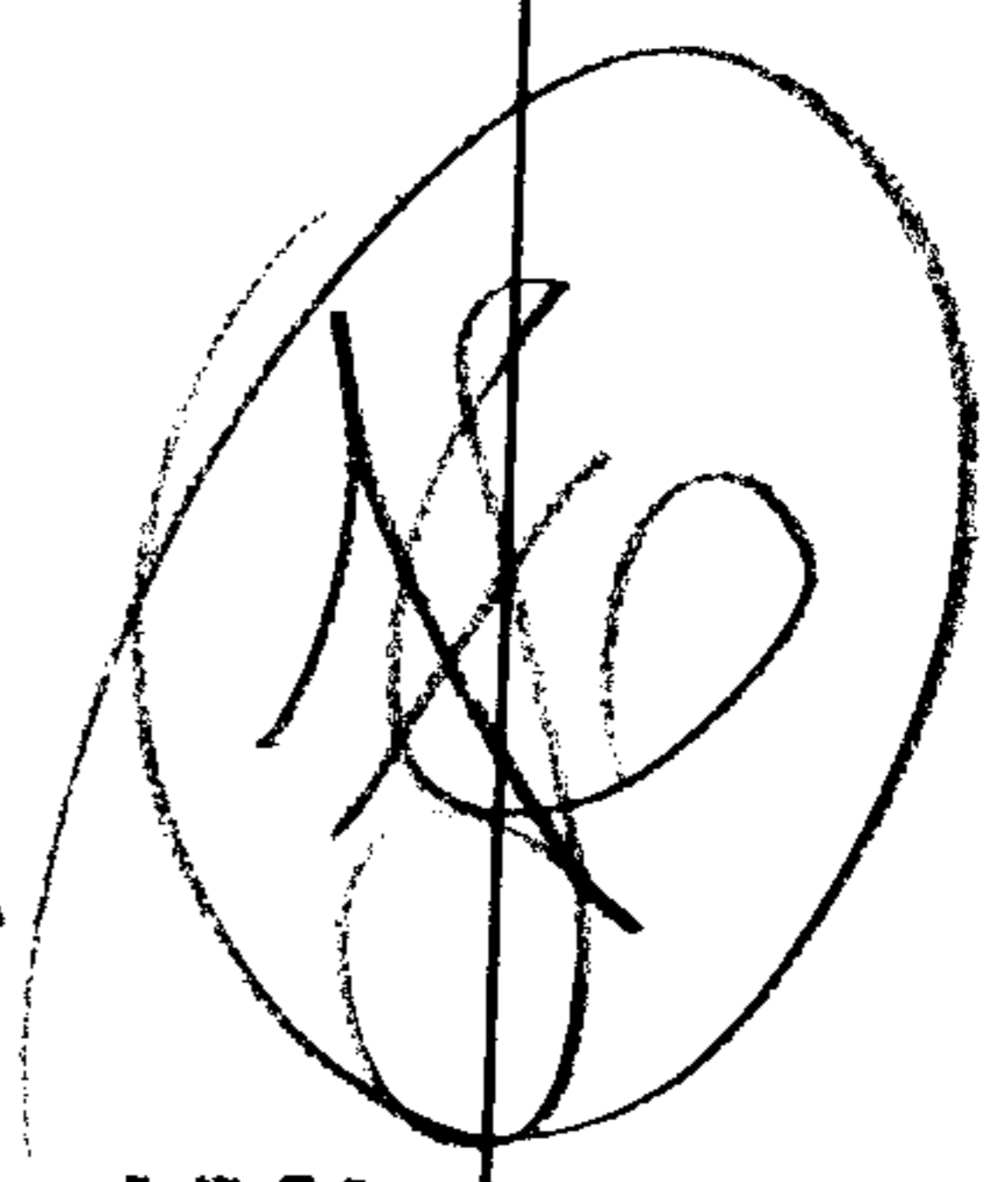


57

KENNEDY



Pt. - 016  
Pt. 13.32A.



JAN 20 1969

APPROVED  
LORAIN CO.  
MAP DEPT.  
DATE 12/28/68  
Pg 6-125  
BY  
R. J. Kelling

2354

SEE

# ELYRIA TWP.

SCALE: 1" = 100'