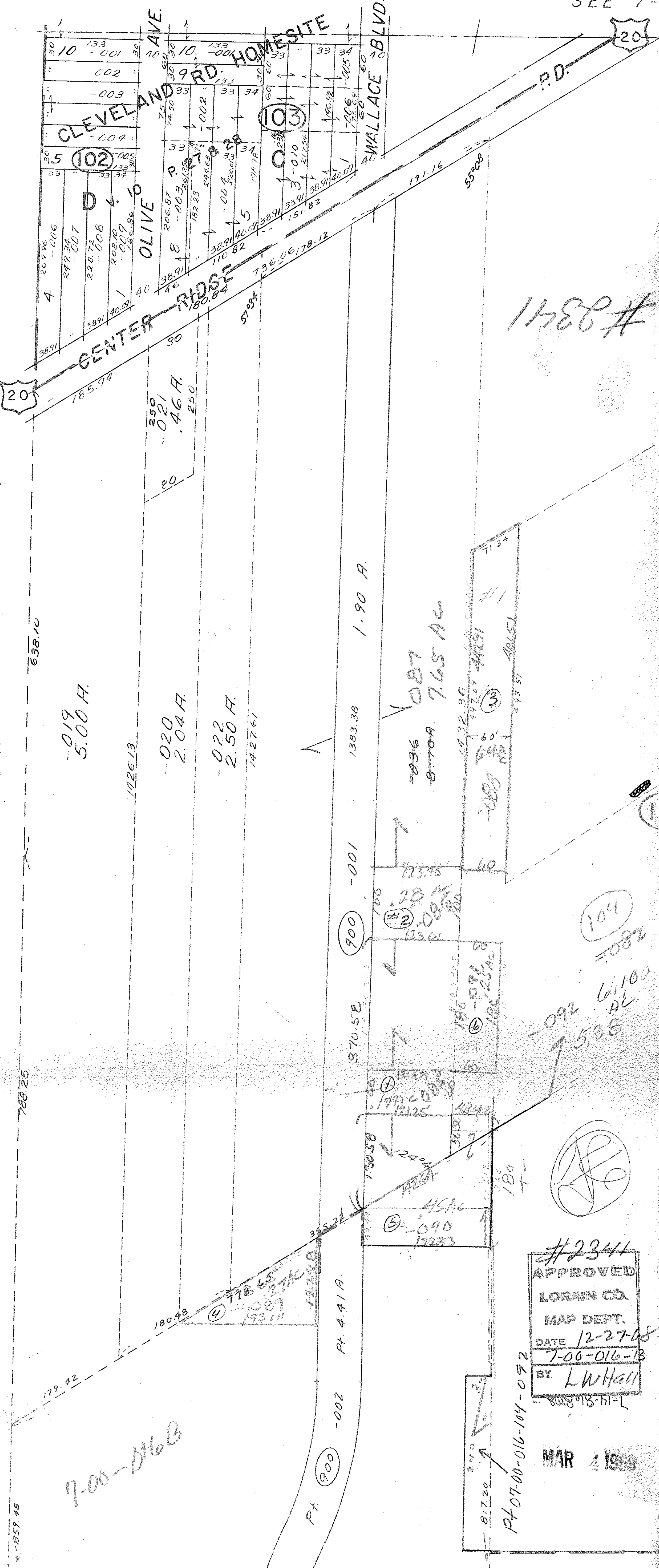


7-00-016 B

SEE 7-



20

20

019
5.00 A.

020
2.04 A.

022
2.50 A.

1.90 A.

087
7.65 AC

096
8.70 A.

091
6.10 AC

092
5.38 AC

090
4.5 AC

091
6.10 AC

092
5.38 AC

096
8.70 A.

087
7.65 AC

7-00-016 B

1180 #

#2341
 APPROVED
 LORAIN CO.
 MAP DEPT.
 DATE 12-27-68
 7-00-016-B
 BY LW Hall
 1-14-69

MAR 4 1969

SEE 7-00-016-D

#2341