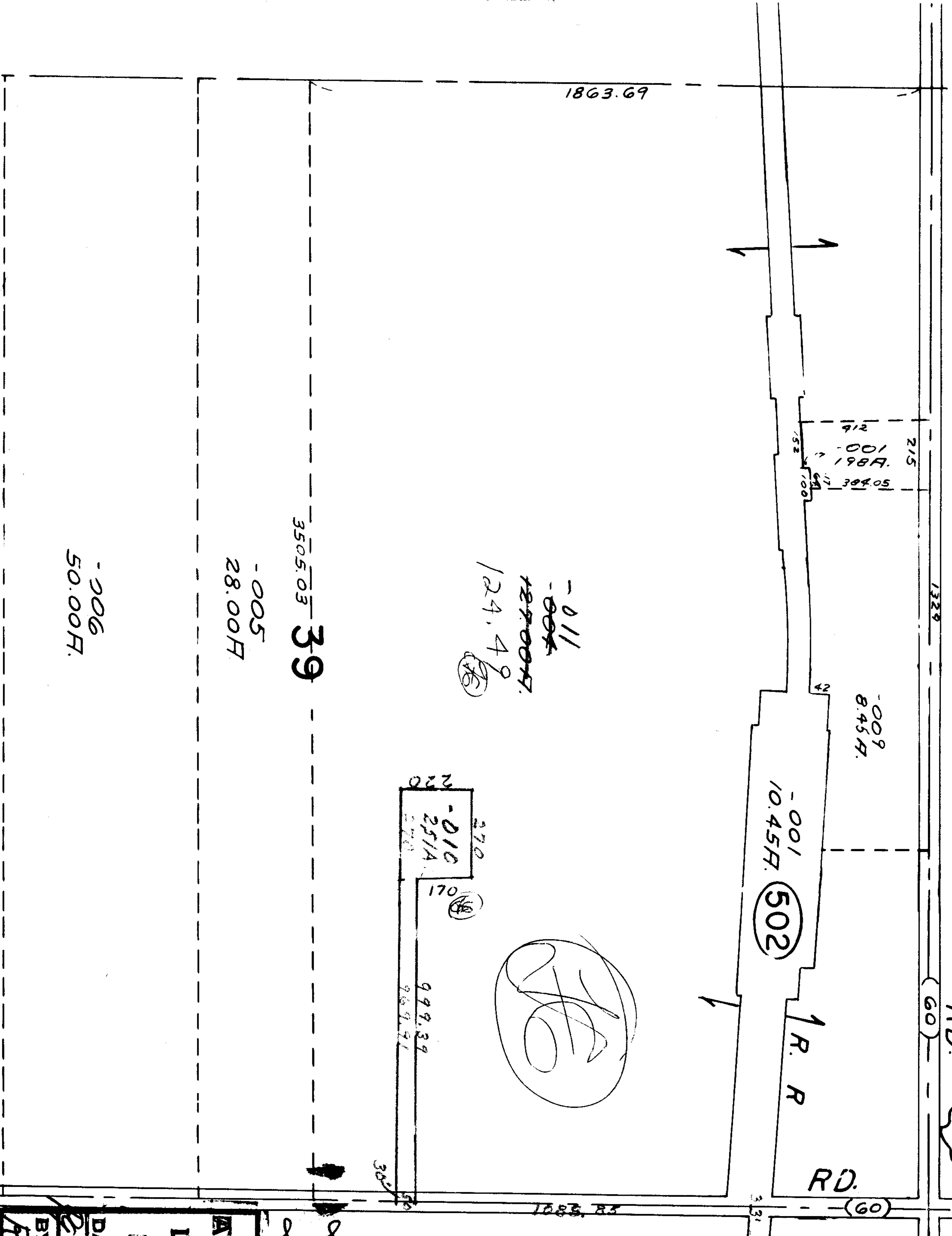


RD. 18



1863.69

1329

(60)

215
-001 198A
50405
912
152
100

-009
8.45A

-001
10.45A
502

1 R. R

RD.

(60)

1083.85

331

-011
~~-004~~
124.49
124.49
124.49

220
-010
251A
270

170

999.39
969.91

367

3505.03 39

-005
28.00A

-006
50.00A

2299

APPROVED
LORAIN CO.
MAP DEPT.
DATE 12/18/68
BY R. L. Kelly

DEC 1 1968