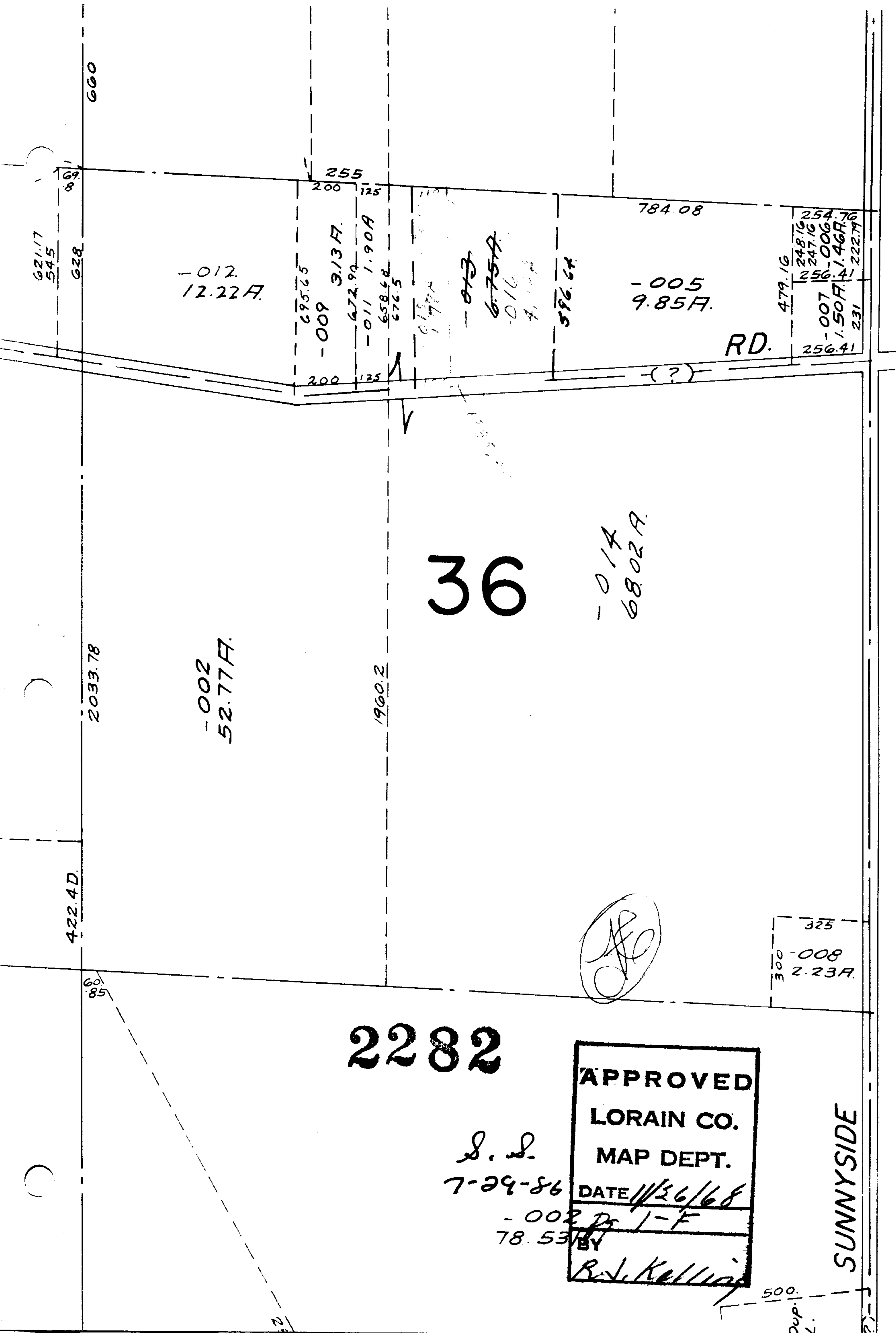


N



-002  
52.77A.

-014  
68.02A.

-005  
9.85A.

-012  
12.22A.

-009  
3.13A.

-011  
1.90A.

-013  
6.75A.

-007  
1.50A.

RD.

2282

APPROVED  
 LORAIN CO.  
 MAP DEPT.  
 DATE 11/26/68  
 -002 P. 1-F  
 78.53 BY  
 R. J. Kelling

SUNNYSIDE

500  
Dup.  
K.