

PARENT PARCEL: 06-25-016-108-042

CHILD PARCEL: 06-25-016-108-043 THRU -048

STARTING POINT: PARCEL #1: I.P. IN THE S.W. CORNER OF S\L 32

PARCEL #2: I.P. IN THE N.W. CORNER OF S\L 28

NO. 22753

OLD PARCEL

~~06-25-016-108-042~~
~~222.4 X 157.66~~



NEW PARCELS

06-25-016-108-043
43 X 157.65

06-25-016-108-044
43 X 157.65

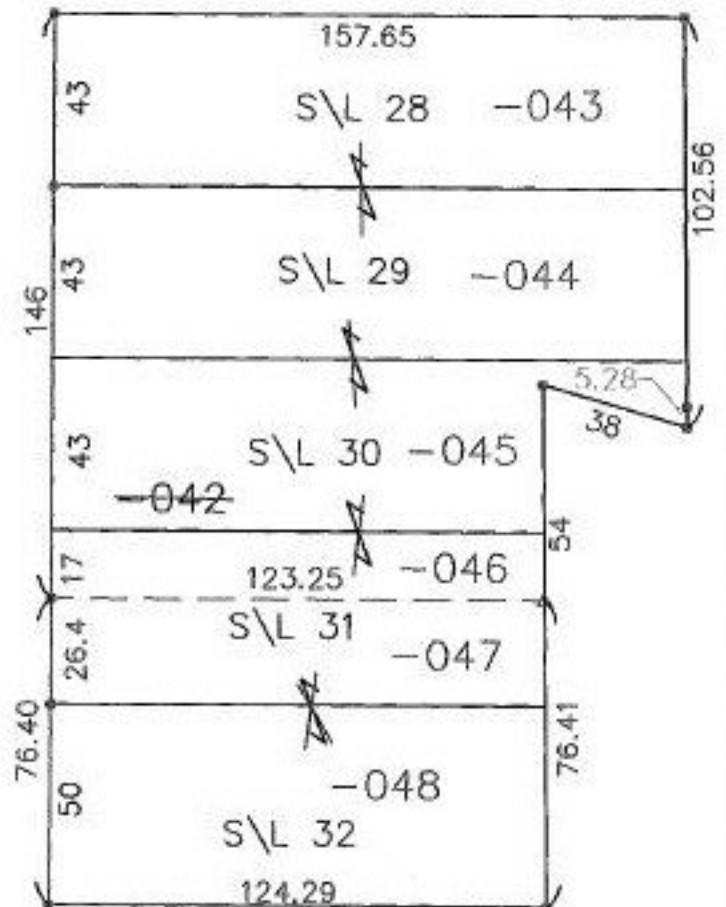
06-25-016-108-045
43 X 157.65 IRR.

06-25-016-108-046
17 X 123.25

06-25-016-108-047
26.4 X 123.25

06-25-016-108-048
50 X 124.29

PROSPECT ST. 66'



SPLITS/DEEDS PROCESSED

LORAIN COUNTY TAX MAP DEPARTMENT
226 MIDDLE AVE. ELYRIA, OHIO

SURVEYED BY: BRIAN P. McCARTNEY

CLOSURE: 0.19 : 10,000

MAP PAGE(S): 6-123

APPROVED BY: TJS DATE: 01/25/99

SCALE: 1" = 50' PRIOR INSTRUMENT: OR 1384/735