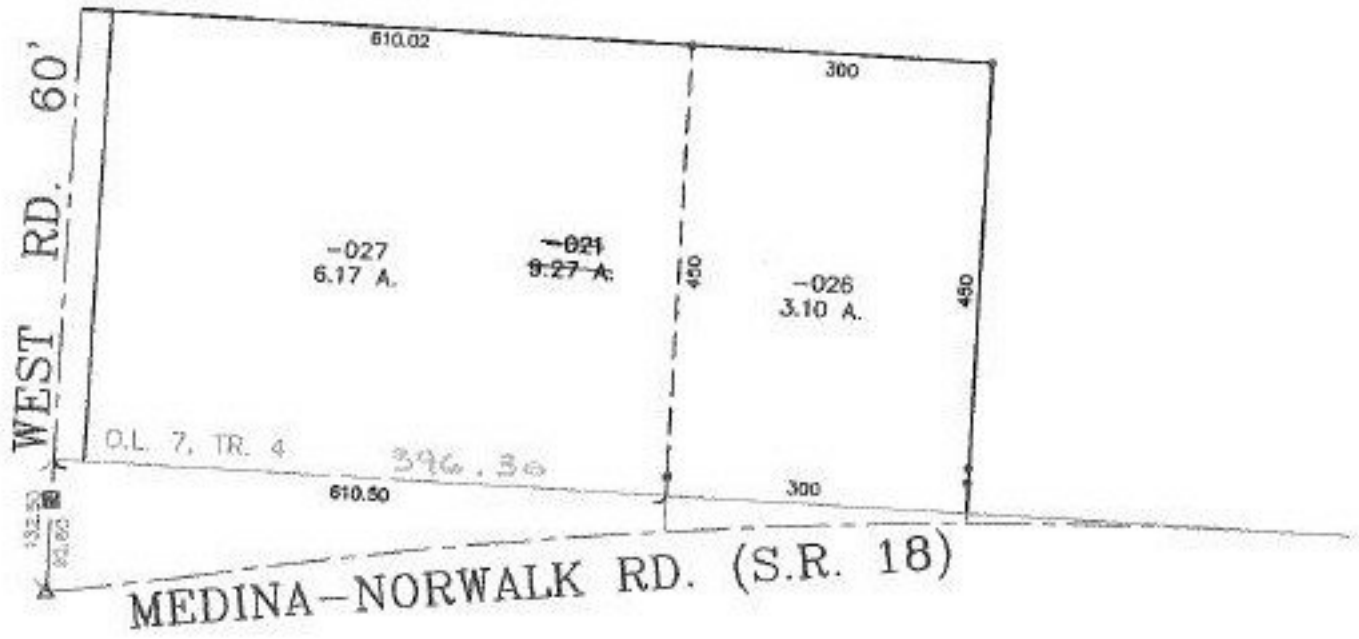


PARENT PARCEL: 19-04-007-000-021

CHILD PARCEL: 19-04-007-000-026 & -027

STARTING POINT: S.W. CORNER OF O.L. 7, TR. 4

NO. 22748



SPLITS/DEEDS PROCESSED
 LORAIN COUNTY TAX MAP DEPARTMENT
 226 MIDDLE AVE. ELYRIA, OHIO

SURVEYED BY: JAMES B. ROOT
 CLOSURE: 0.00 : 10.000
 MAP PAGE(S): 19-A
 APPROVED BY: TJS DATE: 01/18/99
 SCALE: 1" = 200' PRIOR INSTRUMENT: 980574526