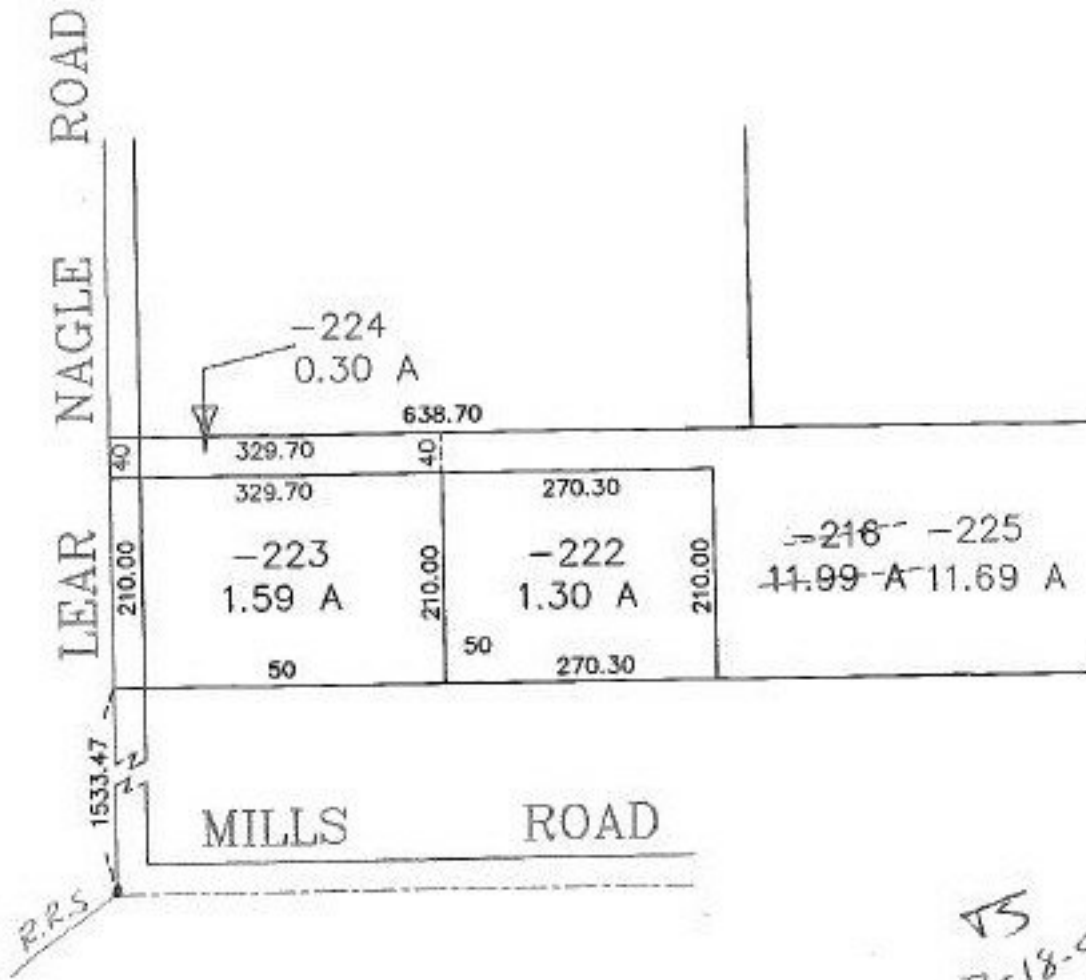


PARENT PARCEL: 04-00-025-000-216

CHILD PARCEL: 04-00-025-000-224, 225

STARTING POINT: RR SPIKE AT INTERSECTION OF C/L<sub>s</sub> MILLS & LEAR NAGLE ROADS

NO. 22734



VS  
2-18-99



**SPLITS/DEEDS PROCESSED**  
LORAIN COUNTY TAX MAP DEPARTMENT  
226 MIDDLE AVE. ELYRIA, OHIO

SURVEYED BY: JERIN J KAMINSKI  
 CLOSURE: 0.00 / 10.000  
 MAP PAGE(S): 4-00-025-E  
 APPROVED BY: F. COLBERT DATE: 12/16/98  
 SCALE: 1" = 200' PRIOR INSTRUMENT: OR1016/376