

PARENT PARCEL: 03-00-041-101-016 & -017

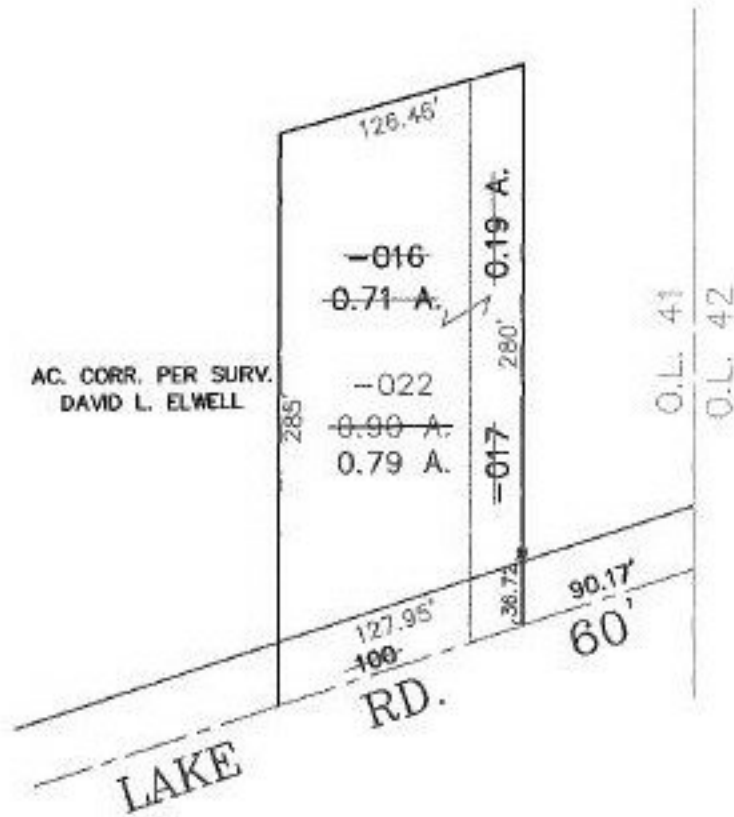
CHILD PARCEL: 03-00-041-101-022

STARTING POINT: CL OF LAKE RD. & IT'S INTERSECTION WITH THE EAST LINE OF O.L. 41

NO. 22722



# COMBINATION



## SPLITS/DEEDS PROCESSED

LORAIN COUNTY TAX MAP DEPARTMENT  
226 MIDDLE AVE. ELYRIA, OHIO

SURVEYED BY: DAVID L. ELWELL

CLOSURE: 0.07 : 10.000

MAP PAGE(S): 03-00-041

APPROVED BY: TJS DATE: 12/10/98

SCALE: 1" = 100' PRIOR INSTRUMENT: OR 126/541