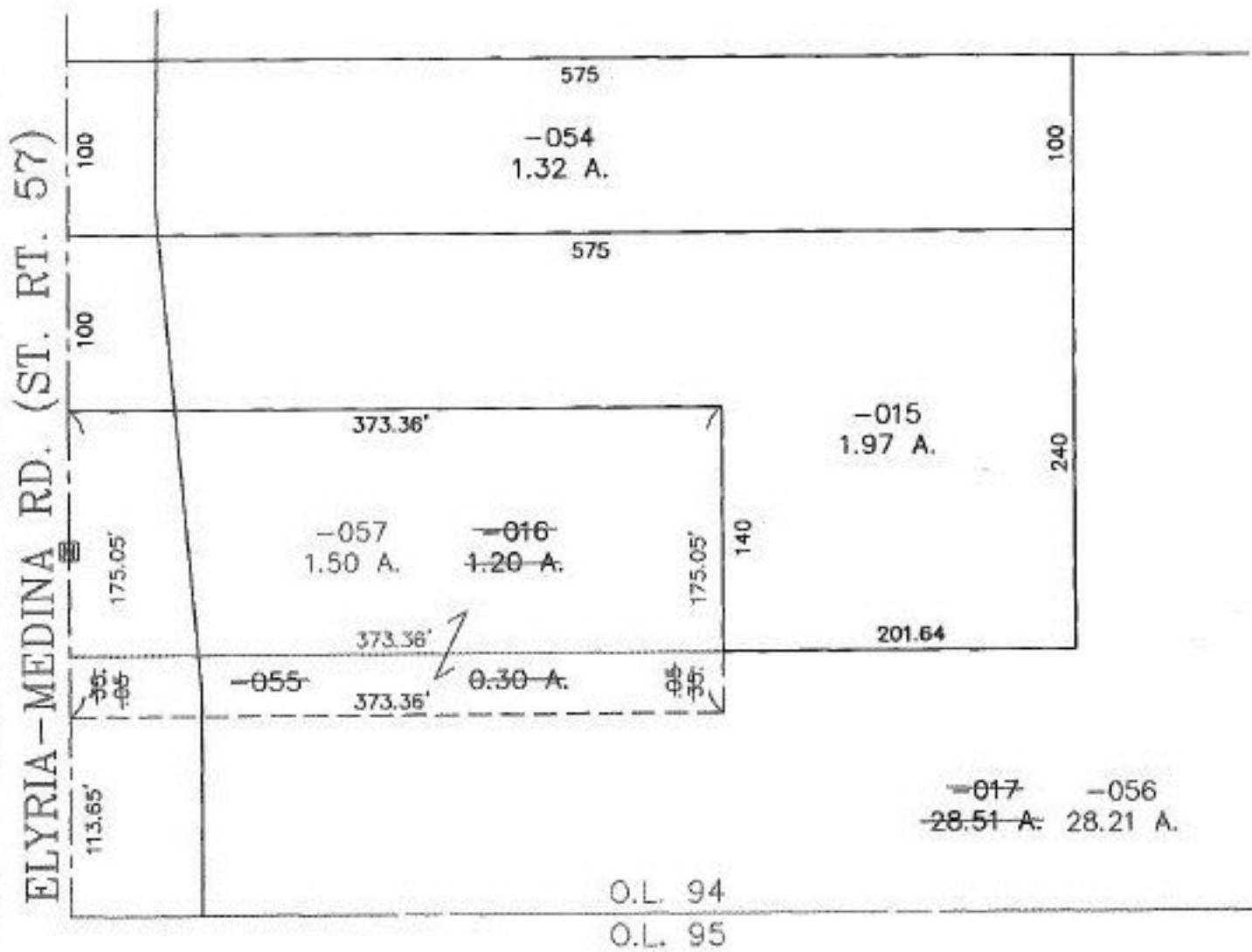


PARENT PARCEL: 11-00-094-000-017 & -016

CHILD PARCEL: 11-00-094-000-055 THRU -057

STARTING POINT: BEGINNING AT A POINT IN THE CL. OF ST. RT. 57 AT IT'S INTERSECTION WITH THE SOUTH LINE OF O.L. 94

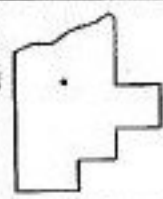
NO. 22714



ELYRIA-MEDINA RD. (ST. RT. 57)

O.L. 94  
O.L. 95

6-21-99  
m.s.



**SPLITS/DEEDS PROCESSED**  
LORAIN COUNTY TAX MAP DEPARTMENT  
226 MIDDLE AVE. ELYRIA, OHIO

SURVEYED BY: RODGER G. SIMON  
CLOSURE: 0.00 : 10.000  
MAP PAGE(S): 11-00-094-A, 11-00-094-B  
APPROVED BY: T. SPILLMAN DATE: 12/03/98  
SCALE: 1" = 100' PRIOR INSTRUMENT: DV 1252/239