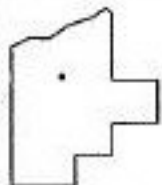
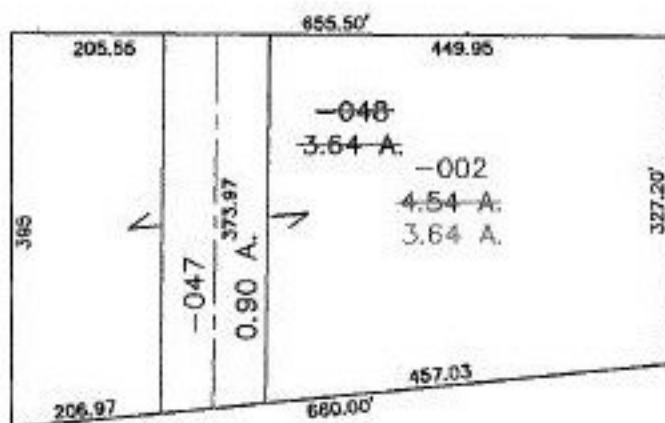


PARENT PARCEL: 02-01-003-262-002

CHILD PARCEL: 02-01-003-262-047, & -048

STARTING POINT: STONE MON. AT N.E. CORNER OF LOT NO. 33 &  
SOUTH LINE OF PENFIELD HIGHLANDS

NO. 22708-X



**SPLITS/DEEDS PROCESSED**  
LORAIN COUNTY TAX MAP DEPARTMENT  
226 MIDDLE AVE. ELYRIA, OHIO

SURVEYED BY: LEWIS GOODALL  
CLOSURE:  
MAP PAGE(S): 02-01-003-K  
APPROVED BY: IJS DATE: 06/18/98  
SCALE: 1" = 200' PRIOR INSTRUMENT: P.V. 22/66