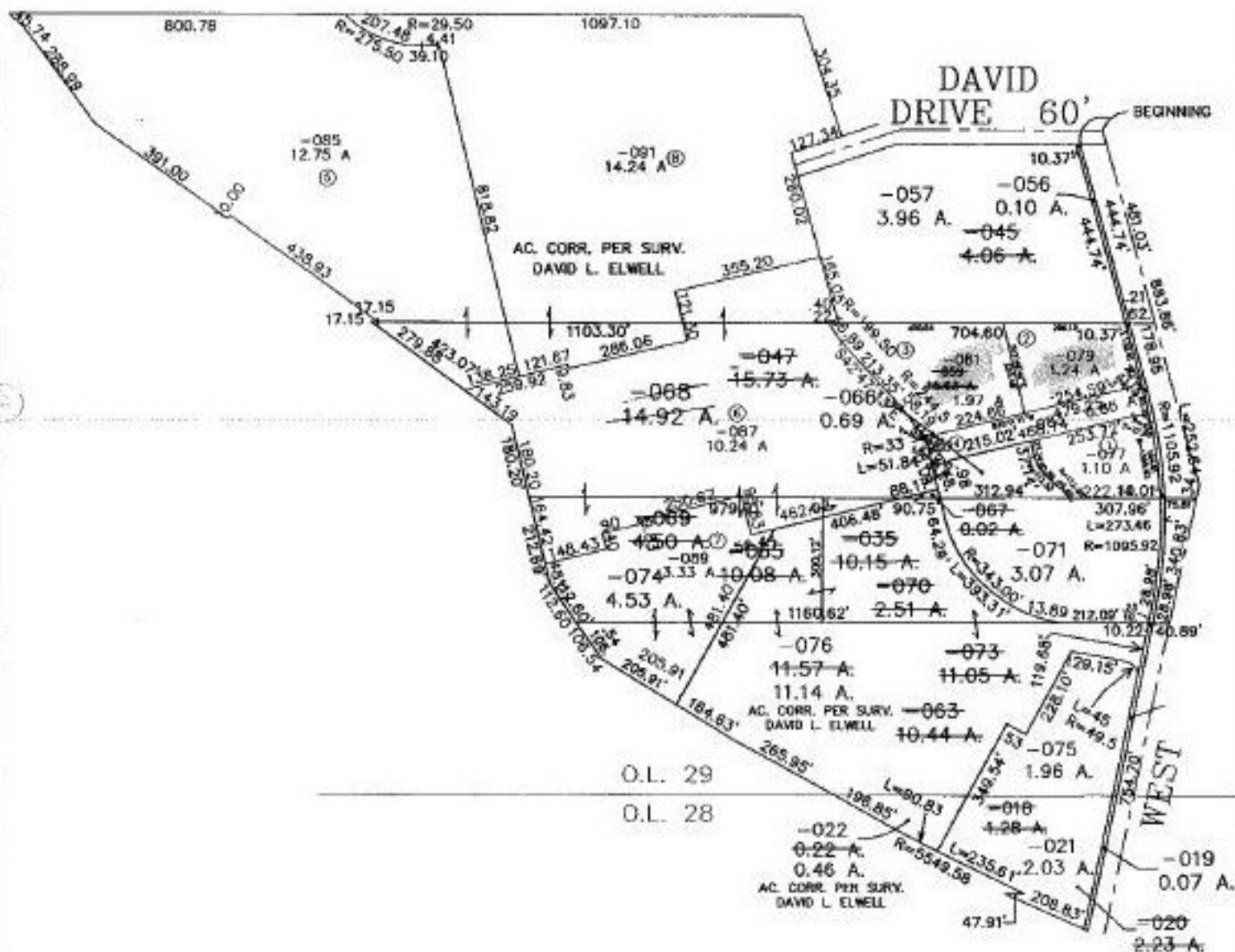
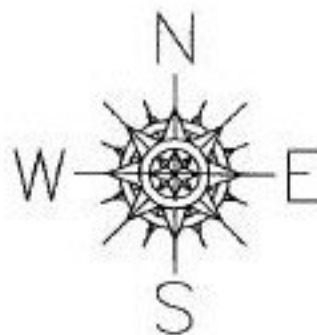


PARENT PARCEL: 06-24-029-009-068, 054, 074, 033, 019

CHILD PARCEL: 06-24-029-009-077, 079, 081, 083, 085, 087, 089, 091

STARTING POINT: C/Ls WEST RIVER ROAD & DAVID DRIVE

NO. 22704



SPLITS/DEEDS PROCESSED

LORAIN COUNTY TAX MAP DEPARTMENT
226 MIDDLE AVE. ELYRIA, OHIO

SURVEYED BY: DAVID L. ELWELL

CLOSURE: XXXXXX

MAP PAGE(S): 6-64 & 6-65

APPROVED BY: F. COLBERT DATE: 12/17/98

SCALE: 1" = 400' PRIOR INSTRUMENT: DV XXXX/XXX