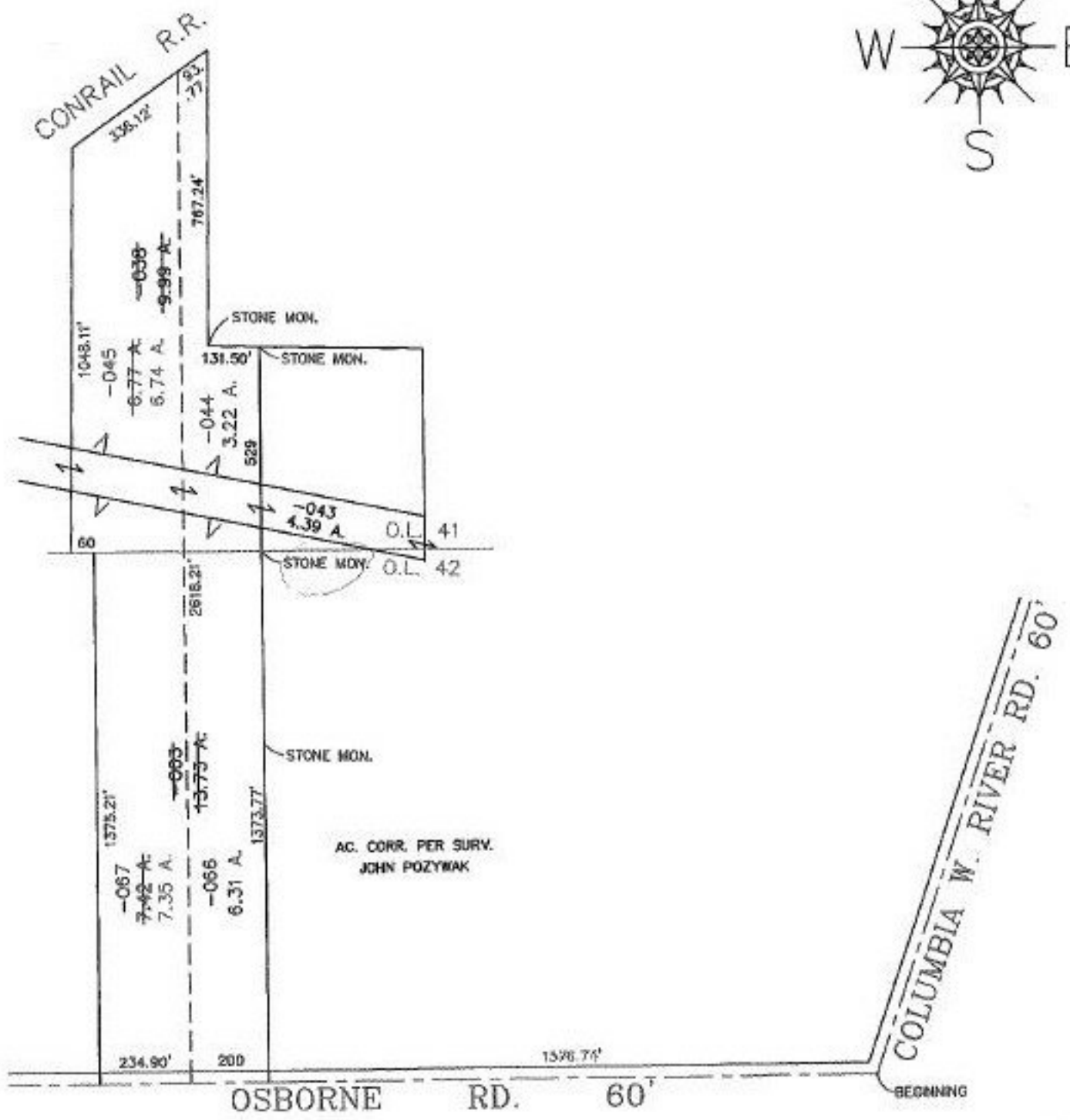
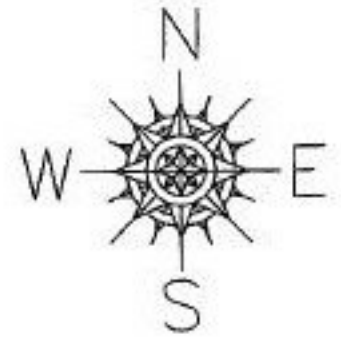


PARENT PARCEL: 12-00-041-000-038, & 12-00-042-000-003
 CHILD PARCEL: 12-00-041-000-044 & -045, 12-00-042-000-066 & -067
 STARTING POINT: CL OF OSBORNE RD. & CL OF COLUMBIA WEST RIVER RD.

NO. 22700



SPLITS/DEEDS PROCESSED
 LORAIN COUNTY TAX MAP DEPARTMENT
 226 MIDDLE AVE. ELYRIA, OHIO

SURVEYED BY: JOHN POZYWAK
 CLOSURE: 0.14 : 10.000
 MAP PAGE(S): 12-00-041-A & B, 12-00-042-A
 APPROVED BY: TJS DATE: 11/17/98
 SCALE: 1" = 400' PRIOR INSTRUMENT: 980531390